

Golf Car OPTIONS Magazine

Pg 12

Drive Voyager - An Adventure Like No Other



BEYOND

The Gated Community
What Golf Car-Type (GCT) Vehicles
Should Choose as a Consumer (or a
Dealer for that Matter)

Pg 28

DEALER Profile

Clear Creek Golf Car:
Arkansas, Missouri &
Oklahoma

Pg 54

FEATURE ARTICLE

The Future Of North
American Golf Cart and
LSV Manufacturers

Pg 34

around the marketplace

Golf Cart Products
To Enhance Your
Cart

Pg 36

INDUSTRY LEADING DEALER PROFITS

Join Bintelli's family of authorized dealers and capitalize on a premium brand with over 23 years of expertise.



All Beyond models come standard with lithium batteries, a digital touch screen, and wireless phone charger.



GOLF CART RESOURCE
TRUSTED AUTHORITY FOR GOLF CARTS

BINTELLI NAMED
BEST LSV / STREET LEGAL
GOLF CART



23 YEARS
IN THE INDUSTRY
AND COUNTING

COMING SOON: THE BINTELLI NEXUS

This cutting-edge electric golf cart will come standard with more high-end features than any other street-legal golf cart in the industry.
Available for dealerships starting in April 2024.



Isn't it time you experienced
the best LSV dealership
program in the industry?

SCAN NOW & LEARN HOW



BINTELLI™

bintelli.com/become-a-dealer
(843) 920-6733

EB[®]

Eco Battery

NOW AVAILABLE
51V 160AH



- ✓ COMPLETE RETROFIT KITS
- ✓ UP TO 65+ MILES OF RANGE

www.ecobattery.com



LITHIUM BATTERIES



51.2V 160AH



51.2V 72AH



51.2V 105AH



www.ecobattery.com

DID. YOU. KNOW?

GOLF CAR OPTIONS

Can Be Read Anywhere On Your
PHONE • TABLET • COMPUTER



Sign Up **HERE** or Visit
www.GOLFCAROPTIONS.com
We'll Let You Know The Minute A
New Issue Drops

Golf Car
OPTIONS
Magazine

Golf Car
OPTIONS
Magazine

MONTHLY FEATURE

80

RHOX
GARAGE

Each issue we will bring
detailed golf car installation videos
direct from the
RHOX Garage YouTube Channel.



BOX-016
RHOX Steel Utility
Box w/ Mounting Kit,
Yamaha Drive



RHOX products are sold exclusively through golf car dealers.

www.rhox.com

RHOX GARAGE

How To Videos From The RHOX Garage

March, 2024

TABLE OF CONTENTS

Drive Voyager - An Adventure Like No Other / page 12

Feature / page 22
Everywhere You Look There Are Golf Carts In Florida)

Beyond The Gated Community / page 26
What Golf Car-Type (GCT) Vehicles Should Choose as a
Consumer (or a Dealer for that Matter)

Feature / page 34
The Future Of North American Golf Cart and LSV
Manufacturers

Dealer Profile / page 54
Clear Creek Golf Car: Arkansas, Missouri & Oklahoma

Technology Meets Golf Car / page 58

The Wacky World Of Golf Cars / page 64
Are All Lead-Acid Golf Car Batteries Created Equally?

Caring for Your Sunbrella Products / page 70



cruise through your community—protected



+ Get Golf Cart insurance from Progressive

Whether you're headed to the lake or to a friend's house, when you take your golf cart off your home's property, you'll want additional coverage. With Golf Cart insurance from Progressive, you'll be protected wherever you roam.

You can get comprehensive and collision coverage to cover your belongings, accessories, and more in case of an accident. Drive on over to protect your golf cart today!



Scan to get a golf cart quote.

PROGRESSIVE.COM

or **1-800-PROGRESSIVE**

Progressive Casualty Ins. Co. & affiliates. Coverages subject to policy terms and conditions. Prices vary based on how you buy. Discounts not available in all states.

PROGRESSIVE®



VC CRUISER » 4 SEAT 108Ah

EXCLUSIVE!!!
DEALER TERRITORIES AVAILABLE »

FAST CHARGING LITHIUM-ION V³-POWER

FULL ONLINE PARTS STORE

3 YEAR PARTS WARRANTY

1 YEAR LABOR WARRANTY

CARTS ASSEMBLED IN TEXAS

Call to Reserve Your Exclusive Territory

☎ | 1.888.325.1596



V³Power
Lithium-ion Batteries

186Ah \ 108Ah



THE GOLF » 2 SEAT 108Ah



ECO4 » 4 SEAT 108Ah



ECO6 » 6 SEAT 108Ah



VC LIMO » 6 SEAT 186Ah

STANDARD CART FEATURES »

Lithium Battery \ *Independent Suspension \ Street Legal Package \ AC Motors
Disc Brakes \ Diamond Stitch Seats \ *Lighted Sound Bars \ USB Charging Port
Off Road Bumpers \ Mirror Blinkers \ *Sound Bar »

COLOR OPTIONS »



VCARTS.com



sales@VCARTS.com

*VC CRUISER & LIMO EXCLUSIVES

DEPARTMENTS

Classified Ads / page 100

Golf Car/EV/LSV Manufacturers Listing / page 96-97

Golf Cart Laws / page 75-76

Around The Community / page 18, 40, 50, 69

Around The Courts / page 98

Around The Industry / page 86-93

Around The Marketplace / page 36, 77

Around The World / page 44-45

Service, Repair & Maintenance / page 82-85

The Social Scene / page 78-80

STAFF

EDITOR

Jodi Eyles
info@golfcaroptions.com

CREATIVE

Michelle James, Frances Bayer
info@golfcaroptions.com

CONTRIBUTORS

Julie Starr, The Founder/Former Owner of
WHEELZ Custom Carts & Accessories
Stephen Metzger, Small Vehicle Resource

NEWSTANDS

www.MagCloud.com (Free Digital & Print On
Demand Copies)
www.issuu.com (Free Digital Downloads)

GENERAL INFORMATION

855-855-0638
info@golfcaroptions.com



Golf Car Options is available free of charge.
The publisher assumes no responsibility for
the accuracy of the advertisements or liability
of any business transactions resulting from
the advertisements placed in this publication.

ADVERTISER DIRECTORY

Activ-EV.....	30-31	Energy5	67	PowerFilm Solar	20
Advanced EV	32	Fantasy Custom Golf Carts	99	Progressive Insurance	7
All Sports Mfg	43	GMT Golf Cart Accessories	72-73	Red Hawk/RHOX	22
Allied Battery	19, 53	Golf Car Classics.....	74	Relion Battery	38
Best Carts	65	Golf Cart People	95	SC Carts	51
Bintelli EV	2-3	Golf Cart Stuff.....	25	SilverWolf	39
Bit DMS.....	68	GolfCarGraphics.com	100	Small Vehicle Resource	52
Build Your Golf Cart Software	100	GolfCartDog.com	95	Star EV	11
C&S Custom Golf Carts.....	65	Great Day Inc	100	Suite Seats	101
Cart Skinz	100	Jasons Golf Carts	100	TNT Golf Cars.....	48
Converted Carts	100	Lazy Life Seats + Covers	102	US Battery	57
Denago	42, 56	Long Ramps	49	V Carts	8-9
DoorWorks.....	41, 46-47	M&M Vehicle Corp	61, 63	Vegas Carts	24
Eagle Products.....	81	National Museum Of Golf Cars	20	Vegas Golf Diva	48
Eco Battery.....	4-5	National Powersport Auctions	33	Vegas Golf The Game	52, 74
ECOXGEAR	17			Winters Recreation	66
Edacar.....	37			X-iT Outdoors	16, 20



LIFTED CAPELLA 2+2



STAR

Hop on board with one of the hottest selling EV's in America

SELECT TERRITORIES ARE AVAILABLE

Contact us at sales@starev.com

starev.com





Drive Voyager - An Adventure Like No Other

Proudly built in the USA Rocket-Scientist Approved

The team at Voyager Electric Vehicles is quickly building a reputation for doing things different. You might even call it “reverse engineering the golf cart industry.” That’s because for this team of solution-minded entrepreneurs, breaking the rules of how it’s always been done is how they roll – literally.

“Voyager EV is different because we started with the end in mind,” explains Andy Ilg, Chief Operating Officer and Lead Engineer. “It’s like reverse engineering but for an entire business model.”

For Andy, who has over 13 years of experience at his own golf cart dealership, building a better golf cart came as a no-brainer after the post-pandemic shift in the industry. He saw first-hand the flood of new golf cart brands at his shop – but also the lack of dealer support and manufacturer reliability.

Voyager Electric Vehicles

1000 Crosstown Drive

Peachtree City, GA 30269

voyagerelectricvehicles.com





Explorer 6-Passenger Non-Lifted
in Coastal Blue



Mary Clarice Hathaway and Ashlee Ilg
at PGA Show 2024

"It was both an exciting time, and also very eye-opening for my dealership," Andy says. "I wasn't looking for perfection with the new carts, but I was expecting the manufacturers to stand behind their product and provide support. The lack of accountability from many of the new manufacturers was very disappointing."

After repeated experiences with numerous brands, Andy decided it was time to pursue a real solution for both his dealership and the golf cart industry as a whole. After all, he's always said "The sky isn't the limit – it's only the beginning." Designing and sell-

ing his own golf cart brand had always been a dream in the back of his mind. He knew it was the perfect time to finally make that dream come true.

He called his best friend and business mentor, Jeff Hathaway, and the two men, along with their wives and Jeff's son Lucas, shook hands on the new adventure. In the Fall of 2022, Voyager Electric Vehicles was born.

Jeff, who has a background in the automobile industry and over 35 years in the entrepreneurial world, brings a dynamic perspective to the team. He uses his sales experience and solution mindset to not only build the Voyager brand, but even more importantly, to support the Voyager dealers in their sales efforts. He can often be found on the phone helping dealers create and strategize their goals, and even setting up distributor opportunities within the network.

"Our goal is to support our dealers in a first-class way," says Jeff, Chief Executive Officer and Head of Sales & Client Rela-

Voyager Electric Vehicles

1000 Crosstown Drive

Peachtree City, GA 30269

voyagerelectricvehicles.com



Explorer 4-Forward Facing, Rebel 4-Passenger, Pioneer



Rebel 4-Passenger Lifted
in Coastal Blue

tions. “We know that when we help enough others win, we will eventually win too.”

They call it their Dealers-First Approach. It’s more than just a loose agreement; it’s a firm commitment with their dealers that they’ve got their back – in the form of Two-Year Warranty coverage including parts and labor, a full stock of replacement parts if needed, engineering expertise to help troubleshoot any repairs, sales and marketing resources, designated account managers, and more.

“We are hyper-focused on creating win-wins with our growing dealer network,” says Lucas Hathaway, President of Voyager EV. “This is a long game for us, and we want everyone to see that from our very first handshake.”

The Voyager EV brand reflects the team’s unwavering belief in defying the status quo and pursuing what others call impossible. They launched their first three models – the Pioneer, Explorer, and Rebel – in their first year with tremendous success. Their goal was to create a lineup to meet the needs of a wide variety of consumers.

The Pioneer, a 48-volt 105Ah lithium-powered golf cart, includes all the must-have features consumers have come to expect on their vehicles, with a price tag under \$10K. This 4-passenger non-lifted golf cart is the ideal door-opener for dealers to build trust with their budget-conscious customers.

The Explorer, which comes in all 4- and 6-passenger lifted, non-lifted and forward-facing configurations, is designed with a few more luxury features, including a fully integrated multimedia touch-screen with full Apple CarPlay/Android Auto functions, a Reverse Camera, and custom Steering Wheel.

The Rebel, otherwise known as the juggernaut of all adventures, is their 72-volt lithium-powered vehicle that comes lifted as a 4- and a 6-passenger. It sits on 14” all-terrain wheels and features the same luxury features as the Explorer.

Their newest launch, the Patriot, is in a lane all by itself. It features an exclusive body design, as well as a highly-demanded aluminum frame. In addition to its head-turning style and plush contoured seats, the Patriot also boasts a Double A-Arm Front



Voyager EV Team from left to right: Andy Ilg, Ashlee Ilg, Mary Clarice Hathaway, Jeff Hathaway, Lucas Hathaway

Independent Suspension design, allowing for on-the-go camber adjustment and an incredibly stable ride. The Patriot is available for pre-order now, in all 4- and 6-passenger lifted, non-lifted and forward-facing configurations.

The entire Voyager team is passionate about bringing a rocket-scientist-approved electric vehicle into the industry. But even more so, they are passionate about providing unparalleled support to their quickly growing dealer network. Because that, they believe, will raise the standards for the entire industry and change the game for good.

The Largest & Best Selection of Wholesale Golf Carts - For Dealers Only!

Press Play to Watch the Video



America's #1 Rated Golf Cart Wholesaler



- ✓ 1000's of Carts Available
- ✓ 24/7 Online Inventory
- ✓ Nationwide Shipping



[VIEW CART INVENTORY](#)

[REQUEST PASSWORD](#)

[TALK TO US](#)

ADD BOOM TO YOUR ZOOM



SEDS32 SOUNDBAR

LED

PARTY LIGHTS



EcoCast

STREAM UP TO 100 ECOCAST
ENABLED DEVICES

**500
WATTS
PEAK**



**HUGE
BASS**

**SOUNDXTREME
SUBWOOFER**



AROUND *the* COMMUNITY

Man, woman drive stolen golf cart with 'AR style rifle,' and break into Mesa business

A man and woman were accused of driving a stolen golf cart while armed with an AR-style weapon and committing robbery on a business on Wednesday, the Maricopa County Sheriff's Office said.

Deputies said that around 6 a.m., the Sheriff's Office responded to an armed robbery of a business near Crismon Road and Apache Trail in Mesa. Officials said a man and a woman on a golf cart armed with an "AR style rifle" broke into the business.

The man shot multiple rounds into the business and then fled from the scene, according to the Sheriff's Office. The suspects fled before deputies arrived.

Deputies said they located the golf cart near 105th Place and University Drive and the vehicle was confirmed as stolen.

An "unknown trouble call for service" later came in from Crismon Road and University Drive, deputies said. The call was confirmed to involve the man who

fled from the golf cart. According to deputies, the man attempted a home invasion and fired multiple rounds at the residence.

Mesa Police Department officers and deputies from the Sheriff's Office arrived and saw the man who took off running. The Sheriff's Office stated the suspect stole another car while attempting to flee and later crashed into another vehicle near Hawes and McKellips roads.

The man then fled on foot to the wash area north of the crash, according to the Sheriff's Office. Officials located him there and took him into custody. He was taken into the local hospital for "precautionary reasons" surrounding the car accident and will be booked on several "serious felony charges."

Authorities said they are investigating the extent of the woman's involvement in the incident.



ALLIED BATTERY®
—THE POWER OF LITHIUM—

LITHIUM GOLF CART BATTERIES

SIZES FOR EVERY
GOLF CAR / LSV

36V ▷ 105Ah

▷ 65Ah

48V ▷ 105Ah

▷ 160Ah

▷ 210Ah

72V ▷ 105Ah



*Allied Bluetooth app manages
the health, history and current
status of your lithium battery.*



BECOME A DEALER

- CAN bus and RS485
- Built-in Sleep Mode
- Solenoid for Long-term Storage
- 80X Faster Cell Balancing
- National Sales & Support Team
- Direct Dealer Purchasing



X-it Outdoors

ARE YOU LOOKING FOR?

WHOLESALE GOLF CARTS

AMERICA'S LARGEST WHOLESALE OF OFF-LEASE GOLF CARTS !

- Over 10,000 Carts Available
- 24/7 Password Protected Inventory
- Text Alerts for Hot Deals
- Nationwide Shipping

Email us: info@xitoutdoorsllc.com

Call us: (800) 593 - 0052

Website: xitoutdoorsllc.com

PowerFilm[®] SOLAR

ASSEMBLED IN THE USA

PowerDrive Golf Car Solar Panel





**Increase Driving Range
Extend Battery Life
Reduce Carbon Footprint**

SCAN TO LEARN MORE

www.powerfilmsolar.com 515-292-7606



NATIONAL MUSEUM OF Golf Cars
— EST. 2018




Visit the National Museum of Golf Cars and discover the history of the golf car from the very start. The museum features micro cars and beautifully restored carts from the 50's, 60's and 70's. Free Admission

Located inside the Cart Mart showroom in La Quinta ✨
78525 Ca Hwy111 Suite 200, La Quinta, CA 92253



RHGX

100

SERIES

SEAT KITS



The RHGX Rhino **100** SERIES Seat Kit

The first of Red Hawk's two new seat kit offerings for 2024, the RHGX 100-Series is an economy seat with unparalleled value.



*Shown with optional SEAT-689

All the rugged reliability you expect from RHGX — Industry-standard design crafted from powder-coated steel and injection molded plastic. Replaces three models (the 300, 400, and 700 series seats) with one great product, and it's easier to understand with fewer part numbers and less inventory to maintain. Molded in handle makes for easy transition between seat and cargo bed.

WWW.GOLFCART.COM

redhawk@golfcart.com | 866-666-7278

RED HAWK
A Family of Brands

RHGX

RED HAWK

DoubleTake

SCAN HERE
FOR MORE INFO



everywhere you look there are golf carts in Florida

Where are they allowed to go? Can kids drive them?

Throw a rock in Florida and you're bound to hit a golf cart.

In the Villages retirement oasis, there are approximately 85,000 golf carts cruising all over the place. Now imagine the number of four-wheeled menaces roaming around your own neighborhood, regardless of any actual golf course proximity.

However, the state has also been in the headlines over the years for its freak accidents regarding golf carts.

“According to the Florida statute, a golf cart is “a motor vehicle that is designed and manufactured for operation on a golf course for sporting or recreational purposes and this is not capable of exceeding speeds of 20 miles per hour”

Just last month, a 74-year-old Brooksville man died after a golf cart crash sent him flying into a pond at an RV park. In May of 2023, a bride died in a golf cart crash after being hit by a drunk driver in Daytona Beach, only hours after her reception.

Florida has recently changed up its legislation regarding golf carts in an effort to make roadways safer for all motorists. Here's what to know about Florida's laws on golf cart usage.

What is considered a golf cart?

According to the Florida statute, a golf cart is “a motor vehicle that is designed and manufactured for operation on a golf course for sporting or recreational purposes and that is not capable of exceeding speeds of 20 miles per hour.”

What are the current laws surrounding golf carts in Florida?

Gov. Ron DeSantis signed HB 949 last year, a bill sponsored by Rep. Cyndi Stevenson, R- St. Johns, that officially bans young drivers from public streets.

Prior to that legislation, section 316.212 of Florida Statutes prohibited the operation of a golf cart on public roads or streets with some exceptions like in residential neighborhoods or crossing highways if it divides a subdivision, trailer park or golf course.

HB 949 amended Section 316.212 to read that golf carts can be operated on county roads that are owned and maintained by a water control district and that road has been designated by the water control district.

Prior to that legislation, section 316.212 of Florida Statutes prohibited the operation of a golf cart on public roads or streets with some exceptions like in residential neighborhoods or crossing highways if it divides a subdivision, trailer park or golf course.

HB 949 amended Section 316.212 to read that golf carts can be operated on county roads that are owned and maintained by a water control district and that road has been designated by the water control district.

Under the new law, you must be at least 15 with a learner's permit or 16 with a driver's license before you may legally drive a golf cart on public roads. If you're 18 and older, you have to have valid government-issued identification.

What happens if you are found operating a golf cart without identification? Anyone found violating Florida's new golf cart law (or committing other violations such as speeding, failing to yield or running a stop sign) may be charged with a noncriminal traffic violation, similar to a moving violation, punishable under chapter 318 of the Florida Statutes.

Depending on the nature of the violation you can be charged fines of varying amounts. Other civil penalties or community service may be assigned by the court depending on the severity of the violation or any damages, injuries or fatalities resulting from it.

There may also be additional court costs.

Can you get a DWI while driving a golf cart?

Yes. Florida Statutes define a vehicle as a "device in, upon, or by which any person or property is or may be transported or drawn upon a highway, except personal delivery devices

and devices used exclusively upon stationary rails or tracks."

Is it legal for children to drive golf carts in Florida at all?

While there is an age limit for drivers on public roads, the statute does not mention restrictions for private properties. It is unclear if it is illegal for drivers under 15 years old to operate a golf cart on private property under the new law.

Do you have to have insurance or a license plate on a street-legal golf cart in Florida?

Golf carts are not required to be titled or registered and, therefore, are not required to be insured with Personal injury protection (PIP) and Property Damage Liability (PDL) insurance coverage

Can you drive a golf cart at night in Florida?

Unless your local government has permitted night driving and the golf cart is fitted with headlights, brake lights, turn signals, and a windshield, golf carts may only be driven during the day.

Contributing: Brandon Girod, Pensacola News Journal



We Get It...

9-hp just isn't enough!

Engine upgrade solutions for gas-powered golf garts

- Dealer pricing available!
- USA designed, manufactured, and supported
- Solutions for un-lifted golf carts



Predator 22hp Installation Kit for
1998-2014 Club Car DS



Predator 22hp Installation Kit for 1994-2008
EZ-GO TXT / Medalist / Workhorse



Predator 22hp Installation Kit for
1996-2006 Yamaha Golf Carts

Vegas Carts & Performance
www.vegascarts.com
sales@vegascarts.com
904-990-1990



Introducing the Brand New GCS™ Colorway lineup!

Order Here



Now in multiple styles and sizes!
Starting at \$429.99.
Always **FREE** shipping!



golfcartstuff.com Call (574) 333-2494 or Text (574) 612-5195

BEYOND THE GATED



What Golf Car-Type (GCT) Vehicle as a Consumer (or a Dealer for t

With the market for golf car-type (GCT) vehicles is in flux and with many new entrants in the market, both dealers and consumers are having to make choices based on an extensive mix of important variables. It is no longer simply choosing between one of the three established brands, Club Car, E-Z-GO, and Yamaha—undoubtedly good choices for many—because there are now multiple new brands available.

As a buyer or a dealer it would be useful to create a checklist of things that could help guide the choice of vehicle. Not surprisingly that while the items on the respective lists may differ, some of the most important are very much the same. Here are some those similar pairs:

Similar concerns when choosing a brand

In choosing a brand (the OEM supplier) both consumer and dealer should investigate:

- The vehicle models that an OEM makes and what attributes are standard options, which are included in the

MSRP;

- Parts availability;
- service and repair capability;

For the consumer these questions are pertinent, but for the most part he or she must depend on the dealer for the answers. Happily, the dealer is also interested in establishing or maintaining a good reputation and expanding the market for the dealership. So, positive assurances from the OEM are also critical for the dealer.

Choosing the right vehicle

Choosing the right vehicle may seem to be a straightforward matter of taste and budget. The marketplace is now changing, however, The old golf “cart” is now taking to public roads in growing numbers and is becoming a viable alternative to conventional automobiles for short distance driving purposes—whether it be for grocery shopping at the local Publix (Florida) or cruising around the neighborhood to keep in touch with friends and family.

If you will be using your GCT vehicle for the above purposes, or anticipate doing so, and you don't

COMMUNITY

es Should Choose hat Matter)

By Stephen Metzger
Managing Director
Small Vehicle Resource, LLC
smetzger@smallvehicleresource.com
www.smallvehicleresource.com

do much golfing, then you will probably be looking at quite a different vehicle than if the opposite were true (a lot of golf, not much use on public roads)

Given the variety of models now available at dealerships, the question of primary use will probably be one of the first questions the dealer will pose to you, the consumer/customer.

LSV vs. PTV: Which one should I buy?

In general the official designation of Low-Speed Vehicle, or LSV, means that the vehicle is certified as "street legal". Certain specifications have been met and a VIN number has been issued. A widely recognized limitation on public road use is that the roads have a speed limit of 35 mph or less, but there could well be, and most of the time are, local traffic regulations in force. These regulations can be very restrictive or quite liberal--tolerant to the point that PTVs may, in fact, also be allowed on public streets in certain areas.

As a rundown or summary of the differences between an LSV and a PTV, let's use the following table taken from E-Z-GO's website, which compares the company's Liberty model in its LSV and non-LSV versions:

Specifications of the E-Z-GO Liberty in LSV and Non-LSV Versions

Specifications	Liberty LSV	Express, Freedom, Valor
Headlights/Taillights	√	√
Rearview mirror	√	Y
DOT windshield	Y	+Y
DOT seatbelts	Y	+Y
Turn signals	Y	+Y
VIN number	Y	X
Backup camera	Y	X
Top speed 25 mph	Y	X
Infotainment system	Y	+Y
FMVSS500*	Y	X
SAE J2350*	Y	X

Γ Standard

+Y Optional

X Not included

* Courtesy of the E-Z-GO website: "The EZGO Liberty LSV follows the FMVSS 500 federal standard and SAE J2358 industry standard for low-speed vehicles. Check with your local rules and regulations to find out more about your area-specific restrictions."

As can be seen from the table, the following features are not included in the LSV version: VIN number, backup camera, top speed, and the various engineering specifications. A number of the LSV requirements, however, are available as options.

BEYOND THE GATED



E-Z-GO Liberty LSV and PTV

What's the bottom line: the decision variables

The decision between LSV or PTV will probably be based on three considerations;

- Intended use;
- Local regulations;
- Price differential.

Regarding price differential, the LSV version of the Liberty has an MSRP before taxes, transportation and set-up charges of \$18,999. The non-LSV version is \$3,000 less, providing a good incentive for doing the research on local regulations doing some reflection on the preponderance of vehicle use among various alternatives. It should also be noted that some states may require insurance, and the license fee will be an additional cost.

What to look for in a dealer

Because you, as a consumer, must rely on a significant amount of information from the seller; i.e., the dealer, you are in a position of having to put a good deal of trust in the sales-

person you are dealing with. More advanced economics textbooks provide a range of interesting decision models in situations of asymmetric information. Asymmetric information in this case means that the dealer has more information about the product than you, the customer, have. In such a case we look for things, aside from the product, that signal whether or not you can rely on the salesperson to give you accurate information.

Here are some tips that may be helpful in making a purchase decision from a specific dealer:

- Pretty basic: How does the dealership present itself? What does the showroom look like? Are the offices well appointed? Is the vehicle lot neat and tidy—and the vehicles themselves clean and in good shape (outward appearance)?
- Pretty simple: How are you greeted? Does the receptionist, manager, or salesperson show an immediate and attentive interest in you, as you walk through the door?
- Pretty important: You, having done your online research, are equipped to ask good questions to fill in the gaps. How well does the salesperson respond to your inquiries? For example, you are interested in riding comfort and cornering stability. How well does the salesperson explain the vehicle's suspension system and the advantages his vehicle might have. Another example: You live in hilly terrain. How well does the vehicle do in taking grades? Look for some enlightenment on the difference between speed and torque.

COMMUNITY

- Pretty essential over the long run: Be sure to inquire about after-sale servicing of your vehicle. How many mechanics does the dealership employ? What has been the warranty experience of the dealer with the products they sell? Ask about parts supply and any supply chain issues.



Golf Cart Pros in Myrtle Beach, SC. Good presentation; great reputation

In summary, the best advice

In summary, the best advice is to do your own research, so that when you go to a dealer you are prepared to ask pertinent questions. The intent here is not only to be an informed buyer, but also to determine the credibility of the salesperson and the dealership.

Secondly, do an honest evaluation of what you are going to use the vehicle for, and what you want to spend. For example, if you are going to use your GCT vehicle for local shopping and errands, consider the savings you will incur by substituting for a conventional vehicle. If this is your primary use, you may be limiting your options to finding the best LSV.

On the other hand, if you are going to use the vehicle primarily for golf and some neighborhood socializing then your best choice might be at the lower-priced end of the market. But, if there's not much of a budget constraint and you wouldn't mind generating a little neighborhood envy, then, what heck, get an LSV with all the bells and whistles!

Small Vehicle Resource (SVR) publishes new market analysis

SVR announces new analysis of the small, task-oriented vehicle (STV) market, with outstanding growth potential, and covering:

- *Impact of new industry entrants;*
- *Segment analysis—LSV.PTV, light duty utility vehicles, and fleet (electric & gas);*
- *Trends from 2016, including the COVID disruption;*
- *Forecasts by segment and by electric vs. gas to 2030;*
- *Electrification of the off-road market;*
- *New market opportunities and benefits of a national dealers' association*

Authored by Stephen Metzger, small vehicle industry expert and longtime contributor to Golf Car Options, this new analysis of industry trends is a must-read for developing market strategies and product development. If you would like to find out more about the SVR market analysis, you can contact him at: smetzger@smallvehicleresource.com or (914) 293-7577

Revolutionize Your Dealer Profits with ActiveEV

ActiveEV is looking to award one dealership in your city with the territory for its newest model, The Pulse!



ACTIVEEV

Showcase this premier golf cart brand in your dealership, and receive:

- ✓ Massive Dealer Profits
- ✓ Turnkey, Ready-to-Sell Inventory
- ✓ Low First-Time Order Requirement
- ✓ Standard Cutting Edge Lithium Battery
- ✓ 4-Year Warranty with Stress-Free Support
- ✓ Showroom Materials Free with First Order + Premade Marketing Materials
- ✓ Nationwide Dealership Support Network For Your Customers
- ✓ Nationwide Advertising To Drive Traffic To Your Dealership



10" LCD Touch Screen



Premium Captain's Chairs



14" Aluminum Wheels

Powered by Bintelli™, Driven by Innovation



SCAN NOW
for more info



For more information, visit activegolfcarts.com

ELEVATE
YOUR
LIFESTYLE



ADVENT



ADVANCEDEV™



FACTORY
5 YEAR
WARRANTY

5 YEAR WARRANTY

Taking your peace of mind to the next level, all Advent and EV1 year models 2022 and newer now include an industry-leading 5 Year Manufacturer's warranty.

Our Warranty Program provides Advanced EV owners dedicated support for warranty claims, improves warranty service coverage to all 50 states, and guarantees correction or payment for all valid claims.

ADVANCEDEV™

advancedev.com

DEALERS • BUSINESSES • OEMS • RENTAL AGENTS • LENDERS

HUNDREDS OF PRE-OWNED GOLF CARS

SPRING STOCK UP ON POPULAR MODELS



CHECK OUT THE CURRENT GOLF CAR INVENTORY!

BUY AND SELL PRE-OWNED GOLF CARS LIVE AND ONLINE

ALL MAJOR MAKES AND MODELS | ELECTRIC AND GAS-POWERED GOLF CARS

BUY SIMULCAST

Auctioning is fast and fun! Bid and buy virtually from anywhere through the NPA website or mobile app. Financing available.

REGISTER TODAY!

Getting set up to Consign or with a membership to Buy and Sell through NPA platforms is easy. Call our friendly Dealer Registration team at 888.292.5339 ext. 923301 or go online at www.npauctions.com/Register.aspx.

NPA is a business-to-business auction provider.



DEFLEET INVENTORY AT NPA

Rental agents, lenders, financial institutions, and manufacturers may contact Tony Altieri at 858.395.1836 or taltieri@npauctions.com.

NEED TRANSPORTATION?

Contact NPA Transport at transit@npauctions.com or 858.726.2209 to schedule nationwide golf car transportation.

NEW TO AUCTIONS?

Watch "Learn How To Buy Golf Cars in NPA Auctions"



NATIONAL POWERSPORT AUCTIONS CAN HELP DRIVE YOUR GOLF CAR BUSINESS

ATLANTA • CINCINNATI • DALLAS • DENVER • LAKELAND • PHILADELPHIA • PORTLAND • SACRAMENTO • SAN DIEGO



NPAUCTIONS.COM | 888.292.5339

NATIONAL
POWERSPORT
AUCTIONS **NPA**

THE Future of North American

Golf Cart and LSV Manufacturers

With the influx of new brands being imported to North America, primarily from Asian markets, where does this leave the North American manufacturers? I can assure you that the big three are feeling the pressure, and when I say the big three, everyone should know I am talking about Club Car, EZGO and Yamaha. You can see signs of this as each of these companies navigate the challenges different-

are taking a bit of a different approach. We are focusing on offering the best value in the industry, not cheapest. Dollar for dollar and feature for feature, it is our focus to offer the best value.

The reality is that it is very difficult to compete on price alone with many of these vehicles being imported and flooded into the market. However, once the dust settles and many of these new brands have disappeared, the companies that have focused on steady growth and innovation, while offering value and support to the consumer, will be here to continue to support their products and customers.

Is this new pressure a bad thing? Absolutely not. It's actually a win for the consumer; it forces the manufacturers to tighten up, become more innovative, and be aware of the competition. I have never seen so much innovation in this industry in such a short period of time! It's fantastic!



ly. Club Car has brought back a price point Precedent renamed the V4L, EZGO is innovating by introducing the Liberty, and Yamaha has now included lithium in its offering. With that being said, they all still offer a lead acid option to keep the price down. At SC Carts, we

As a manufacturer, we now have to take a bird's eye view at the global supply chain and strike a balance between cost without sacrificing quality. This is up to the manufacturer to produce quality parts, but also source quality

Author: Jeff Holomis, CEO
SC Carts
www.sccarts.ca



parts globally and bring everything together to offer the consumer the level of vehicle that they want, at a price they are willing to pay for. On the other hand, the consumer needs to understand that if they want to pay as little as possible for a vehicle, they cannot expect the same level of quality and support as they would from a higher valued offering.

A point that needs to be clear is that regardless of the country that components are manufactured in they can be good quality, or they can be poor quality (sorry North America, not everything that is made here is amazing). It's our responsibility as manufacturers to ensure proper and ethical supply chains are used.

In closing, I believe the North American golf cart and LSV manufacturers have a bright future ahead. We are even seeing new manufacturers like Honor LSV come to the table and do an excellent job of executing the balance of manufacturing and using a global supply chain just as we have been doing for years at SC Carts. I'm excited for what the future has to offer in this segment of small electric vehicles, and with so many great offerings in the marketplace, the consumers should be as well!



AROUND *the* MARKETPLACE

BASKET HITCH ATTACHMENT



from Tough Parts Fabrication | toughparts-fab.com

Basket/storage attachment for Evolution Maverick and Ranger golf cart hitch!

This attachment slides in perfectly to the all new evolution hitches!

Dimensions -36x17x6-1/2 deep

FLOOR MATS

Sensations Mat Kits



reFLEX Mat Kits

from Syntec | syntec.com

Sensations Mat Kits

Sensations mats by Syntec are the ultimate mats. Delivering exceptional performance, Sensations offer unparalleled wet and dry slip resistance. While Sensations look great and are available in a number of non-fading, eye-catching patterns, they're also tough enough to take on any terrain, with splashes of mud washing away without a fight.

reFLEX Mat Kits

A high-grip and no-slip surface with a lot of style, reFLEX Mats are made of a safe but powerful polyethylene foam that is UV-protected, non-absorbent, and easy-to-clean. These comfortable, low-maintenance mats come in a contemporary textured microdot surface or a classic brushed faux-teak finish. You can also personalize your mats with custom designs and logos.



LIFEPO4
LION

DISTRIBUTORS AND DEALERS WANTED



CARTS



BATTERY PARTS



EDACAR

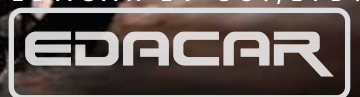
AUTHORIZED DEALER

edacar@edacarev.com

www.edacarev.com

BREEZE 4

EDACAR EV CO., LTD.



THE LITHIUM FUTURE *IS NOW*

Why settle for yesterday's battery technology to power your golf car? RELiON's cutting-edge lithium-ion batteries last longer than ever, requiring less charging and zero maintenance. It's time to upgrade your offering.



KEY BENEFITS



EASY INSTALLATION

No need to modify the battery trays, and no extra components needed.



LONGER LIFE

Lasting up to 10x longer than lead-acid batteries.



SCALABLE CAPACITY

Parallel connections allow you to meet the desired mileage range.



QUALITY GUARANTEED

All RELiON products are backed by a 10-year warranty.



BECOME A DEALER
reliombattery.com/play



DISCOVERY 4x4 ELECTRIC MOTOR KIT



4-WHEEL DRIVE CAPABLE



FULLY ENCLOSED AND WATERPROOF



TOWING AND CLIMBING POWER

EXPAND YOUR FRONTIER

Expand your frontier with the all new SilverWolf™ Discovery 4x4 Electric Motor Kit that turns your electric golf car into a fully capable all-terrain vehicle.

Using two independent direct-drive electric motors mounted inside the two front wheels, this simple do-it-yourself, or dealer upgrade boosts the performance of your electric golf car. With 4-wheel drive capability in both forward and reverse, confidently take on rough off road trails, soft sandy terrain and wet muddy conditions. Unlock a world of possibilities with enhanced torque for towing utility and recreational trailers.



Visit our web store today at SilverWolf.com to get started!

hello@silverwolf.com www.SilverWolf.com

Visit the SilverWolf™ Booth #2648 at the
PGA Show in Orlando, on Jan. 23-26!

AROUND *the* COMMUNITY

Golf carts mingled in traditional traffic are sending more Central Florida children to the ER



Local doctors say the combination of golf carts mingled with traditional traffic is landing more and more kids in the emergency room with head injuries.

First responders are training to respond to golf cart collisions with mannequins, but the threat is becoming very real these days, such as their simulated scenario where a golf cart collides with a pickup truck.

The trauma medical director at Arnold Palmer Hospital is tracking Central Florida incidents.

"One hundred and eighty children over a four-year period, so pretty common, pretty significant and big uptick in the last year," said Dr. Donald Plumley.

As an effort to reduce risk, a new state law does regulate how old somebody has to be to drive a golf cart. You must be 15 with a learner's permit or 16 with a license to operate the golf cart.

Medical experts are not just concerned about golf cart safety with kids behind the wheel, but say there's a concern for children even with licensed adults driving.

"Just because they're in a golf cart and not a car, they need to be restrained just like a car: infant

safety seats, carrying a baby on your lap isn't doing it right now," Plumley said.

"It's golf carts that are going slower so how can that hurt somebody? Easily, as it turns out," said Seminole County's EMS director Dr. Todd Husty.

The carts are moving at slow speeds for a vehicle, but as Husty points out, plenty fast for unrestrained children.

"Fifteen miles an hour into concrete is enough to really injure the brain of a small child," Husty said.

They say that of all vehicles, golf carts need to follow the rules of the road. Additionally, seatbelts are enormously important.

"Whoever's driving the golf cart really needs to pay attention to the rules of the road, stop signs, yield signs, but the other should be seat belts, seat belts, seat belts, everybody should be belted in," Husty said.

<https://www.wesh.com/article/golf-cart-accidents-central-florida/46180287>

Get the Best Track-Style Enclosures!



Become an



Authorized
Dealer

DOORWORKS®

— Golf Cart Enclosures —

PATENTS #6547304 & 6776445

UPGRADED FEATURES!

- Zippered Sleeves for front roof support. Great for side mirrors!
- Snaps to cart for secure fit, no hooks.
- Wider door openings for easier cart entry & exit.
- Matching DryClub Canopy for 2 passenger golf carts.
- Fast lead times and in-stock items.
- Made for 2, 4 and 6 passenger golf carts.



AVAILABLE FOR:

ADVANCEDEV
CLUB CAR
EPIC
EZGO
EVOLUTION
ICON
YAMAHA



DenagoEV.com
866-996-3838

**-New Location-
-Bonifay FL-**



**-Family Owned-
-American Made-**

UNDER NEW OWNERSHIP

Now Selling!

4" Onward Lift Kits TO THE PUBLIC



**Designed, Built, Assembled &
Sold Exclusively to Club Car
for over 15 Years**



MADE IN AMERICA

*Many items in stock as of 03/01/24
(excluding long travels and stainless steel
accessories)*

*We only use 5/8 ball joints with specified inserts (tested and approved by
Club Car) instead of the standard half inch on most lifts.
All Precedent, DS, and the new 4" Onward lifts are in stock.*

(850) 477-5244 | www.allsportsliftkits.com

AROUND *the* WORLD



GOLF CART NEWS FROM SOUTH KOREA

A special-purpose vehicle developer out of South Korea has introduced a new line of electric golf carts that can bring more technology and comfort to the game.

While these innovative Cruise Labe EVs won't help shave strokes off your score, they provide luxury, protection from the elements, and a slew of cool features sure to impress others on the links.

Daeji Precision Company is a Korean manufacturer founded in 1975 specializing in special-purpose vehicles. Over its nearly 50-year history, it has developed vehicles for Hyundai, Samsung, and the Korea International Trade Association.

Its current lineup consists of unique builds such as eco-friendly liquid snow removal vehicles, water cannon trucks, and even "protest suppression vehicles." However, Daeji P&I caught our eye at the PGA America Show, where it showcased its Cruise Labe line of electric golf carts.

While golf is a sometimes frustrating but ever-evolving game thanks to advancements in club technology, the vessels that putt players around have remained relatively the same for decades. Some courses have adopted all-electric versions of the Club Cars you'd probably recognize, yet some still use noisy gas versions that never seem to fit in amongst the calm, pristine landscapes they navigate.

While the open design of these golf carts is beneficial on perfect days, the solutions for days where the weather could be better leave much to be desired. You're either too hot with nowhere to cool down, getting pelted by drizzle as you cruise to the next hole, or too cold to truly enjoy yourself. Sure, there are zippable cloth walls for those cooler months, but they really slow the game down when you continuously have to open and close them to keep the heat in.

Daeji has a solution, and it's an exciting one. The company is promoting a line of electric golf carts that can comfortably transport 4-6 passengers and their clubs inside a new design that protects players from stray balls and less-than-ideal weather with HVAC and a slew of cabin features.

It's about time the electric golf cart evolved

Daeji P&I's Cruise LABE line of electric golf carts provides a fresh, sustainable, all-weather solution to commuters on and off the tee box. Designed for golfers, these carts can also serve short-route travel options in smart cities, national parks, and resorts.

Available in a four-seat signature version and a six-seat presidential limousine variant, the Cruise LABE takes the golf cart to a premium level you may see in the clubhouse and around the course, but usually not within the vehicles to get you around.

Each cart comes equipped with heated seats, air circulation with the capability to add heating and air conditioning, mini bar storage, a thermo-electric refrigerator, and removable doors. The electric golf carts also come equipped with taller roofs for more headroom and an extendable sliding feature to keep your clubs dry or out of the sun.

Be gone with the days of torn, tired Club Car seats and windscreens that won't stay up or are cracked. The Cruise LABE line of electric golf carts brings a new level of luxury to golf – a sport that already comes with its own level of prestige and comfort – it's about time those vehicles matched the lifestyle.

72-volt lithium-ion batteries power each cart, enabling speeds up to 8 km/h (5 mph) in auto mode and 22 km/h (~14 mph) in manual mode. Maybe you're merely a spectator on the course, or you've played so poorly that day you call it quits after nine holes (it happens); the Cruise LABE electric golf cart can make the rest of the round much more comfortable, whether you start DJ'ing on the included speaker, enjoying a beverage, or just relaxing in one of the leather seats.

Since these are manufactured in Korea, we have not determined their prices, but we have inquired. Following the Daeji P&I exhibit of the Cruise LABE electric golf carts with the PGA of America this month, we hope we see them on some US courses soon if they're not already there.

Learn more at: <http://www.daejicar.com/eng/main/main.php>

Article via email: <https://electrek.co/2024/02/01/golf-luxe-ev-electric-cart-limousine-version/>



DOORWORKS®

— Golf Cart Enclosures —

PATENTS #6547304 & 6776445

HINGED DOOR ENCLOSURES



CLUB CAR

EVOLUTION



EZGO



ICON



YAMAHA



UTILITY CARTS



4 PASS CLUB CAR



4 PASS EZGO



4 PASS ICON



4 PASS EVOLUTION



6 PASS EZGO



6 PASS ICON

DoorWorks Hinged Door solutions for over 60 vehicles!

- Easy Install: includes detailed instructions and hardware.
- Versatile Hinged Doors: The DoorWorks doors can be lock closed, locked open with the Over-the-Top standout latches, or removed all together.
- Available 2, 4, 6 and 8 Passenger Vehicles.
- Made for popular models including Club Car, EZGO, Evolution, ICON, AdvancedEV, Yamaha and more.



BECOME
A DEALER



1-866-888-3667



Orders@DWParts.com

OEM YAMAHA PARTS & ACCESSORIES



**Free
Shipping**
with
\$150 order*



* Full details on website



Your Parts are Here!
yamahagolfcarparts.com



yamahagolfcarparts.com

Need Cocktails

A Must For The Diva Golfer



NEED COCKTAILS GOLF TOWEL

* Comes with a large easy to attach clip to fit any golf bag.



DUAL PURPOSE - Waffle style microfiber golf towel keeps your clubs clean while making sure you are never out of COCKTAILS!

Pink side with NEED COCKTAILS lets the beverage cart know you need a round. Green side with PAR TEE lets them know you are having fun and probably need more.

Simply drape your towel over the windshield to alert the Cocktail Cart you need a round.



www.VegasGolfDiva.com

LOAD YOUR GOLF CART

with confidence!



**Low-incline
3" side rails
2,500lbs capacity**

LongRamps.com | info@longramps.com

AROUND *the* COMMUNITY

Shocking Video Shows Alligator Try to Attack Golfers on Course



Frighening video captured on a golf course in Ave Maria, FL shows a cart full of players narrowly avoiding the hungry jaws of a pouncing alligator. Lindsay Saban, a local meteorologist with WINK News, posted the video to her Facebook page.

The footage was captured by another guest at the golf club, Denise Pruse, from behind the safety of the pool's chain link fence. It shows the alligator, seemingly about five feet in length, slowly stalking through the grass between bungalows. It's trying to make its way back to the pond, which is separated from the grass by a cement walkway.

The unlucky cart passes just as the gator is right in the middle of the walkway. It strikes out at the driver, who swerves to miss the beast and inadvertently drives down the hillside leading to the pond. It appears the two occupants managed to escape without injury, while the gator shook off the encounter and continued to the water.

Many commenters were quick to condemn the cart's drivers for attempting to outrun the alligator, rather than brake and wait for it to cross; however, a fairly equal number of people came to the driver's defense, noting it was clear he didn't see the

animal until he was too close to stop.

Others just seemed relieved that they weren't the alligator's target. "This is why I would never, ever live in Florida," one commenter proclaimed.

"So glad my yard is fenced in," one X-user wrote, accompanied by a rather ominous photo of their wiener dog.

Meanwhile, some posited the alligator's actions may have been politically motivated. "I'm on the alligator's side," one offered. "We keep taking their homes and land."

According to WTSP 10 in Tampa Bay, Florida is home to 1.25 million alligators. Encounters between humans and animals in the state are hardly rare. Many have much more severe consequences than the incident on the golf course. In September, a 14-foot alligator was found with the body of a deceased woman in its jaws. aryl 26, 2024.

THE ULTIMATE JOY-RIDE

STREET LEGAL CUSTOM LOW-SPEED ELECTRIC VEHICLES



[SCCARTS.CA](https://sccarts.ca)

SVR Small Vehicle Resource

Vehicles For Personal Use | Vehicles For Commercial Use

Small Vehicle Resource is your one-stop source for information on small task-oriented vehicles: Utility vehicles, LSVs/NEVs and Golf Cars for commercial or personal use. smallvehiclresource.com



Find A Dealer
Add Your Dealership
Buying Guides
Research Guides
Complete Brand Listing
Blog
News

BONUS EDITION!

BONUS EDITION!

Vegas Golf
On the Course Golf Game

Authentic Poker Chips!
12 CHIPS!

FREE! BONUS CHIPS
Eagle & Grave Digger*

FREE! Accessory Bag with Carabiner (on back)

*Grave Digger takes more than one shot to get out of sandtrap.

Take Your Golf Game of Trash Talk to a New Level and Bet on Having Lots of Laughs

You will have a blast with your golf buddies. Simply agree on a value for each chip before teeing off. Golfers want the positives and avoid the negatives. New Grave Digger...takes you more than one shot to get out of the sand-trap. Your shot goes into the water - you get the water chip. Furthest from the pin on a Par 3...gets you the Beer Chip which puts you on the hook for a round when the Beer Cart comes by.

ONLY \$19.95
FREE TEE BAG
FREE SHIPPING
Order Now!



www.vegasgolfthegame.com





ALLIED BATTERY®
— THE POWER OF LITHIUM —



Become a
Dealer



SCAN HERE

- The Leading “Drop-in-Ready” Lithium Golf Cart Battery Solution
- Available in 36V, 48V and 72V
- Add batteries for additional run time - from stock carts up to high-performance LSVs



Allied's Bluetooth App
provides accurate
State of Charge,
Cycle Count,
Cell Status
and much more!



Get a full charge in
only 2 - 4 hours.



Comm Port / BMS Linked
Battery Monitor
shows accurate remaining charge.

**Allied Battery is a U.S. company
dedicated to providing fully supported lithium energy solutions**

CLEAR CREEK GOLF CAR | 479.621.9494

CLEAR CREEK ACQUIRES OZARK GOLF CAR



Golf car companies combine in local acquisition

clearcreekgolfcar.com | Arkansas, Missouri & Oklahoma

In January, Clear Creek Golf Car and Utility Vehicles, a 45-year distributor for Club Car based out of Ozark, Mo., acquired Ozark Golf Cars and Utility Vehicles, marking its fourth acquisition in three years. With the addition of Ozark Golf Car's Ozark and Clinton, Mo., locations, Clear Creek Golf Car has expanded from two stores to 11 within the last five years, acquiring the Club Car distributor in Little Rock in early 2021, then the Club Car distributor of Oklahoma and an E-Z-GO dealer in Russellville, Ark., in 2023.

"We are very excited about the acquisition of Ozark Golf Cars. Spencer King built and ran a great business for nearly 20 years. He brings some great relationships, along with a lot of knowledge and experience, over to the Clear Creek family," said Brian Cheever, CEO of Clear Creek Golf Car. "The addition of the E-Z-GO and Cushman product lines is huge for Clear Creek, but we are equally excited that Spencer will be coming on board as a Clear Creek team member, as are his employees, who are also exceptionally good at what they

do. Club Car and E-Z-GO are the top two golf car brands in the world, both American-made, and Clear Creek Golf Car is honored and excited to be the Ozarks' home for sales, service, and support of both."

With the acquisition, Clear Creek Golf Car and Utility Vehicles will carry E-Z-GO and Cushman in its Ozark, Lamar, Osage Beach, and Clinton, Mo., locations, and will carry Yamaha golf cars exclusively at its Clinton location. Ozark Golf Car's location in Ozark, Mo., will close, with all sales, service, parts, and rentals moving to Clear Creek's headquarters.

"Due to the success of both of our companies, it only made sense to merge with Clear Creek Golf Car," said Spencer King, owner of Ozark Golf Cars. "This merger is going to provide the best product lines, knowledge, and experience to all our customers, both existing and new. For years, we were direct competitors with Clear Creek, but their values are clear and they are awesome, and that's what excites me



the most. I'm eager to see what the future holds."

Ozark Golf Car was the number one E-Z-GO and Cushman dealer in Missouri and has received the national E-Z-GO top retailing dealer award. Clear Creek has been honored as Club Car's Distributor of the Year for two of the past three years, which is the highest award Club Car presents.

About Clear Creek Golf Car & Utility Vehicles: Clear Creek Golf Car is an award-winning Club Car distributor in business for over 45 years with territory in four states. With locations in Ozark, Osage Beach, Lamar, and West Plains, Missouri; Little Rock and Rogers, Arkansas; and Oklahoma City and Tulsa, Oklahoma, Clear Creek Golf Car has a team of over 120 employees and is headquartered in Ozark, Missouri. Clear Creek can be found online at clearcreek-golfcar.com.

About Ozark Golf Cars and Utility Vehicles: Ozark Golf Cars and Utility Vehicles was started in Ozark, Mo, in 2005 and sells E-Z-GO and Yamaha golf cars, along with the Cushman utility/industrial line. In 2019, Ozark Golf Cars acquired King Karts in Clinton, Mo.



Life is good

Have some 🌮 🌮 🌮

Sell lots of 

Inquire now
So there's no FOMO



Essential

es-en-tial - (/ə'sen(t)SHəl/)

1. *adj.*: absolutely necessary; extremely important
see also **Safe, IP67 Water-Proof Construction, Long-Lasting, Maintenance-Free, Scalable**
2. *n.*: something that is absolutely necessary
see also **48 Volt, 105Ah, State-of-the-Art BMS, Lithium Iron Phosphate(LFP)**



ESSENTIAL^{Li}
POWERED BY U.S. BATTERY MFG. CO.

DEEP CYCLE LITHIUM-ION BATTERIES





Technology *meets* Golf Car

Exploring the Range of Golf Cart Travel

How far can a golf cart travel? It's a question that holds significant importance for golfers, resort owners, event planners, and those who rely on golf carts for transportation across various terrains. Understanding the range of a golf cart is crucial for maximizing its utility and efficiency, as the distance it can travel depends on factors such as the type of cart, battery capacity, and terrain. Golf carts have evolved from being mere tools for transporting golfers around a course to versatile vehicles used in a wide range of applications, from commercial and industrial operations to personal transportation. As the use of golf carts expands, so does the need to comprehend their range capabilities in different scenarios.

When examining the travel distance of golf carts, it's essential to consider various factors. The type of cart,

battery technology, terrain, and maintenance all play crucial roles in determining how far a golf cart can travel on a single charge. Let's delve into these factors to gain a comprehensive understanding of the range of golf cart travel.

Battery Technology and Capacity

The type and capacity of the batteries installed in a golf cart significantly impact its travel range. Lead-acid, lithium-ion, and other advanced battery technologies are commonly used to power golf carts, each with its own set of advantages and limitations.

Lead-acid batteries have been the traditional choice for powering golf carts. While these batteries are affordable, their energy density and lifespan are relatively lower compared to newer technologies. This can result in reduced travel distances on a single charge, making lead-acid battery-powered carts more suitable for shorter trips.

On the other hand, lithium-ion batteries offer higher energy density and longer lifespans. Golf carts equipped with lithium-ion batteries can typically cover greater distances before needing a recharge, making lithium-ion technology a popular choice for manufacturers and owners aiming for extended travel ranges and improved efficiency.

Battery capacity, measured in kilowatt-hours (kWh), is also a critical factor in determining a golf cart's travel range. Golf carts with higher battery capacities can travel longer distances on a single charge compared to those with lower capacities. Moreover, newer developments in battery technology, such as rapid charging and improved energy density, are continuously enhancing the travel range of golf carts, further contributing to their overall efficiency and usability.

Environmental Factors and Terrain

In addition to battery technology and capacity, environmental factors and terrain greatly influence the travel range of a golf cart. Environmental conditions such as temperature, humidity, and altitude can impact the performance and efficiency of the batteries, ultimately affecting the cart's travel range.

Temperature, in particular, plays a significant role in determining the range of a golf cart. Extreme cold or hot temperatures can lead to decreased battery efficiency, resulting in reduced travel distances. Proper battery management and temperature control systems can help mitigate these effects, allowing golf carts to maintain optimal performance across varying environmental conditions.

Furthermore, the terrain on which a golf cart is operated plays a crucial role in determining its travel range. Smooth, flat surfaces allow for more efficient energy utilization, enabling golf carts to travel greater distances on a single charge. In contrast, rough or hilly terrain can place higher demands on the cart's powertrain, leading to shorter travel ranges. It's important for golf cart users to consider the terrain they will be navigating and choose carts with appropriate features and capabilities to meet their specific range requirements.

Type of Golf Cart

The type of golf cart also influences its travel range. Traditional golf carts designed for use on golf courses are typically optimized for shorter-distance travel, with a focus on maneuverability and efficiency within the confines of a course layout. These carts are well-suited for their intended purpose but may not be optimized for longer-range travel across diverse terrains.

In contrast, utility and recreational golf carts are designed to accommodate longer travel distances and various operating conditions. These carts often feature enhanced battery systems, durable construction, and advanced powertrains to support extended travel ranges. Whether for commercial use, event management, or personal transportation, selecting the appropriate type of golf cart is crucial for achieving the desired travel range and performance.

Regular Maintenance and Upkeep

Maintaining a golf cart in optimal condition is essential for ensuring its maximum travel range. Routine maintenance, including battery care, tire pressure checks, and electrical system inspections, can significantly impact a golf cart's efficiency and performance. Proper upkeep helps to minimize energy losses, optimize power delivery, and ensure that the cart can achieve its maximum travel range potential.

Charging infrastructure also plays a vital role in supporting the travel range of golf carts. Access to reliable charging stations and infrastructure is crucial for ensuring that carts can be recharged as needed, enabling them to cover longer distances without concerns of running out of power mid-journey.

As technology continues to advance, the range of golf cart travel is expected to expand even further. Innovations in battery technology, energy management systems, and powertrain design are continuously pushing the boundaries of what golf carts can achieve in terms of travel range and efficiency.

In conclusion, the travel range of a golf cart is influenced by a combination of factors, including battery technology, capacity, environmental conditions, terrain, type of cart, and maintenance practices. Understanding and optimizing these factors are essential for maximizing the efficiency and performance of golf carts across diverse operational scenarios. As the demand for golf carts in various applications continues to grow, advancements in technology and design will further enhance their travel range, making them even more versatile and valuable transportation solutions.

Article reprint: <https://www.hdkexpress.com>



How long does it take to GOLF 18 HOLES WITH A CART

There are a few factors on how long does it take to golf 18 holes with a cart. From the pace of play, number of players, skill level, traffic on the course, weather etc. Let's take a look at the average play time for 18 holes with a cart...

How much time 18 holes take with a cart

The average play time of 18 holes with a cart is 3 hours to 3 ½ hours. This is an average game in a flight of 4 golfers without excessive ball searching, slow play etc.

Keep in mind that the most common reason you're slow with the cart is a slow play of the guys in front of you. It's often annoying, but that's just the way it is.

Number of players	Lowest avg. time with cart	Highest avg. time with cart
1	1h 30min	5h
2	2h	5h 20min
3	2h 40min	5h 40min
4	3h	6h

The golf cart play time with really depends on a lot of factors:

- Golf course occupancy
- Skill level
- Golf course design and length
- Number of players

Data: www.golftmadness.com

Golf Bag Racks!



Round Tube

OWGOLFB -
Onward Golf Bag
Attachment



OWGOLFB6 - Onward Golf
Bag Attachment with 6" drop



RXVGOLFB - RXV
Golf Bag Attachment



1-800-686-5978 573-581-4914 Fax 573-581-2046

Manufacturers of Specialty Vehicles and Components

19873 HWY 22 West Mexico, Missouri www.mmvehicles.com





GAS VS ELECTRIC



HOW MUCH ARE NEW ELECTRIC AND GAS CARTS?

New Electric golf carts average around \$10,520 in price across all brands, power types, and 2-seat or 4-seat seating configurations. This calculation was made using MSRP data from manufacturers websites or data collected from our golf cart dealer network.

NEW Electric Golf Cart PRICES

Average price of a 36-Volt golf cart: \$8,120 (these are phasing out)

Average price of a 48-Volt golf cart: \$10,520

Average price of a 72-Volt golf cart: \$14,350

Average price of a 2-Seat Lithium golf cart: \$13,899

Average price of a 4-Seat Lithium golf cart: \$15,430

Average price of a 6-Seat Lithium golf cart: \$20,740

COST of New LITHIUM Golf Carts

Since Lithium Carts are new to the market since the year 2019, they have never been offered in 36-Volt options from the major manufacturers. Therefore, it is more helpful to look at Lithium golf cart prices (most are 48-Volt and some are 72-Volt) by Seating Capacity instead of power. Lithium carts are also not offered by all manufacturers yet.

New Lithium golf carts average around \$14,700 in price across all brands and 2-seat or 4-seat seating configurations. When you include 6-seat, the average moves up to \$16,700. This calculation was made using MSRP data from manufacturers websites or data collected from various golf cart dealer networks.

NEW Gas Golf Cart PRICES

New Gas golf carts are priced similar to new regular Electric carts, averaging around \$11,985 in price across all brands and seating types. This calculation was made using MSRP data from manufacturers websites or data collected from various golf cart dealer networks. .

New gas golf carts all come with similar power units 11.5hp to 13.5hp. Since their power levels all tend to be similar, it is more helpful to look at gas golf cart prices by Seating Capacity instead of power.

Average price of a 2-Seat Gas golf cart: \$10,155

Average price of a 4-Seat Gas golf cart: \$11,985

Average price of a 6-Seat Gas golf cart: \$16,730

GRAND TOURING

GT280CCPR

!NEW PRODUCT ALERT!



"WONT RUST LIKE STEEL-
BREAK LIKE PLASTIC OR
GET SLIPPERY WHEN
WET"



AVAILABLE WITH:

- STANDARD SEATS
- CUSTOM SEATS
- NO SEATS TO INSTALL ON YOUR OWN

SHOWN WITH OPTIONAL
TRUNK



1-800-686-5978 or 573-581-4914 mmvehicles.com



Are All Lead-Acid Golf Car Batteries Created Equally?

Golf Car batteries are one of the largest expenses golf car owners invest into their vehicle. When properly maintained, your golf car battery pack can provide several years of outdoor enjoyment. When batteries are well maintained, they can yield up to 750 cycles before they begin to fade.

With seemingly limitless options for golf car batteries, how do you know which ones to purchase? All golf car batteries are not created equally, so it is important to do your research and consider which batteries will best meet your performance and budget needs.

Battery Capacity is Important

Battery capacity refers to how much run time you will have with a single charge. The formula is simple. The more lead, the longer the run time. When the Club Car Precedent golf cars were released with four 12V batteries rather than six 8V batteries, golf car capacity became a hot topic. A standard 48V golf car with an 8V battery configuration will yield approximately 20 hours of run time. The same golf car with 12V batteries will only yield about 17 hours of run time. Why? Because, although both configurations are 48 volts, six batteries have a longer minute capacity than four batteries. Similarly, when shopping different brands of golf car batteries, cheaper is not always better. Consider the capacity of each battery and whether it will provide an adequate run time for your use.

Brand is Important, Too

Each battery brand makes claims about having better technology and being the best choice for your golf car. In reality, once you have decided on voltage and run time, a few brands will emerge as the leaders.

1. Trojan

Known to be one of the best brands of battery in the golf car world, Trojan batteries typically come at a premium price. The greatest value in purchasing Trojan golf car batteries is that they offer a two-year full replacement warranty.

2. US Battery

Offering similar battery specifications as Trojan, US Battery also has a strong reputation and warranty. Founded in 1926, US Battery is a well trusted brand for both deep cycle and AGM batteries.

3. Deka Batteries

A private, family owned battery company, EastPenn is the manufacturer of Deka Batteries. Although they don't market heavily to golf car owners, Deka Batteries are known to be one of the best brands of batteries on the market.

Whether you choose one of these top brands or another brand like Crown or VMax, stay away from Costco or Sam's Club golf car batteries. It is easy to be enticed by a low-priced battery; however, warehouse clubs are notorious for selling generic brands with older date stamps. The fresher the battery, the better it will perform over time.

Maintenance is Key

Even the perfect battery requires routine battery maintenance in order to continue performing up to par. Regular charging and filling help batteries perform at their peak. When replacing your golf car batteries, ensure that your charger is programmed for your new batteries. Battery chargers have algorithms that may not be compatible with every brand.

The spring is quickly approaching and now is the time to test your golf car batteries. Should you need to replace, use this quick guide to purchase the perfect batteries for your golf car.



About the Author: The Founder/Former Owner of WHEELZ Custom Carts & Accessories, Julie Starr, was one of the industry's first online retailers of golf car products. The eCommerce store, www.WHEELZLLC.com, has served golf car owners since 2008 and remains a popular online shopping experience for golf car owners who want to take their golf cars to the next level.



Top Quality Golf Cart Batteries And Chargers

Making Fun Affordable



844-300-BEST (2378)

C&S CUSTOM GOLF CARTS

Authorized Dealer For AllSportLiftKits.com

Lift Kits • Tires & Wheels • Seat Covers
Motors • Electric & Gas



cscustomgolfcarts@hotmail.com
www.cscustomgolfcarts.jimdo.com
314.704.3655

RHOX GARAGE

Each issue we will bring detailed golf car installation videos direct from the RHOX Garage YouTube Channel.



BOX-016
RHOX Steel Utility
Box w/ Mounting Kit,
Yamaha Drive



RHOX products are sold exclusively through golf car dealers.

www.rhox.com

DEALERS WANTED

→ SPECIAL DEALER CONTRACT PRICING AVAILABLE



**SPECIALIZING IN USED CUSTOMIZED
GOLF CARTS AND NEW GOLF CARTS**

OVER 250
GOLF CARTS INDOORS

TOP BRANDS



39204 COUNTY RD 186 • SAUK CENTRE, MN 56378

GOLF CAR OPTIONS | WWW.GOLFCAROPTIONS.COM



Discover Your EV Charging Profit



More Electric Golf Cars/LSV/EVs mean more customers and more revenue for your business. With Energy5's turnkey solutions, we take care of installation, operation, and maintenance, so you can focus on your business.

**Wondering about EV Charging revenue for your business?
With Energy5, from setup to software, we've got you covered in the #EV journey.**

**Try our EV Charging Earnings Calculator now
<https://energy5.com/evcharging/ev-calculator>**

TRACKING PROFITABILITY HAS NEVER BEEN **EASIER**



BOOK A DEMO

The **ONLY** dealership management software designed for golf car dealers



**DEALERSHIP
SOFTWARE**

865.686.6544 | BiTdms.com

AROUND *the* COMMUNITY



Police respond to a stolen golf cart report in Rialto. (Rialto Police Department)

Apple AirTag helps police catch suspected golf cart thief

An Apple AirTag recently helped police catch a man suspected of stealing a golf cart from a Rialto shopping center.

Officers responded to the Rialto Marketplace shopping mall after a security guard reported the theft, the Rialto Police Department stated in a post on **Instagram** February 8th.

After completing a shift, the security guard told police that the golf cart was parked in its designated area but it was discovered to be missing when a coworker arrived later.

During their investigation, police discovered surveillance video that showed a man driving off in the golf cart.

"Unbeknownst to the suspect, the golf cart had an Apple Airtag attached to it," the Police Department said.

Officers managed to track the AirTag to the area of North Meridian Avenue and West San Bernardino Avenue in the City of Colton where they recovered the stolen golf cart.

They also located a man who matched the description of the thief observed in the video footage.

The suspect, later identified as Bradley Dronin, 44, of Rialto, was arrested and booked on suspicion of possessing a vehicle known to be stolen and taking a vehicle without the owner's consent, the Police Department stated.

Need a holder for your AirTag? Here's a good option we found on eBay.

Magnetic AirTag Holder Case For Golf Cart Car Vehicles





CARING FOR Sunbrella

Enclosures and seat covers

Cleaning Instructions

One of the best ways to keep Sunbrella® fabrics looking good and to delay the need for deep or vigorous cleaning is to hose fabrics off on a monthly basis with clear water. This practice will help prevent dirt from becoming deeply embedded in the fabric and eliminate the need for more frequent vigorous cleaning. In most environments, a thorough cleaning will be needed every two to three years. When cleaning Sunbrella fabrics, it is important to observe the following:

- Always use a mild soap such as Ivory Snow, Dreft or Woolite.
- Water should be cold to lukewarm. (Never more than 100°F/38°C.)
- Rinse thoroughly to remove all soap residue.
- Air dry only. Never apply heat to Sunbrella fabrics.

General or light cleaning

To clean Sunbrella while still on a golf car, follow these simple steps:

- Brush off loose dirt.
- Hose down.
- Prepare a cleaning solution of water and mild soap such as Ivory Snow, Dreft or Woolite (no detergents).
- Use a soft bristle brush to clean.
- Allow cleaning solution to soak into the fabric.
- Rinse thoroughly until all soap residue is removed.
- Air dry.
- May not require re-treatment depending on the age of the fabric.

If stubborn stains persist, you can use a diluted chlorine bleach/soap mixture for spot cleaning of mildew, roof

R YOUR ella[©]

run-off or other similar stains (see our Stain Chart for specific recommendations).

Heavy cleaning for stubborn stains and mildew Sunbrella fabric does not promote mildew growth, however, mildew may grow on dirt and other foreign substances that are not removed from the fabric. To clean mildew or other stubborn stains:

- Eight ounces (1 cup) of chlorine bleach.
- Two ounces (¼ cup) of mild soap and/or detergent.
- One gallon of water.
- Clean with a soft bristle brush.
- Allow mixture to soak into fabric for up to 15 minutes.
- Rinse thoroughly until all soap residue is removed.
- Air dry.
- Repeat if necessary.
- Re-treatment of fabric for water and stain resistance will be necessary.

Remember to protect the area around your Sunbrella if using a bleach solution. Carpet or other fabrics that are not Sunbrella may have an adverse reaction to the bleach.

- Use mild soap and/or detergent.
- For heavier stains add 1 cup of bleach to wash.
- Wash and rinse in cold water.
- Air dry. Never apply heat to Sunbrella.
- Re-treatment for water and stain resistance will be necessary after machine washing.

Re-treating the fabric

As part of the finishing process, Sunbrella fabrics are treated with a fluorocarbon finish, which enhances water repellency. This finish is designed

to last for several years, but must be replenished after a thorough cleaning. Fabrics should be re-treated after thorough cleaning or after five years of use.

*Synthetic fabric heat settings normally do not exceed 150°F/66°C Applying 303 High Tech Fabric Guard 303 should be applied to Sunbrella fabrics after each thorough cleaning, which typically removes the original finish and reduces the fabric's water repellency.

- Clean Sunbrella fabric, using one of the cleaning methods.
- Allow Sunbrella to completely air dry.
- Apply 303 Fabric Guard in a well ventilated area following instructions on the container.
- Apply 303 in a thin, even coat and allow the fabric to dry completely.
- Apply a second thin, even coating of 303. (Two light coatings are more effective in restoring fabric water resistance than a single heavy coating.
- A 15-ounce bottle provides coverage of up to 50 square feet of fabric.)

For more information, please visit www.303products.com.

Helpful Hints

Protect the area around the Sunbrella fabric when using a bleach solution – bleach may discolor non-Sunbrella fabrics. Always rinse Sunbrella thoroughly to completely remove bleach.

Sunbrella air dries very quickly. Machine drying is not necessary.

If the fabric has some wrinkling, use an iron, if necessary, but only on the synthetic* setting. As some irons exceed the recommended 100°F/38°C temperature on the synthetic setting, test a small inconspicuous area before ironing entire piece.

*DO NOT use a steamer or iron set to steam setting.

*Use of bleach and/or advanced age of the fabric application may impact the deterioration of the sewing thread and other non-Sunbrella components.

*DO NOT dry clean Sunbrella

STYLE YOUR CART WITH GMT

E-Z-GO RXV (patented design) FULL Dashes & Trim Plate



EZ RXV DASH

EZ RXV DASH

EZ RXV Gauge TRIM plate

GMT dashboards for all major brands promote quick trouble-free installation. Available in all of GMT's popular colors. Club Car dashes available in two and four-cup holder models as above.

Yamaha Drive RADIO Adapter Series 200

Fit 2017 -up. Patent Pending

- Adds automotive styling and convenience
- Easy installation, just remove factory cup holder and replace with Series 200 dash radio adapter
- Precut opening for single din radio
- Includes 2 built-in coin holders
- Designed to fit with or without our Series 900 full dash
- Available in all colors (shown in dark wood grain)



AVAILABLE for E-Z-GO RXV, TXT, TXT 2015-up, Club Car Precedent, DS, Yamaha Drive, Star Car and equivalent

Protect lifted cart bodies and custom finishes from the hazards of rugged terrain with the original **GMT designed and manufactured FENDER FLARES.**

E-Z-GO TXT 2015-up
FRONT Flare

Club Car & Yamaha FULL Dashes



Club Car DASH

Yamaha Drive DASH

Yamaha '17 Drive DASH

Series 800 Club Car Precedent DOOR PANELS

Also Available for 2008-up

Series 800 Club Car Precedent **DOOR PANELS** saves on installation time over full dashes. Easily installed in the field - no need to remove factory key switch, oil/battery indicator light, cup holders, ball holder or steering wheel. Available in many color options.



Precision made GMT Locking **GLOVE BOX DOORS** cut installation time from as much as an hour to as little as a few minutes. Now available for Star Car and equivalent.

Another Great Idea From GMT.

Pictured right. Patent pending

Repairing a damaged Club Car Precedent rear body panel requires time consuming disassembly of the entire section of the cart. Installed on-site in minutes, automotive style GMT **BUMPER COVER** custom molded specifically for the Precedent model covers up frequently damaged rear body panels while providing added protection against future cracks, scratches and abrasions. Heavy duty plastic is substantially stronger, more durable than original equipment.



GMT
GOLF CART ACCESSORIES

THE VALUE LEADER IN CUSTOM ACCESSORIES. GMT delivers greater value through innovative design features. Automotive quality and precision, plus faster, easier installation. PROMPT delivery, most orders shipped SAME day from our large inventory.

All new patented design FENDER FLARES from GMT feature

- New underbody mount design
- Works well with standard or lift-ed car, approximately 2" wide
- Patented design maintains full wheel opening and factory body lines
- Installs in minutes with included hole templates and plastic push fasteners



E-Z-GO TXT 2015-up
REAR Flare

Check out GMT's New Patent Pending Design. Compact, Easy To Install Roof Mount Radio Consoles - Made In USA



E-Z-GO RXV G1



E-Z-GO RXV G1



Yamaha Drive

- Lower cost design compared to our full size radio console
- Compact, low profile unit is designed to fit tight against roof with less sight obstruction

Available for
E-Z-GO TXT, RXV (1st & 2nd Gen, roof)
Yamaha Drive, G22

All units available as a complete turnkey kit (radio, speakers and antenna) or speakers and radio may be purchased separately. Call for pricing.

Units available in all colors, Black, Dark Wood Grain, Carbon Fiber, Turned Titanium, Autumn Teak, Mahogany.

**Beware of cheap imitations
Accept only USA-made GMT products**

Select accessories now available in a variety of camouflage finishes.

CLUB CAR PRECEDENT BUMPER COVERS.



WOODY KIT. Series 1200

Available in Two-Tone finish only for Club Car, DS, Precedent, E-Z-GO, and Yamaha



OVERHEAD RADIO CONSOLES fit all major golf cars. Special features include: a unique underneath storage compartment, and a deeper configuration for simplified installation.



Series 1000



Series 400

Units now come with radio cutout and 5" speaker cutouts. Now available for Club Car Precedent, Yamaha 2003 and up and Yamaha Drive. Call about our new low cost, easy install radio consoles for E-Z-GO TXT, RXV, Yamaha Drive and G22.

**Custom Finishes
Including Camouflage
Now Available**

Dark wood grain

Carbon Fiber

Black

Camo

All GMT products are available in: Dark Wood Grain, Carbon Fiber, Woody, Autumn Teak, Mahogany, Turned Titanium, Black and Camouflage Finishes. Same day shipping on in-stock items.

**The world's finest
American made
custom golf car
accessory supplier.**

180 S Melrose Avenue Elgin, IL 60123

847-697-8161 • Fax 847-697-8176
www.gmtplastics.com

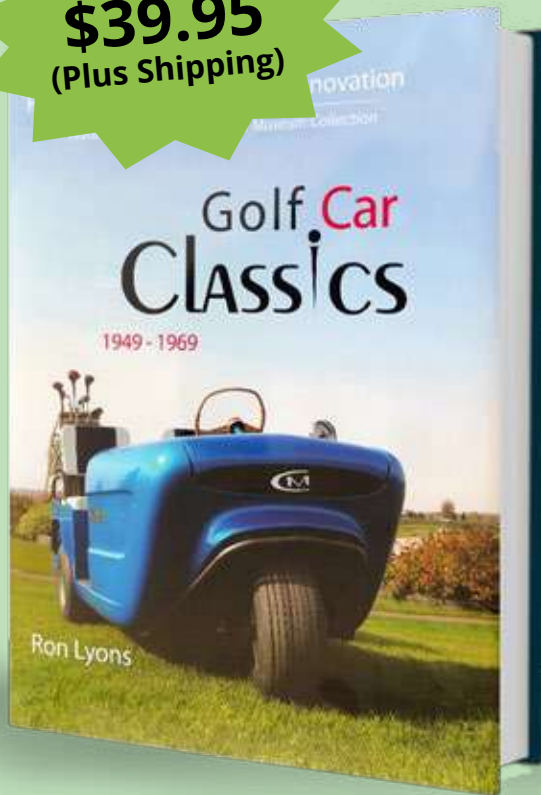
We accept:



Golf Car Classics

The #1 Hardcover Book
Documenting The
History • Design
Evolution • Innovation
Of Golf Cars Between 1949-1969
By Ron Lyons

Just
\$39.95
(Plus Shipping)



317 Full color glossy pages, hardcover

Vintage ads & photos

142 different companies
that have produced more than
200 different models

Available at
www.golfcaroptions.com

NEED BEER

A MUST FOR ANY SERIOUS GOLFER



* Comes with a large easy to attach clip to fit any golf bag.



DUAL PURPOSE - Microfiber golf towel will keep your clubs clean and most importantly help make sure you are never out of BEER!

Green side lets the Beverage Cart know that you need a BEER! The red side lets them know you URGENTLY NEED MORE BEEER!

Simply place your towel over the windshield to alert the cart girl that you guys need more BEER!

This automatically comes with a FREE BEER CHIP! See our website for Beer Chip Rules.

Vegas Golf the Game
www.VegasGolfTheGame.com



Wyoming Golf **CART** Laws & Regulations (What You Need To Know)

Among the 50 states in the country, Wyoming is one of the least populated.

However, residents here have many beautiful roads and fantastic scenery to enjoy.

And visitors or those who may vacation here may want to take a golf cart or a low-speed vehicle – which do differ – out for a spin.

Before you do so, you need to understand the rules and regulations that dictate their use fully.

How the Federal Government Regulates Cart Use

Currently, the federal government does not consider golf carts to be motor vehicles. There are a few reasons for this lack of interest.

First of all, golf carts are not capable of speeds of up to 20 miles per hour, as manufactured.

This means that they are not federally, motor vehicles, and cannot be regulated as such. Just as importantly, they do not pass federal guidelines for low-speed cars either.

Instead, the federal government lets states decide how they want to handle the demands of golf cart management within their borders.

Many of these states often allow municipalities or cities to control where carts can go and where they do not.

When this happens, a golf cart must follow not only federal rules – typically, only that they cannot ride on national or international highways – as well as state and local guidelines for golf cart use.

Those particular rules for Wyoming will be discussed in more depth later in this article.

For now, though, you must understand the guidelines necessary for low-speed vehicles at the federal level.

Currently, they ask that all cars of this type have headlamps, stop lamps, turn signal lamps, taillamps, reflex reflectors, parking brakes, rearview mirrors, windshields, seat belts, and a vehicle identification number or VIN.

All of these upgrades transform a golf cart into a low-speed vehicle.

And with this transformation comes a new set of laws and rules that you must follow.

Typically, states allow low-speed vehicles on more roads than they do golf carts.

The following details are split into two sections – golf cart rules in Wyoming and low-speed vehicle rules.

Fully understanding these aspects will keep your cart and LSV use legal and free from any complications.

Laws for Golf Carts on Wyoming Roads

Currently, Wyoming's golf cart laws are not as precise as they are in other states.

That said, they do have a few guidelines that dictate what they do consider golf carts or multipurpose vehicles. This latter vehicle type may be regarded as a golf cart in some limited circumstances.

So before we move on to much further, let's first see how Wyoming defines golf carts.

They state that golf carts are vehicles with at least three wheels in constant contact with the ground.

Four is typically preferable, but three-wheel golf carts do exist.

The cart also must have an unladen weight of fewer than 1,300 pounds.

Any more substantial and the cart may be qualified as a dif-

ferent type of vehicle.

Beyond that, the cart must be capable of speeds of no more than 15 miles per hour.

This restriction is more strict than that of the federal government.

That's because states can make rules more stringent than federal guidelines but not less complicated.

For example, golf carts in Wyoming must be capable of carrying no more than four people, including the driver.

Some states allow more passengers on carts, which varies depending on many different factors.

And golf carts are also designed to haul golf equipment and must be used to transport occupants to or from a golf course or may be used for special events or circumstances by a city or county.

These events must get an individual cart registration. And a multipurpose vehicle is one that has at least four wheels on the ground at all times and a weight of at least 300 pounds but no more than 3,000 pounds.

They must also have a permanent seat or saddle for the driver that is at least 24 inches from the ground.

These vehicles are often upgraded to become low-speed autos, which Wyoming allows on a variety of different roads.

As for golf carts, ask your local municipality about where you can ride, as each city has different guidelines to consider.

Guidelines for Low-Speed Vehicles

Low-speed vehicles need to meet the safety guidelines mentioned above to ride on any Wyoming state roads.

Unfortunately, the state has not published their laws online for more original research.

Based on common requirements, though, you can anticipate needing to get your cart registered and licensed before you can drive. You also need to have a driver's license to take it out on roads.

And most states will restrict low-speed vehicles to roads with speeds of up to 25 miles per hour or 35 miles per hour.

And many states allow cities to make rules for their paths.

So reach out to Wyoming DMV officials near you to learn more.

Federal Golf Cart Laws Click Here

Helpful Links

<http://www.dot.state.wy.us/driverservices>

Disclaimer

Because local and state laws can change, we recommend that you perform your research and check with your local municipality on rules as well.

AROUND *the* MARKETPLACE

VINYL SEAT REPAIR



from **Tear-Aid** | tear-aid.com

**** Vinyl and Vinyl-coated Seats ONLY ****

Vinyls have oils that are absorbed by most adhesives which causes the adhesive to turn gooey, gummy, and ultimately lose bond. Tear-Aid vinyl repair patches contain an inhibitor that blocks the oils found in vinyls resulting in a long lasting repair.

TEAR-AID® Repair Patches provide a simple and easy method of patching holes and tears, as well as an excellent protective film solution. Each TEAR-AID® Repair Patch is made from an exceptionally tough, matte finish, abrasion resistant, elastomer that resists puncture and tearing. It is combined with an aggressive adhesive formulated for high bond strength. Tear-Aid expands absorbing force on impact and always returns to original shape and size. This flexibility allows the patch to conform to irregular surfaces without restricting the movement of the repaired material. Buy it online!

PINK GOLF CART / ARIEL TUTU SWIMSUIT



from **Spearmint Love** | spearmintlove.com

For the little princess in your life!

This no-fuss swimsuit offers simplicity and style, making it a go-to option for beach or pool days. The Ariel Tutu Swimsuit's timeless style with an added tutu is perfect for endless splashes and sandcastle building. In addition to its trendy look, this swimsuit offers excellent UV protection.

Snap closure for easy diaper changes up to size 2 yr.

SIIX Collection swimwear is UPF 50+

Fabric: 81% Polyester 19% Spandex

Care: Machine wash cold on delicate or hand wash. Lay flat to dry.

Be sure to check out their web page **HERE** for more baby 'carting' apparel

THE SOCIAL

tagus!

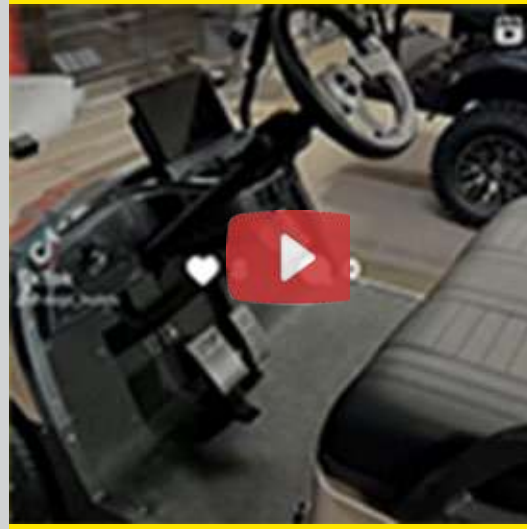
#GOLFCAROPTIONS on Instagram
and you just may see
yourself featured here



SCENE

INSTAGRAM REELS

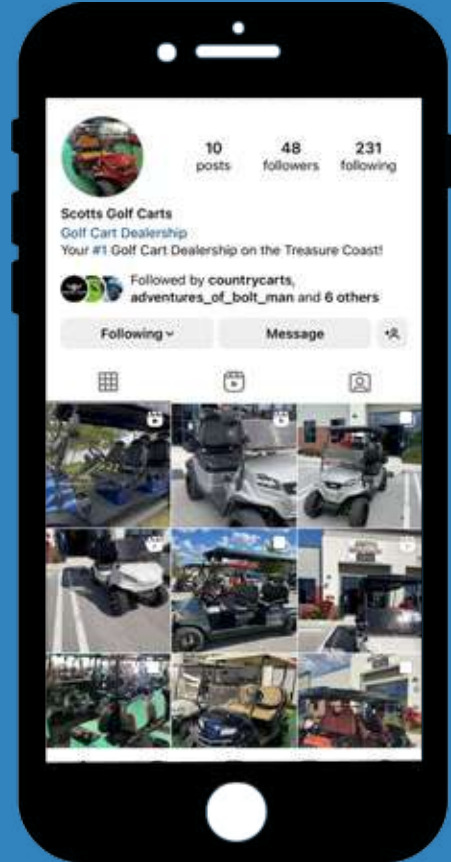
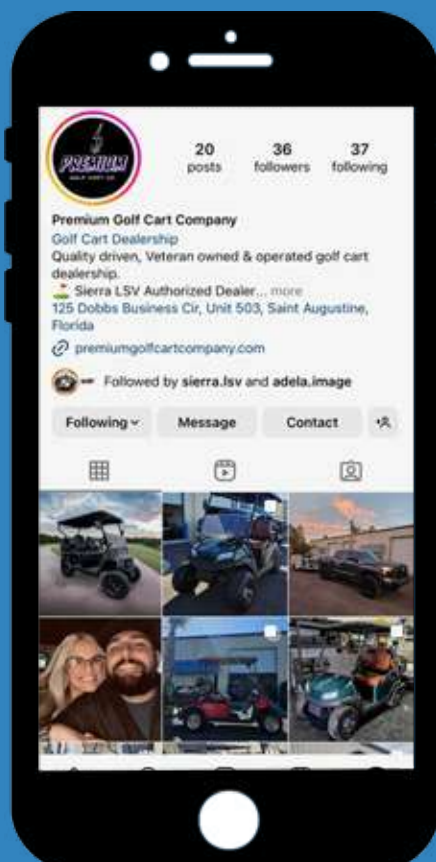
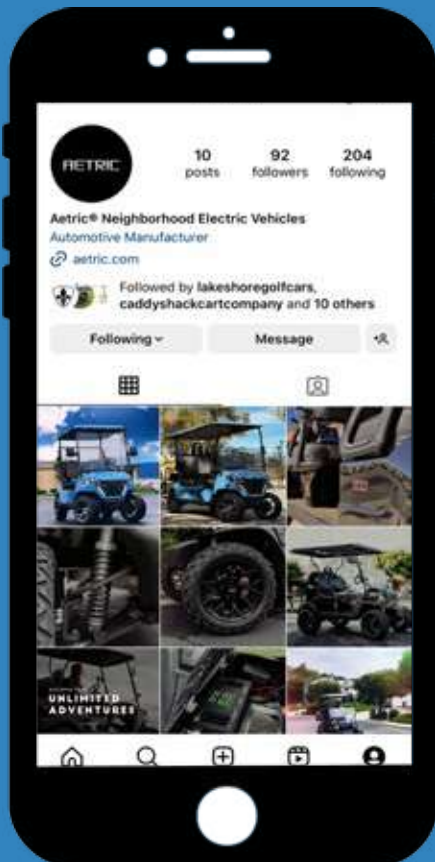
This Champagne I40 build (East Valley Golf Carts) was super fun to do. We hope to see you guys soon at East Valley Golf Carts to come get your new golf cart!!



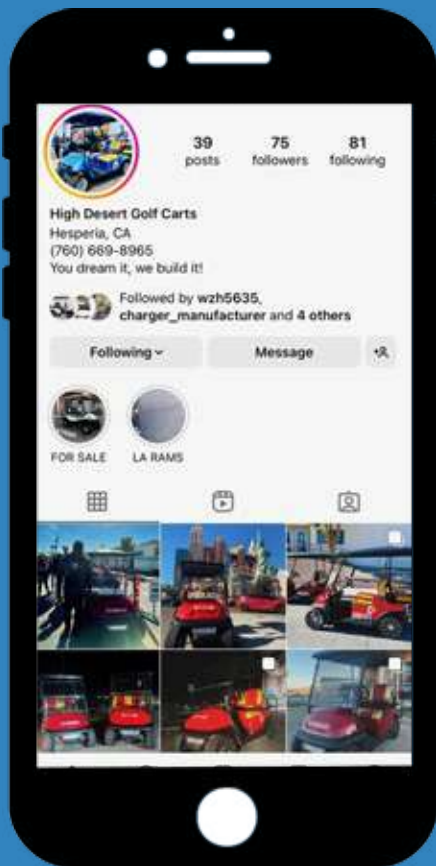
@aetricev

@premiumgolfcartco

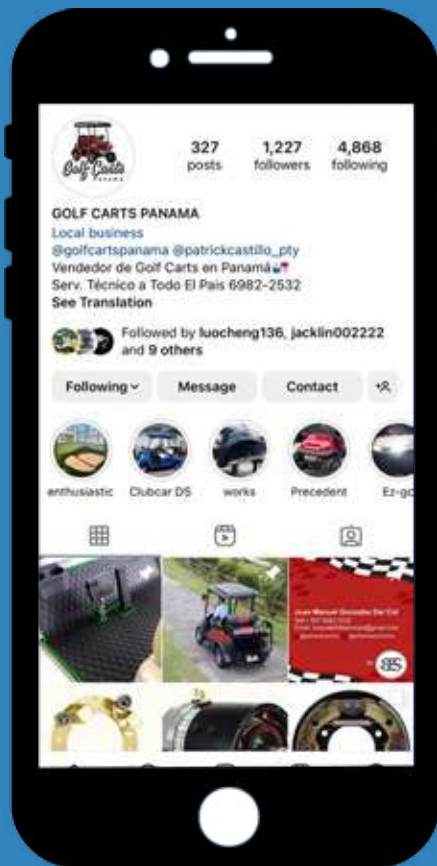
@scottsgolfcarts



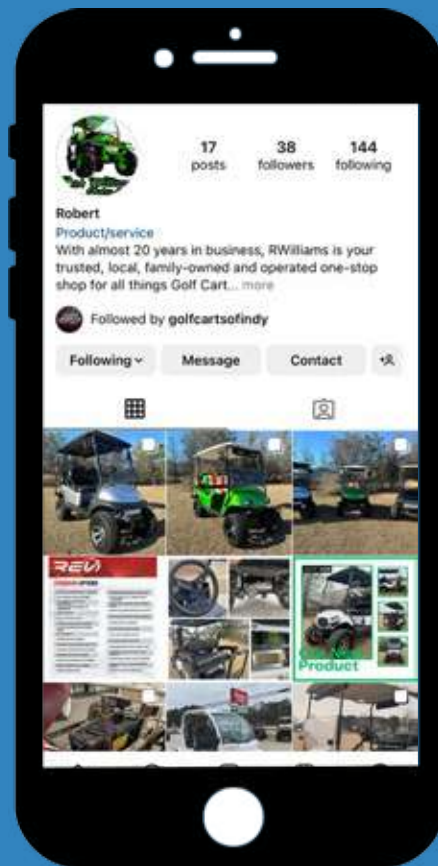
@highdesertgolfcarts



@golfcartspanamacity



@rwilliamscustomcarts



Golf Cart Wheelies

YouTube

Hold onto your hats, y'all! We're about to take you on a wild ride with our ridiculously awesome 2023 Navitas golf cart. This ain't your grandpa's golf cart - it's a whole new level of crazy! We've juiced up this bad boy with a 70v Eco Battery, a 5kw motor, and a Navitas 600amp controller. You won't believe your eyes when you see what this little beast can do!

▶ WATCH NOW

Golf Cart Groups You **SHOULD** Be FOLLOWING ON **FACEBOOK**



EVOLUTION SEAT KIT

PATENT PENDING



PARTS & PRODUCTS, INC.

Superior Durability & Custom Features:

- Aluminum Re-enforced Co-polymer Plastic Components
- E-Coated Aluminum or Steel Frame (Aluminum available for premium price)
- Enclosed Storage Compartment **(A)**
- 6 Built-In Cup Holders **(B)**
- Multiple USB Compartments **(C)**
- Folding Footrest **(D)**
- Seat Belt Brackets **(E)**
- 4 Tie-Down Attachment Points **(F)**

Available Accessories

- Removable Storage Bin
- USB Port
- Trailer Hitch
- Mounting Steps
- Golf Bag Holder
- Fishing Pole Holder
- Phone/Tablet Holder
- Specialty Seats
- Seat Belts
- Bolt-on Hanging Storage Rack



New
PRODUCT
AVAILABLE
MID-OCTOBER 2020



Made in America

NOT CHINA



www.EAGLEPRODUCTS.us

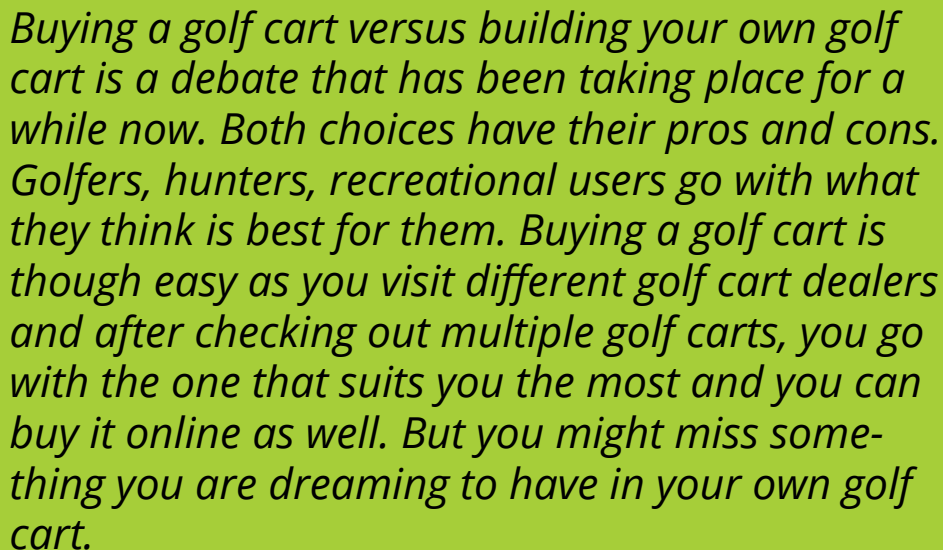
1.888.972.9911



PARTS & PRODUCTS, INC.

Helpful Tips

Why and How You Should Build Your Own Golf Cart?



Buying a golf cart versus building your own golf cart is a debate that has been taking place for a while now. Both choices have their pros and cons. Golfers, hunters, recreational users go with what they think is best for them. Buying a golf cart is though easy as you visit different golf cart dealers and after checking out multiple golf carts, you go with the one that suits you the most and you can buy it online as well. But you might miss something you are dreaming to have in your own golf cart.



On the other hand, many people prefer building their own golf cart over buying a golf cart. And to make your life easy an amazing software is available online. Build Your Golf Cart will help you in building your own cart. The complete customization option while building your own golf cart is the most popular reason why many people prefer this over buying a basic stock cart. You can make your golf cart as per your imagination, and that's the thing most people love about it. You can select any color that you like the most.

Moreover, you can also choose your favorite tires and much more while building your own golf cart. That's not over yet as you can also copy the look of some of the most expensive pre-made golf carts out there. Although these custom-built golf carts cost you way more than the normal ones, the nostalgic feel that they offer is unmatchedable.

The customization of golf carts lets you change the traditional style. You can make your golf cart look like a jeep, race car, or even like a mini cooper. More traditional changes are taking a used stock golf cart from a golf course and changing out the rims, body paint color, and seat to

fit your comfort and style. All these perks of the building of your own golf cart attract a lot of people.

Buying a golf cart looks easy, while building a golf cart may look like a hectic task. However, it's not that difficult at all. The first thing you need to do is order the necessary parts from various online and offline resources. This custom building of a golf cart takes some skill and time as well. Build Your Golf Cart is changing the dynamics.

Here are some of the basics when it comes to building your own golf cart.

THE BASIC TYPES OF EQUIPMENT YOU NEED FOR THIS ARE:

- A garage or shop to work in
- A tape measure
- A centrifugal clutch or power converter
- A motorcycle or lawnmower motor
- Some wrenches
- A screwdriver

All this equipment will help you out through this golf cart building process. You can also set up the motor with the help of these tools.

Here is the step-by-step guide in your journey towards making your own golf cart:

Continued on the next page >





GET A USED GOLF CART

This is the first step that you need to take while building your own golf cart. You can easily find a used, old golf cart from different golf-related groups or communities. However, not every golf cart brand works best for further customization. You shouldn't choose a used cart blindly.

So, what are the best brands and models which are ideal for custom built?

Well, you can go for E-Z-GO RXV, E-Z-GO TXT, Yamaha Drive 1, and Yamaha Drive 2. Moreover, check out the cart before buying, and make sure that you can easily create further improvisation on it without any hurdle.

So, coming to the question "How to build a golf cart?" Start with finding a used golf cart from any reputed brand. You can go for Club Car Precedent, Club Car Onward, E-Z-GO RXV, E-Z-GO TXT, Yamaha Drive 1, Yamaha Drive 2, ICON i20, STAR EV, or Tomberlin. There are several brands and models out there and you need to find the right fit for your choice.

GET OR BUILD A KIT OF YOUR OWN CHOICE

After buying the cart, the next thing you need to do is to build your own golf cart kit to disassemble the golf cart into different parts. This is a sensitive process and requires extra attention. Any damage to different parts can decrease the resale value. You can also buy a kit of your own choice from a website.

CLEANING

After disassembling the cart, you need to clean it well before putting any paint on it. There are different cleaning methods you can apply for this purpose. You can skip this process if the cart is in good condition.

MAKE THE NECESSARY WIRING

Electrical work and wiring is a core element of any motor vehicle. You need to make the necessary wiring for the different parts of your golf cart such as accelerator, radio, lighting, and audio. Alongside this, you also need to install the renewed rear axle. It's important to use quality material in all this making and installation to diminish the chances of any future problem.

MOUNT ENGINE

It is the easiest step of this whole process. You can use any type of motor engine such as a motorcycle engine or lawnmower engine with decent horsepower. Slide the engine in its desired place and tighten it up with the help of screws. Make sure that the engine is fixed tightly.

To avoid any rubbing of tires and suspension, leave some functional spaces on top of the hangers. It will provide adequate clearance at the front of the vehicle.

INSTALL NEW BRAKES

Used golf carts usually have weak brakes. So, it's better to replace the old brakes with the





new ones to avoid any accident. The installation of spindles, suspension, and shock absorbers is also a part of this step to make your ride more comfortable.

PAINT

Check out the body paint of the cart that you buy and ensure whether it is original or showered. If the paint is original and in good condition, it's better to keep it the way it is. However, if you feel the need to change it, you can go for changing the paint.

GRAPHICS

Graphics are the most appealing element of a golf cart. This is where you get more room to apply what you like the most. You can showcase your creativity with colors on a golf cart. It's always better to apply minor changes to the original graphics of the golf cart. It keeps an original feel. Otherwise, it will probably be criticized by the viewers. A light combination of different colors will be an ideal choice. Choosing a funky theme or design can make people laugh at your cart.

WHEEL INSTALLATION

After choosing the graphics, it is time to install the wheels. Wheel installation is

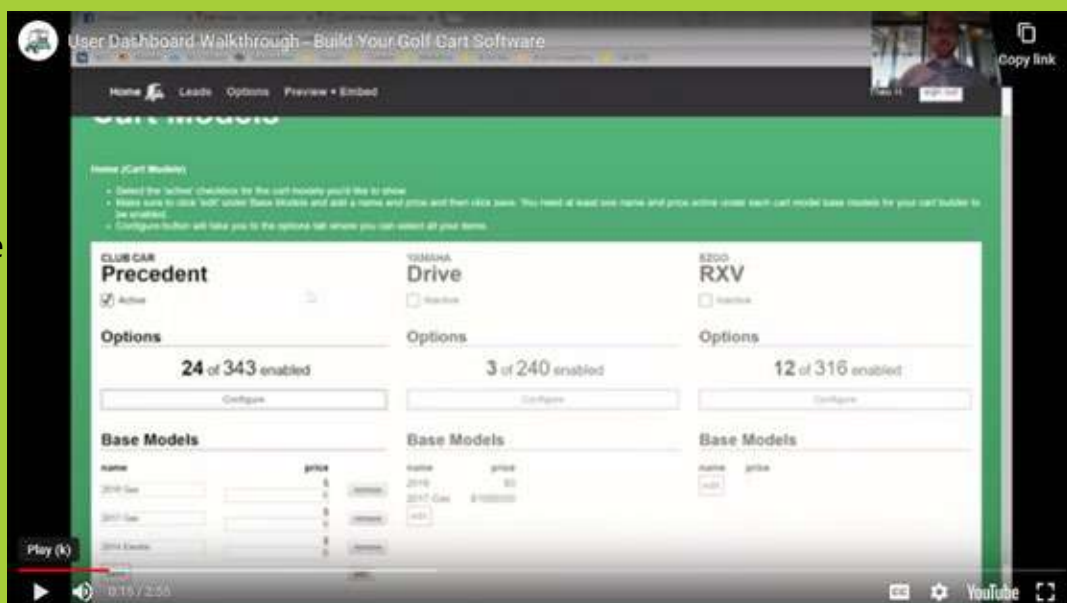
Reprinted with permission: <https://buildyourgolfcart.com/>

an easy process, and it will not take long. Before the installation process, select the best available tires and wheels that offer good performance and durability. Always choose those tires which provide extra traction to handle slippery surfaces.

ASSEMBLE ELECTRICAL COMPONENTS

This process takes place at the end. Assemble all the electrical components such as LED lights, speakers, and indicators. Maximize the brightness level to LED lights to increase visibility in gloomy weather.

Now, your custom-built golf cart is ready to ride on the golf course. Take necessary safety measures before moving it on the track. Online software **Build Your Golf Cart** is changing client's experiences and improving lives. We can say that BYGC will make your 2024 a bit better!



AROUND *the* INDUSTRY



SOUNDEXTREME

SoundExtreme Launches Industry's 1st Audio & LED Light Rocker Switches With Built-in RF Remote Control

Houston, Texas. - (February 6, 2024) - **ECOX-GEAR**, renowned for its innovative audio and LED solutions under the SOUNDEXTREME power-sports and marine brand, introduces three cutting-edge rocker switches designed to seamlessly control SoundExtreme audio and LED controllers. Whether you're gearing up for an off-road adventure with your SoundExtreme Elite soundbar on your UTV or enjoying the waves with SoundExtreme's tower speakers on your boat, these rocker switches enhance the user experience by simplifying device controls and bringing them front and center.

The Audio Rocker Switch Wireless Remote Control, similar to standard rocker switches, powers the connected product on/off. However, ECOX-GEAR aimed higher. "We noticed that competi-

tors' products were all generic on/off switches from the same factory with a different name," said Greg Fadul, CEO of SoundExtreme and ECOXGEAR. "It took us two years from conception to production to develop an elegant, easy-to-use next-generation switch. By embedding a wireless remote control inside, we provide full product control right on your dash, in the same space as a legacy rocker power switch." The audio rocker RF chip seamlessly works with SoundExtreme Marine Radios, Elite Soundbars, and Tower Speakers.

The LED Rocker Switch Wireless Remote Control gives users ultimate command over their SoundExtreme 4-Zone LED Controllers. Via the built-in RF chip, users can control brightness, speed, mode, and LED lighting scene selection, as well as power the controller on or off with its integrated switching power wire.

The Bluetooth Receiver Rocker Switch Remote

SOUNDEXTREME - CONTINUED

Control offers marine-rated Bluetooth control, facilitating pause, play, track navigation, and volume adjustment on smartphones. With stereo RCA outputs, it seamlessly connects to SoundExtreme amplifiers, as well as other brand amplifiers or audio devices with aux or RCA inputs. Boasting Bluetooth 5.1 support with up to a 100-foot range and dual simultaneous smartphone connections, this device provides enhanced connectivity options.



All three devices feature snap installation into standard Carling rocker switch cutouts and IP66 water, dirt, and dust ingress protection, ensuring durability in the most challenging environments.

The rocker switch remote controls are available on [www.](http://www.soundextreme.com)

[soundextreme.com](http://www.soundextreme.com), ranging from \$69.99 to \$99.99.

About SoundExtreme by ECOXGEAR: Based in Houston, Texas, SOUNDEXTREME provides a family of 100% waterproof outdoor audio and LED light solutions with the highest levels of quality, support, and service. SOUNDEXTREME

sells its products through major retailers, dealers, and distributors throughout North America. To learn more about SoundExtreme by ECOXGEAR products please visit them at www.SOUNDEXTREME.COM.

JAKE'S GOLF CARTS

JAKE'S GOLF CARTS JOINS HIGH LIMIT RACING AS OFFICIAL PARTNER, CREATES FASTEST LAP AWARD

High Limit Racing is proud to welcome Jake's Golf Carts as the newest Official Partner of the series in 2024.

Located in McVeytown Pennsylvania - yet servicing happy customers nationwide - Jake's Golf Carts is a premier Club Car Authorized Dealer. Jake's stocks and services hundreds of carts and personal transportation vehicles for your personal and commercial needs and are manufactured by the biggest, best, and most reliable name in the industry.

As an official partner in High Limit Racing's inaugural nationwide campaign, they'll sponsor the Jake's Golf Carts Fastest Lap Award - rewarding the driver with the quickest lap time in the A-Main a nightly bonus at every event.

Jake's Golf Carts will also award a custom-wrapped golf cart to a High Limit Racing team at the championship banquet.

To learn more about Jake's Golf Carts, visit www.jakesgolfcarts.com.

The High Limit Racing season fires off on Monday, February 12 at East Bay Raceway Park in Tampa, Florida. The 59-race nationwide season will conclude with a two-day finale at The Dirt Track at Texas Motor Speedway on October 11 and 12. Tickets for select events are now available at <https://bit.ly/4b1Ov3N>.

Make sure to follow @HighLimitRacing on X, Facebook, and Instagram.

Unable to attend the track? You can stream every High Limit Racing event live on FloRacing. If you're not a FloRacing subscriber, you can sign up today at FloRacing.com/highlimit.

CLUB CAR

BACK IN BLACK



Check out the Eclipse Special Edition Onward!

Equipped with exclusive, premium accessories and available in high-performance power options, the Eclipse SE is ready to ride in style this spring. Unique aesthetics with Matte Tuxedo Black paint, carbon-fiber grill inserts and exclusive Special Edition decal.

**ECLIPSE
DETAILS**

**FIND A
DEALER**

PRE OWNED

**BUILD YOUR
ONWARD**

UPGRADE TO A CLUB CAR FOR ONLY \$7,500!

Club Car's Certified Pre-owned vehicles often last for decades, making them the ideal choice for those on a budget! Explore your options and learn more by clicking the link below!

PREMIUM UPGRADE

Looking for something on the high-end? We've got you covered.

The Onward Li-Ion XR is the perfect car for drivers looking to take their neighborhood experience to the next level. Go further, faster with increased torque, hill-climbing power, and battery longevity.

Customize your Onward with dozens of color, seat, and wheel options. Or check out our Special Editions for vehicles that have a totally unique look!

RED HAWK

RED HAWK DEBUTS NEW, CUTTING-EDGE TITAN COMPLEX

NASHVILLE – Red Hawk, a subsidiary of Arrowhead Engineered Products, announced a shift in strategy toward a centralized distribution model, consolidating its geographically diverse warehouse network into a state-of-the-art, custom built mega-facility. The 540,000-square-foot complex earned the name "Titan" for its physical size, the impressive scope of its capabilities, and its Portland, Tennessee location.



RED HAWK - CONTINUED

The advances Titan offers will allow Red Hawk to optimize costs, capital, logistics, and inventory, translating to a stronger value proposition for customers. "Titan was designed from the ground up to dramatically reduce the complexity in our supply chain," said Connor Herr, Group President, Engineered Products.

"This will maximize our operational efficiency, allowing us to better serve the needs of our dealers now, and to lead our industry into the future."



Hawk distribution centers in the coming months. "What we give up in proximity to our dealer network, we make up for in terms of speed, accuracy, efficiency and right-sized

inventory," said Red Hawk sales manager Charlie Neuman. "Streamlining logistics to have all the elements of a customer's order coming out of the same location will yield many benefits, including faster turnaround and fewer backorders."

Titan will be more than a distribution center. The complex will also include photography and videography studios plus modern workspaces for a variety of functions, including IT, finance, engineering, product testing and technical support.

Red Hawk anticipates orders beginning to ship out of Titan on or around April 1, 2024.

ALLIED BATTERY

THERE'S A LOT NEW GOING ON AT ALLIED BATTERY!

If you haven't heard, we are offering free shipping on all orders - including drop ships for our dealers! No LTL, liftgate, residential or other upcharges - you pay for the top rated Allied product - we take care of the rest!

The new pricing applies to any quantity, whether you are stocking up for the season at your dealership, or just need a single battery. Enjoy the convenience and cost savings of free shipping to your business or directly to your customer.

NEW ALLIED "ICON" SCREEN

We have also just released our brand new Allied State of Charge

Meter w/ Speedometer, compatible with all of the current-gen Allied Battery products, and all legacy Allied products with a CAN-Bus port!

Become an **ALLIED DEALER**

Contact your local **ALLIED REP**



BINTELLI

GOLF CART MANUFACTURER INVESTING \$4M, ADDING 67 JOBS

Bintelli, an industry-leading low-speed vehicle (LSV) company, will open an assembly and distribution facility in the River Ridge Commerce Center to produce electric golf carts and other low-speed recreational vehicles. Bintelli will invest over \$4 million into the region by leasing and improving a building in River Ridge and adding new furniture and fixtures. The location will also have up to 67 new jobs with an average wage of over \$26.00 per hour, with the company providing training for each employee.

Bintelli started as the dream of Justin Jackrel in 2000, and the company has quickly grown to be an industry standard. The company currently has the largest LSV assembly facility in the United States in South Carolina and is also a five-time Inc. 5000 company. Their products include golf carts, electric bicycles, scooters and mopeds, parts, and accessories created from quality craftsmanship.

"Bintelli's explosive growth over the last few years has been extremely rewarding," said Justin Jackrel, President of Bintelli. "We couldn't be more excited to expand our operations with this new facility at River Ridge Commerce Center, thanks to PRG Commercial Property Advisors and Avison Young for their comprehensive site selection and brokerage services. The proximity to our new logistics partner, Mister "P" Express, played a big part in choosing this location for our new assembly facility. We look forward to opening our newest expansion and working with such amazing new regional partners."

"From one successful American Dream story to another, Mister "P" Express is thrilled to welcome Bintelli as our neighbor at River

Ridge Commerce Center," said Cindy Collier, President & CEO at Mister "P" Express, Inc. "Bintelli's expansion from South Carolina to River Ridge is a strategic move for the company's continued growth, while also bringing a tremendous economic impact to our community. We can't wait for our shiny, red 18-wheelers to haul the nation's best electric golf carts, bikes, and gas mopeds all across the country."

Based on the company's job creation plans, the Indiana Economic Development Corporation (IEDC) committed an investment in Bintelli of up to \$675,000 in the form of incentive-based tax credits. These tax credits are performance-based, meaning the company is eligible to claim incentives once Hoosiers are hired.

"We are excited to welcome another innovative, fast-growing company to the state," said IEDC Chief Strategy Officer Ann Lathrop. "Here in Indiana, Bintelli joins a robust network of quality manufacturers and a state-wide ecosystem committed to advancing a business climate that powers the growth and talent needed to succeed."

"The City of Jeffersonville is excited that Bintelli has chosen the River Ridge Commerce Center as the location for their newest facility," said Jeffersonville Mayor Mike Moore. "This strategic investment into our community will add 67 new jobs as well as position Bintelli and their premium recreational vehicle products for long-term success in this growing sector."

"We want to welcome Mr. Jackrel and his team at Bintelli. Their investment showcases the strategic advantages offered by River Ridge and Southern Indiana," said Jerry Acy, the executive director of the River Ridge Development Authority. "Bintelli has proven itself to be an industry leader in the rapidly growing recreational low-speed vehicle mar-

BINTELLI - CONTINUED

ket and we are excited to partner with them as they grow here at River Ridge."

"Bintelli brings a unique product to Southern Indiana and the surrounding regions," said John Launius, Vice President and Director of Economic Development at One Southern Indiana. "Based on the growth that Bintelli has seen over the years, we are thrilled to have them in the region and can't wait to watch their continued success as an industry leader."

Visit them at www.bintelli.com.



ASIA-PACIFIC GOLF CART MARKET

ASIA-PACIFIC GOLF CART MARKET SIZE, SHARE & TRENDS | 2030

Based on Inkwood's report, the Asia-Pacific Golf Cart Market, spanning countries including China, Japan, India, South Korea, Indonesia, Thailand, Vietnam, Australia & New Zealand, and the Rest of Asia-Pacific, is poised for significant growth with a projected Compound Annual Growth Rate (CAGR) of 6.04% in revenue during the forecast period from 2022 to 2030. Major players such as Club Car, Cruise Car Inc, E-Z-GO, and others are driving this expansion.

Refer to the Report Summary Here: https://inkwoodresearch.com/reports/asia-pacific-golf-cart-market/#report-summary?utm_source=PaidPRNew&utm_medium=OpenPR&utm_campaign=InkwoodPR

paigh=InkwoodPR

The market size of the Asia-Pacific Golf Cart sector is expanding rapidly, propelled by increasing participation in golfing activities, growing popularity of golf tourism, and rising disposable incomes across the region. Key trends include a shift towards electric golf carts, driven by environmental concerns and advancements in battery technology, leading to the emergence of the golf cart battery market as a significant segment within the industry.

Notable market trends also include the introduction of innovative features and accessories aimed at enhancing the performance, comfort, and convenience of golf carts. Companies are investing in research and development to produce the fastest golf carts

on the market, catering to the preferences of avid golfers seeking high-speed and efficient transportation on the course.

Moreover, the Asia-Pacific Golf Cart Market is witnessing increased demand for golf cart rentals, especially in tourist destinations and golf resorts, driving market growth and creating lucrative opportunities for rental businesses.

As the market continues to evolve, major players are focusing on strategic partnerships, mergers, and acquisitions to strengthen their market presence and expand their product portfolios. Additionally, collaborations with golf clubs, resorts, and event organizers are being leveraged to promote the use of golf carts and drive market growth further.

CLUB CAR

CLUB CAR ENHANCING RECRUITING RELATIONSHIP WITH AUBURN ENGINEERING

For today's engineering students, co-ops and internships continue to be an essential part of a well-rounded education. Club Car, a manufacturer of electric and gas-powered golf carts and small utility vehicles, is committed to providing students with the best opportunities to gain just that.

"Club Car is committed to workforce development and cultivating the talent to support innovation and growth in our industry," said Dan Schmidt, vice president of engineering and technology at Club Car. "Our partnership with the Samuel Ginn College of Engineering at Auburn University has been a tremendous success. Auburn Engineering students come to us ready to work and eager to bring fresh ideas to our business. We value the opportunity to provide hands-on experience and to develop future leaders in our industry."

Jeremy White, '02 mechanical engineering and the design and prototype technologies leader at Club Car, said the goal of this partnership is to provide students with real-world workplace experiences.

"We're a large company with a small feel," he said. "We pride ourselves in letting students be actively involved in projects and to apply what they've learned. We use our co-op students in a real engineering environment and I think it gives them a good idea of what they'll be doing in their careers."

Students on co-op with Club Car rotate through different roles during each semester with the opportunity to work in test engineering, product design and more. The ultimate goal, White said, is that by their last rotation, they can work



The Club Car and CDCR teams pose in a golf cart provided to the team by Club Car

in an area where they have developed a special interest.

Jesvin Joseph, a junior in computer engineering from Kerala, India, is one student who has benefitted from Club Car's increased co-op

efforts. Joseph has already finished his first two rotations with Club car in Augusta.

"I learned many professional skills during my co-op period including professional communication, analytical skill, exposure to business side of an industry, working in a team environment, public and client interactions, time management, problem solving approaches and methodologies and so on," Joseph said.

Club Car's relationship with Auburn Engineering is rooted in the Office of Career Development and Corporate Relations (CDCR).

"In the last few years, Auburn Engineering has created a strong recruiting partnership with Club Car, who is a leader in best recruiting practices," said Apryl Mullins, the assistant director of corporate relations in CDCR. "They have provided meaningful work experiences for co-op students, sponsored capstone engineering projects in Electrical and Computer Engineering, and have attended several recruitment events such as career fairs and table talks, showcasing their golf carts on campus as a show-and-tell of the great work they are doing in the industry."

"We've had a lot of awesome success here," White said. "There are plenty of schools that have co-op programs, but I don't think that we've found another university that is as dedicated and focused as Auburn."

WETSOUNDS

PREPARE TO ILLUMINATE THE NIGHT WITH OUR ZR LED RINGS

Enhance your ZERO Series™ coaxial speakers and subwoofers with the new cutting-edge Wet Sounds ZR LED Speaker Rings!

Empowered by the ability to choose from multiple color options, creating flawless accent lighting perfect for any mood or environment. Crafted from premium materials and engineered for a smooth integration between your speaker and mounting surface, these rings redefine sophistication



and style to complement your audio system. ZR LED Rings come with pre-installed LED's and are available in multiple sizes, 6.5" & 8" as pairs, as well as 10" & 12" singles.

Have questions or need assistance in selecting the right products for your dealership? Our knowledgeable team is here to help. Call 877-938-7757 X 1 or visit www.wetsounds.com.

KANDI AMERICA

KANDI'S NEW COLLAPSIBLE ELECTRIC GOLF CART IS THE LATEST TINY EV COMING FOR YOUR NEIGHBORHOOD

Kandi America's new collapsible mini golf cart is trying to reframe the concept of low-impact urban transportation.

This tiny little golf cart features many of the same components you'll find on a traditional cart, including front and rear seating, cup holders, independent double A-arm suspension (at least in the front), seat belts, and even a frunk for up-front storage.

But unlike larger golf carts, this pint-sized version is just a two-seater and comes in a much more compact form factor. Not only is it already physically smaller than typical carts, but it shrinks its wheel-

base at the push of a button to take up even less space when parked. The little cart is just under 8 feet long when fully deployed for driving, but shrinks down to under 5.5 feet when collapsed. It's also a mere 35 inches wide, or just under 3 feet.

It's also significantly lighter than a typical golf cart, tipping the scales at just 265 lb (120 kg). That's less than a third of the golf carts you see every day.

And the best part is probably the price. If you haven't checked lately, today's golf carts are insanely expensive. If you've driven away from a golf cart dealer without breaking five figures, you've performed a rare feat. \$12,000 golf carts are the norm, and the prices go up quickly from there. But this little guy? It's priced at a cool US \$4,999.

The little buggy doesn't have a very powerful motor (between 1-5 kW depending on which spec sheet you read) or a very fast top speed (9 mph/ 14.5 km/h), but it has a decently long range of 25 miles (40 km). With a 1.8 kWh lithium-ion battery that charges from a typical 120V AC wall outlet, that range is likely enough for most neighborhood cruisers.



MAGAZINE advertising WORKS



- Magazines rank 31 out of all 16 media in terms of giving consumers a positive impression of advertising.
- The degree to which readers recall ads in magazines has increased by 6 percent in the last five years.
- The number of readers who took action after viewing a specific ad has increased by 10 percent in the five years.
- Fifty-six percent of readers took action as a result of viewing a magazine ad.

*Sources: Yankelovich; Affinity's VISTA Print Effectiveness Rating Service (2 and 3); VISTA Norms and Starch Adnorms

Magazines create relationships, which in turn increase sales. Shouldn't you be part of this equation?

Golf Car Options • www.golfcaroptions.com • info@golfcaroptions.com

GolfCartDog.com



K9 CoPilot & "K9Caddy"

Safety Leash Systems
for Golf Carts & ATVs

\$10 OFF! USE CODE: **K9C**

the "Complete" Golf Cart Dog K9Caddy Assembly"



Driving the Future!

**SALES, SERVICE,
PARTS, RENTALS**

GOLFCARTPEOPLE.COM

780-430-0400

5525 92ST EDMONTON, AB



MANUFACTURERS

Are you a golf cart manufacturer and would like to be listed? Contact us at info@golfcaroptions.com

Manufacturer	Website
American Custom Golf Cars	acgcars.us
Advanced EV	advancedevusa.com
Aetric NEV	hahmev.com
AGT Electric Cars	agtecars.com
Alset EV	alset-ev.com
American Landmaster	americanlandmaster.com
Arcimoto Electric Vehicles	arcimoto.com
Atlas Carts	atlasarts.com
Atomic Electric Vehicles	atomicelectricvehicles.com
Ayro	ayro.com
Beast 48	beast48.com
Bremark EV	bremarkev.com
Bintelli Electric Vehicles	bintellielectricvehicles.com
Caddyshack Golf Carts	caddyshack1.com
Cazador Motorsports	cazadormotorsports.com
Club Car	clubcar.com
Cricket Mini Golf Carts	cricketminigolfcarts.com
Cruise Car	cruisecarinc.com
Denago EV	denagoev.com
Drake Golf	drakegolfcarts.co.za
Dr Golf Carts	drgolfcarts.com
Dynamic Carts	dynamiccarts.com
Eagle Products	eagleproducts.us
Ellwee	ellwee.com
eNVy	envygolfcart.com
Epic Carts	epiccarts.com
EV Titan	evtitan.com
Evolution Electric Vehicles	evolutionelectricvehicle.com
E-Z-GO Textron	ezgo.txtsv.com
Garia	garia.com
GEM by Waev	gemcar.com
Getgo	getgo.net.ph
Goggo USA	goggocar.com
Green Machine Carts	greenmachinecarts.com

To See A Preview of One of the Manufacturers Carts Visit www.golfcaroptions.com

Manufacturer	Website
Honor LSV	honorlsv.com
HuntVE	huntve.com
Icon Electric Vehicles	iconev.com
Inno Golf Carts	innogolfcarts.com
Iron Bull Carts	ironbullcart.com
Italcar Electric Vehicles	italcar.com
Kandi America	kandipowersports.com
Kodiak EV	drivekodiak.com
Legion EV	legionev.com
MadJax	madjax.com
MammothEV	mammothev.com
Maxxlt Motors	maxxitmotors.com
MD Carts	md-carts.com
Mobi G	mobigolfcart.com
Moke	mokeamerica.com
Momentum Motorwerks	momentummotorwerks.com
My Electric Vehicle	myelectricvehicle.org
Neo EV	neoev.com
Olympus LSV	olympuslsv.com
PilotCar EV	pilotcarev.com
Quickie Carts	quickiecart.com
Royal EV	royal-ev.com
SC Carts / NXT	sccarts.ca
Spartan EV	spartanev.com
Spree Golf Car	spreegc.com
Star EV	starev.com
Streetrod Golf Cars	streetrodgolfcars.com
Sunday Carts	sundaycarts.com
Sune Carts	sunecarts.com
Titan EV	titanevusa.com
Tomberlin USA	tomberlinusa.com
Trojan EV	trojanev.com
United Smart EV	unitedsmartev.com
Vantage Tag	vantage-tag.com/products
V Carts	vcarts.com
Venom EV	venom-ev.com
Viking EV	viking-ev.com
Voyager Electric Vehicles	voyagerelectricvehicles.com
Yamaha Golf Car	yamahagolfcar.com
Ziggy Wheels	ziggywheels.com

AROUND *the* COURTS

Yamaha Faces Trial Over Golf Car Rollover Crash That Injured Georgia Toddler

Marietta, GA— Attorneys Tuesday debated what caused a golf car rollover crash that seriously injured a Georgia child, as trial opened against the vehicle's maker, Yamaha Motor Manufacturing Corporation of America. Hall v. Yamaha Motor Manufacturing Corporation of America, 20-A-1696.

The May 2018 crash occurred as the child's father, Brooks Hall, was driving the 2013 model Yamaha G29 "Drive" downhill, and applied the brakes to stop for a car turning ahead of him. The child's family says the vehicle, equipped with a rear, two-wheel braking system, fishtailed and then flipped, dragging the child, who was three at the time, along the road, with the vehicle's weight on top of her.

The child suffered a range of injuries including scarring across her head and body, incurring more than \$400,000 in past medical expenses alone, according to court documents. The child's mother, plaintiff Suzanne Hall, is seeking both compensatory and punitive damages for the incident.

During Tuesday's openings, Hall's attorney, Bayuk Pratt's Frank Bayuk, walked jurors through the incident involving the golf car, which some call a "golf cart." He said evidence would show the vehicle's braking system was defectively designed, ultimately leading to the rollover.

Bayuk told jurors that Yamaha never tested the vehicle's braking system when being driven downhill, despite knowing the brakes would be used on roadways and in such situations, and despite knowing of similar rollover incidents. Bayuk added that evidence would show that a four-wheel braking system, which Yamaha had the ability to include on the vehicle, would have

prevented the incident.

"For years, before May 2018, Yamaha received multiple injury claims caused by downhill-braking rollovers of the Drive," Bayuk said, "but did nothing to fix this defect to protect [the child] or all of its other customers."

But Yamaha contends the braking system is safe and that the way the golf car was driven, combined with after-market modifications to the vehicle, ultimately caused the accident.

transportation-trials-cvn-video-library-subscribe-to-watch

On Tuesday, Weinberg Wheeler Hudgins Gunn & Dial's Frederick Cooper IV told jurors that a prior owner of the golf car modified the vehicle before selling it to the Hall family. Cooper added evidence would show that those modifications, which were never approved by Yamaha and which violated safety standards, made the vehicle faster, heavier, and less stable.

And Cooper added evidence would show the child's father was driving too fast downhill and not paying attention to the car in front of him just before the crash.

"Had he been paying attention, the evidence will show he had plenty of time and distance to stop without slamming on the brakes at high speed," Cooper said. "But he wasn't paying attention."

Trial, before Cobb County (Georgia) State Court Judge Diana Simmons, is expected to last into next week. CVN is streaming the trial gavel-to-gavel and will provide updates via its news page.

Motor RPM & Speed Calculator

SHELBY CONTROL SYSTEMS

<https://gaminde.net/speed-calculator.php>



This interactive Speed Calculator will allow you to check what the top speed of your cart should be with all the different speed codes.

In addition, it will allow you to input the max rpm's of any motor and you can determine what speed your cart will achieve.

Don't Forget To Check Out Our Controller Rebuild/Repair Page!

FANTASY CUSTOM GOLF CARTS

419-215-7417



**5559 W Alexis Rd
Sylvania, OH 43560**

SALES

SERVICE

PARTS

ACCESSORIES



We pride ourselves on creating high quality, truly unique custom golf carts and providing top notch customer service. Stop in and let us build you the cart of your dreams!



From Basic to Way Beyond We Build it All



Ask us about our bluetooth sound systems!



www.fantasycustomgolfcarts.com

facebook.com/fantasycustomgolfcarts

classified/ads

JasonsGolfCarts.com
Best Selection/Best Prices

[SHOP NOW ►](#)



 **BUILD YOUR GOLF CART SOFTWARE**

Mark Haugstad
owner

612-584-0233
mark@buildyourgolfcart.com
www.buildyourgolfcart.com

BYCC Software Web App - Lead Generating Tool
Website Development | Web Maintenance
Web Hosting & SSL | Website Health Reports
Search Engine Optimization

Daren Anderson
FOUNDER

910-724-3412
Daren@andersongolfdideas.com
PO Box 4586
800 St. Andrews Dr. Suite 221
Pinehurst, NC 28374



GolfCartDog.com

 **"K9Caddy"**
Safety Leash System
&
K9 CoPilot
Seat Restraint System

*Pet Safety Options
for Golf Carts & ATVs*

by TMS-LLC

GREAT DAY, INC.



Ilar Paul Meeks
President

ipmeeks@greatdayinc.com
(318) 574-5003 ext131
Toll Free: 1-866-649-1918
Cell: (601) 630-7792
www.GreatDayInc.com
604 Kimbrough Dr. Tallulah,
LA 71282



**Golf Cart Chronicles - Books 1, 2 & 3
Available on Amazon**

CONVERTED C CARTS

You Deserve to Look Good in Your Golf Cart!

www.ConvertedCarts.com



GOLF CAR GRAPHICS .COM

To place a \$25/month ad contact info@golfcaroptions.com

FROM CONCEPT TO COMPLETION, *Suite Seats* HAVE THE
Fastest **DELIVERY TIMES**



IN THE INDUSTRY

MOST CUSTOM ORDERS SHIP IN **10 DAYS OR LESS!**
TIME IS MONEY, HOW MUCH ARE YOU SPENDING ON YOUR CUSTOM SEATS?




Suite Seats[®]
CUSTOM GOLF CAR SEATS

SCAN HERE 



2009 N BROADWAY, NEW ULM MN 56073 • 507.359.2277 • UCUINC.COM

*No Custom
is
Complete*



*Without
a*

LAZYLIFE SEAT

www.lazylifeseat.com