

Golf Car **OPTIONS** Magazine

28
pages

Of PGA Show Content



The All New Atlas **ONE**
See page 12

GROW WITH BINTELLI



BECOME A DEALER



Isn't it time you experienced
the best LSV dealership
program in the industry?

SCAN NOW & LEARN HOW

Be a part of Bintelli's authorized dealer network and capitalize on the strength of a premium brand built on 25 years of industry leadership.



STRONG PROFIT MARGINS



READY TO SHIP INVENTORY

Add our award-winning company to your dealership and get:

- ✓ Warranty, marketing, and dealership support you can count on
- ✓ Turnkey, fully-assembled, and street-legal in all 50 states
- ✓ Showroom & marketing materials are provided free with first order
- ✓ Nationwide lead generation to drive traffic to your dealership
- ✓ Flexible wholesale program



BINTELLI™

bintelli.com/become-a-dealer
(843) 920-2580



E C O B A T T E R Y

ECOSY

THE BEAUTY IS IN THE CONNECTION

The Eco Battery EcoSystem unifies advanced engineering and modern technology into a single, seamless platform, delivering the industry's strongest combination of integration, performance, safety, and control. Instead of piecing together systems from multiple manufacturers, the EcoSystem creates a true 360° experience for golf carts.

- **Best-in-class drivability** with a perfectly matched controller and motor
- **Proven lithium power** paired with the most advanced BMS in the industry
- **Trusted by more new cart OEMs** than any other lithium battery solution
- **Premium upgrades for older models**, bringing modern tech to the most iconic Big-3 carts



+ E B P O W E R

SYSTEM

**ONE SYSTEM.
ONE COMPANY.
ONE SOLUTION.**

Contents...

February, 2026

Atlas ONE Redfines What a Golf Cart Can Be / [12-15](#)

PGA Show News / [22-23](#), [32-33](#), [36-41](#),
[50-51](#), [60-62](#)

Traction By Michael Alexander / [28-29](#)

PGA Show Directory / [70-77](#)

Meet the Tee-Z11 from Caddyshack / [39](#)

Beyond The Gated Community / [44-46](#)

LSVDA: Driving Forward / [54-59](#)

Dealer Profile / [98-100](#)

Technology Meets Golf Car / [102-104](#)

Plugged In:
LSV/Golf Cart Energy Trends / [110-114](#)

DEPARTMENTS

Classified Ads / [138](#)

Golf Car/LSV Manufacturers Listing / [136-137](#)

Around The Community / [80-82](#)

Around The Courts / [18](#)

Around The Industry / [124-132](#)

DEPARTMENTS

Around The Marketplace / [86-88](#)

Around The World / [92-93](#)

Service, Repair & Maintenance / [120-123](#)

The Social Scene / [116-118](#)

Wacky World of Golf Cars / [106-107](#)

PROGRESSIVE®

DRIVE LIKE IT'S PROTECTED

1-800-PROGRESSIVE / [PROGRESSIVE.COM/GOLF-CART](https://www.progressive.com/golf-cart)



*Liability coverage for one golf cart, excluding state fees and taxes. \$75 premium not available in MA. Progressive Casualty Insurance Co. & affiliates. Coverage subject to policy terms. Prices vary based on how you buy.

With Golf Cart basic liability coverage for as little as \$75/year*,
you can explore the neighborhood with confidence, knowing you're
prepared for the good times and when you need insurance too.

Quote online in as little
as three minutes



Get the Best Track-Style Enclosures!



Become an



Authorized
Dealer

AVAILABLE FOR:

ADVANCEDEV
CLUB CAR
EPIC
EZGO
EVOLUTION
ICON
YAMAHA

DOORWORKS®

— Golf Cart Enclosures —

PATENTS #6547304 & 6776445

UPGRADED FEATURES!

- Zippered Sleeves for front roof support. Great for side mirrors!
- Snaps to cart for secure fit, no hooks.
- Wider door openings for easier cart entry & exit.
- Matching DryClub Canopy for 2 passenger golf carts.
- Fast lead times and in-stock items.
- Made for 2, 4 and 6 passenger golf carts.

New RXV 2024+



2 and 4 passenger

☎ 1-866-888-3667

🌐 Orders@DWParts.com

NEW YEAR. NEW INVENTORY.



VIEW THE NATIONWIDE GOLF CAR INVENTORY!
NPA Can Help Drive Your Golf Car Business

2026 LIVE NPA AUCTION CALENDAR

JAN					FEB					MAR					APR				
MON	TUE	WED	THU	FRI	MON	TUE	WED	THU	FRI	MON	TUE	WED	THU	FRI	MON	TUE	WED	THU	FRI
			1	2	2	3	4	5	ATL SAN	2	3	4	5	ATL SAN			1	2	ATL SAN
5	6	7	8	ATL SAN	9	10	CIN	LAK SAC	DAL	9	10	CIN	LAK SAC	DAL	6	7	CIN	LAK SAC	DAL
12	13	CIN	LAK SAC	DAL	16	17	PHI	KAN POR	ATL SAN	16	17	PHI	KAN POR	ATL SAN	13	14	PHI	KAN POR	ATL SAN
19	20	PHI	KAN POR	ATL SAN	23	24	CIN	LAK DEN	DAL	23	24	CIN	LAK DEN	DAL	20	21	CIN	LAK DEN	DAL
26	27	CIN	LAK DEN	DAL						30	31				27	28	29	30	
MAY					JUN					JUL					AUG				
MON	TUE	WED	THU	FRI	MON	TUE	WED	THU	FRI	MON	TUE	WED	THU	FRI	MON	TUE	WED	THU	FRI
				ATL SAN	1	2	3	4	ATL SAN			1	2	3	3	4	5	6	ATL SAN
4	5	CIN	LAK SAC	DAL	8	9	CIN	LAK SAC	DAL	6	7	8	9	ATL SAN	10	11	CIN	LAK SAC	DAL
11	12	PHI	KAN POR	ATL SAN	15	16	PHI	KAN POR	ATL SAN	13	14	CIN	LAK SAC	DAL	17	18	PHI	KAN POR	ATL SAN
18	19	CIN	LAK DEN	DAL	22	23	CIN	LAK DEN	DAL	20	21	PHI	KAN POR	ATL SAN	24	25	CIN	LAK DEN	DAL
25	26	27	28	29	29	30				27	28	CIN	LAK DEN	DAL	31				
SEP					OCT					NOV					DEC				
MON	TUE	WED	THU	FRI	MON	TUE	WED	THU	FRI	MON	TUE	WED	THU	FRI	MON	TUE	WED	THU	FRI
	1	2	3	ATL SAN				1	ATL SAN	2	3	CIN	LAK SAC	ATL SAN		1	CIN	LAK SAC	ATL SAN
7	8	CIN	LAK SAC	DAL	5	6	CIN	LAK SAC	DAL	9	10	PHI	KAN POR	DAL	7	8	PHI	KAN POR	DAL
14	15	PHI	KAN POR	ATL SAN	12	13	PHI	KAN POR	ATL SAN	16	17	CIN	LAK DEN	ATL SAN	14	15	CIN	LAK DEN	ATL SAN
21	22	CIN	LAK DEN	DAL	19	20	CIN	LAK DEN	DAL	23	DAL	25	26	27	21	DAL	23	24	25
28	29	30			26	27	28	29	30	30					28	29	30	31	

Download at npauctions.com/cp/NPA2026ics

AUCTIONS BEGIN AT 9:00 AM LOCAL TIME

ATLANTA • CINCINNATI • DALLAS • DENVER • KANSAS CITY • LAKELAND • PHILADELPHIA • PORTLAND • SACRAMENTO • SAN DIEGO



NPAUCTIONS.COM | 888.292.5339

NATIONAL
POWERSPORT
AUCTIONS **NPA**

DID. YOU. KNOW?

GOLF CAR OPTIONS

Can Be Read Anywhere On Your
PHONE • TABLET • COMPUTER



Sign Up [HERE](http://www.GOLFCAROPTIONS.com) or Visit
www.GOLFCAROPTIONS.com

We'll Let You Know The Minute A New Issue Drops

STAFF

EDITOR

Jodi Eyles
info@golfcaroptions.com

CREATIVE

Michelle James, Frances Bayer
info@golfcaroptions.com

CONTRIBUTORS

Michael Alexander, Sea Anchor Group
Stephen Metzger, Small Vehicle Resource
Julie Starr, Writer
Austin Wesley, The Cart Finder

NEWSTANDS

www.MagCloud.com (Free Digital & Print On Demand Copies)
www.issuu.com (Free Digital Downloads)

GENERAL INFORMATION

855-855-0638
info@golfcaroptions.com



Golf Car Options is available free of charge. The publisher assumes no responsibility for the accuracy of the advertisements or liability of any business transactions resulting from the advertisements placed in this publication.

ADVERTISER DIRECTORY

Activ-EV..... 48-49	Golf Car Graphics.....138	Progressive Insurance...7, 97
Advanced EV47	Golf Cart People101	Red Hawk/RHOX26
Allied Battery 20, 91	Golf Cart Stuff.....24	SIVO 34-35
Bestas.....27	GolfCartDog.com134	Small Vehicle Resource84
Bintelli EV 2-3	Great Day Inc.....118	Suite Seats139
Breezy EV68	Jasons Golf Carts.....138	The Cart Finder.....63
Build Your Golf Cart Software.....138	Journee/Star EV17	TNT Golf Cars.....105
C&S Custom Golf Carts....107	Lazy Life Seats + Covers..... 78-79	Trojan Battery.....11
Cart Skinz138	Lightspeed DMS19	Up and Up Logistics.....21
Converted Carts138	Litchfield Specialty 16, 101	US Battery31
DoorWorks..... 8, 94-95	LSVDA140	Vatrer.....25
Eagle Products.....119	M&M Vehicle Corp 89, 96	Vegas Golf
Eco Battery..... 4-5	MillerTech Energy	The Game....84, 90, 115, 134
Energy5135	Solutions 42-43	VIP Golf Cars85
Epoch Batteries 52-53	National Museum	Winters Recreation30
Fantasy Custom	Of Golf Cars83	WiTricity.....69
Golf Carts105	National Powersport	X-iT Outdoors 16, 107
GMT Golf Cart	Auctions9	
Accessories108-109	Nordic Plow83	



³LiVE YOUR WAY

Life is too big for low power



TrojanBattery.com

TROJAN LITHIUM
ONEPACK™





Atlas ONE Redefines What a Golf Cart Can Be

When the all-new Atlas ONE made its official debut at the 2026 PGA Show in January, it immediately drew attention from dealers, industry insiders, and enthusiasts alike. More than just a new model, the Atlas ONE represents a bold step forward in personal transportation. It blends modern design, premium comfort, cutting-edge technology, and unmatched versatility into a single platform that truly stands alone in the marketplace.



At first glance, the Atlas ONE delivers everything today's golf cart buyer expects. Standard features include headlights, taillights, turn signals, blinkers, and a refined automotive-inspired fit and finish throughout. But while those features establish a strong baseline, the real story of the Atlas ONE lies in what makes it fundamentally different from anything else on the market.

The Atlas ONE was designed to be one cart that can do it all.

Unmatched Versatility Starts Up Front

One of the most innovative features of the Atlas ONE is its electric front seat pod. Rather than relying on a traditional folding rear seat for added utility, Atlas introduced an entirely new approach. The front seats can be moved forward, a unique feature on its own that increases legroom, and this movement also enables the second row to lower and convert into a large, highly functional cargo area.

This design gives owners the flexibility of a traditional four-passenger cart while delivering real utility when it matters. Whether hauling gear to the course, loading up beach equipment, taking your dog along for the ride, or running errands around the neighborhood, the Atlas ONE adapts in seconds without compromising comfort or style.

The patent-pending second-row design uses a split configuration to expand versatility even further. Owners can fold down one side or both, depending on passenger count and cargo needs. This level of adaptability is unique in the category and reinforces the Atlas ONE as a purpose-built solution for real-world lifestyles.

Atlas Chief Marketing Officer Landon Wissler explains it best. "The Atlas ONE is truly unique in that it provides the utility of a traditional four-passenger golf cart with a folding rear seat, but with the modern style and advantages of a front four-facing model. It really is one golf cart that can do it all."

Innovative Storage Solutions From Front to Back

The Atlas ONE's versatility extends well beyond its seating configuration. Atlas engi-

neers focused heavily on storage, security, and usability, recognizing that modern golf cart owners often use their vehicles for far more than just the course.

At the rear, the Atlas ONE features an innovative tailgate design that sets it apart within the front four category. The tailgate is lockable and removable, offering flexibility to adapt the cart to different needs. It folds upward to create a secure, lockable trunk area similar to what is found on select front four models, but with a more advanced, refined design that enhances both usability and overall appearance.

***"It really is the
one golf cart that
can do it all"***

In addition to the rear tailgate, the Atlas ONE includes a lockable front trunk, commonly referred to as a frunk, along with lockable dashboard storage. When combined with the lockable rear trunk area, owners benefit

from multiple secure storage zones for valuables or personal items.

Atlas took storage innovation even further by incorporating patent-pending insulated rear fender storage compartments. These compartments provide additional space while protecting contents from heat and the elements, making them ideal for drinks, accessories, or sensitive gear. The result is a golf cart that feels thoughtfully designed for everyday life, not just occasional use.

Comfort and Design That Elevate the Experience

While the Atlas ONE is built for utility, it makes no compromises when it comes to comfort and style. The cart retains the iconic Atlas front cowl design that has become a defining element of the brand's visual identity. This instantly recognizable look signals quality, confidence, and modern sophistication.



Inside, the Atlas ONE introduces a completely new seat design focused on comfort and ergonomics. The seats feature enhanced lumbar support, improved contours, and integrated side armrests that make longer rides more enjoyable for both drivers and passengers. Both rows also include center folding armrests, an industry first that further elevates the passenger experience.

The seating is finished in a rich, distressed marine-grade camel vinyl that adds an elegant, premium touch while maintaining durability for outdoor use. The color and texture complement the Atlas ONE's modern aesthetic and reinforce its positioning as a luxury personal transportation vehicle.

Every detail, from stitching to seat geometry, reflects Atlas' commitment to thoughtful design and craftsmanship.

Technology That Keeps You Connected

Technology plays a central role in the Atlas ONE experience. Like other models in the Atlas lineup, the ONE features a stunning 12.5-inch touchscreen display with a fully custom UX and UI. The interface allows drivers to personalize settings, monitor diagnostics, and interact with the vehicle in an intuitive, user-friendly way.

Another feature that truly sets the Atlas ONE apart is its audio system. The Atlas ONE is equipped with the 14-speaker high-fidelity Atlas WAVE audio system, delivering an audio experience unlike anything else in the category. Tuned for clarity, depth, and balance, it transforms the cart into a true rolling soundstage. Rear seat audio controls allow passengers to take control of their own listening experience, so everyone on board can enjoy the ride exactly the way they want.

According to Wisser, "We believe the Atlas ONE offers the highest fidelity audio experience of any OEM in the industry. But don't take our word for it. You should hear it for yourself."

Whether cruising the neighborhood, tailgating, or relaxing at the course, the Atlas WAVE system adds an entirely new dimension to the ownership experience.

Industry-Leading Warranty and Confidence

Despite being the newest model in the Atlas lineup, the Atlas ONE is backed by the same industry-leading warranty that defines the brand. This includes the industry's first lifetime powertrain warranty, a 10-year limited battery warranty, and three years of bumper-to-bumper coverage.

This coverage reflects Atlas' confidence in its engineering, compo-



nents, and assembly processes, while giving dealers and customers long-term peace of mind.

Atlas also stands apart through the experience behind the brand. The leadership team brings more than 150 years of combined industry experience and was founded by veterans who helped shape some of the most recognizable golf cart brands and aftermarket accessories in the world.

Built With Pride in Williston, South Carolina

Every Atlas golf cart begins with more than a blueprint. It begins with pride.

Designed and assembled in Williston, South Carolina, Atlas carts reflect the values of the community behind them. Hard work, skilled craftsmanship, and a deep commitment to quality are built into every vehicle.

Building an Atlas golf cart is more than assembling parts. It is a point of pride driven by small-town values and hands-on attention to detail. Each cart is carefully inspected to meet Atlas' standards for safety, reliability, and performance.

By sourcing trusted components worldwide

while supporting the local community, Atlas delivers world-class quality with hometown heart. The result is a golf cart built with purpose, care, and pride.

One Cart. Endless Possibilities.

The Atlas ONE is not just another model. It is a statement about what modern personal transportation can be. With unmatched versatility, innovative storage solutions, premium comfort, advanced technology, and industry-leading warranty coverage, the Atlas ONE delivers an ownership experience that goes far beyond expectations.

www.atlascarts.com




X-it Outdoors Wholesale Golf Carts





Watch later
Share



WE SPECIALIZE IN
SOURCING,
BUYING,
AND SELLING
OFF-LEASE GOLF CARTS
BY THE TRUCKLOAD.

0:29 / 2:06

CC
Settings
YouTube



We offer the best selection of
tires and wheels in the industry!

Dealer Inquires Welcome

CALL: 888-283-1032 • EMAIL: sales@litchfieldspecialty.com







what is Journey?

Your All in One Platform — To Promote, Book and Manage LSVs at Vacation Hotspots

Grow Your Business Without the Heavy Lifting

With Journey Rentals, you get a turnkey system for offering on-demand, high-quality rental vehicles plus streamlined management tools and unbeatable dealer support to keep your business running smoothly.

Why Partner with Us

- **Turnkey Product Access** — Scan and Ride system allows renters to book on site, plus online reservation platform is available for future bookings.
- **Prosperity Sharing** — Increase your revenue with “No Capital” investment.
- **Marketing Support** — Professional ads, materials, and strategies to drive rentals.
- **Training & Ongoing Support** — Your success is our mission.
- **Brand Recognition** — Journey is backed by STAR EV with 20+ years in the golf cart manufacturing business.

Whether you're an established rental company or a local business ready to add a profitable new stream of income, Journey Rentals makes it easy to start fast and scale smart. Lets grow together, your customers are waiting.

For more information contact dougb@starev.com or 1-843-683-0380

Journey Rentals



LSVs/Golf Cart

Current & Pending

Legal News

This section tracks the latest legal developments and pending court cases involving LSVs/golf carts. From accident liability and community regulations to intellectual property disputes and product safety claims, we cover the legal stories shaping the industry. Stay informed on the courtroom decisions that define the future of LSV/golf cart ownership and operation.

Harris County Deputies Nab Suspect in \$20K Golf Cart Theft, Robert Lee Hale Charged

In a display of persistent detective work, Harris County Precinct 4 deputies cracked a

theft case involving a high-value golf cart. The incident, reported stolen on Wednesday, in the 12000 block of Perry Road, resulted in the arrest of one Robert Lee Hale. During an investigation, deputies surveilled footage and questioned witnesses, which led them to identify Hale as the suspect.

Reported by the Harris County Constable Precinct 4, the management initially detailed that an unknown white male had filched the 2021 EZ-GO Elite L6 golf cart, worth nearly \$20,000. Misplaced in confessions, Hale provided an oral one and directed deputies to where the golf cart was hidden, thus facilitating its recovery.

The case, which underscored the effectiveness of

the deputies in Constable Mark Herman's Office, reached a resolution when Hale was apprehended. He was subsequently charged with theft and driving while his license was invalid, placing him behind bars to await further legal proceedings.

Constable Herman, as quoted on the Harris County Constable Precinct 4 post, affirmed, "Robert Hale was arrested and booked into the Harris County Jail, charged with Theft and Driving While License Invalid. His bond was set at \$7,500.00 out of the 209th District Court." Offering a glimpse into his work, an intensive investigation was conducted by deputies to locate the golf cart and bring the perpetrator to justice.



Interested parties are encouraged to follow Harris County Precinct 4 updates on safety tips, criminal activity, and traffic accidents through their platforms on Facebook, Instagram (@Constablepct4), and their "C4 NOW" mobile application.

[SOURCE](#)



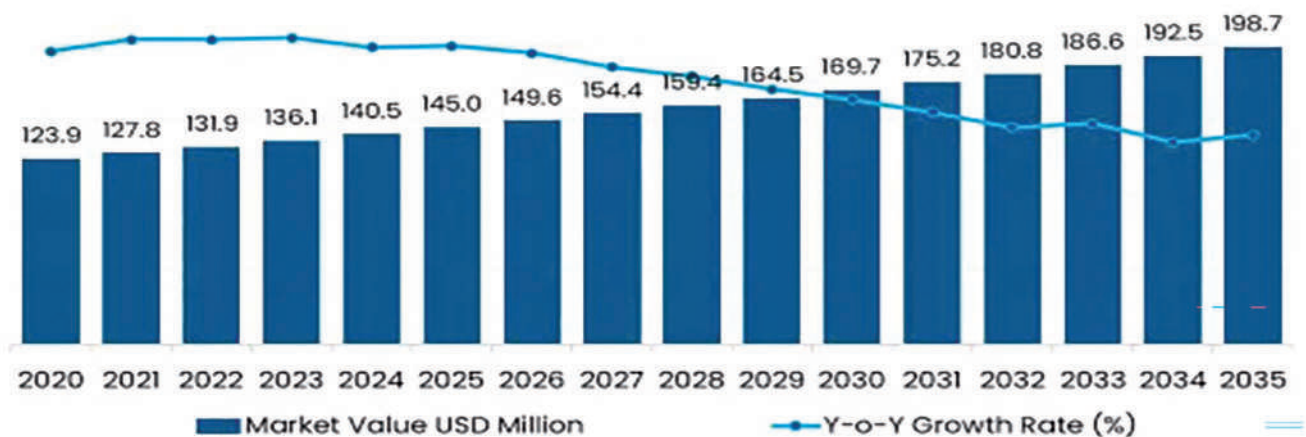
40+ Years in business. 4500+ dealerships. 450+ integration partners. No other competitor comes close.
All-in-one dealer management solution that helps dealers track inventory, speed up service, and run every department with total visibility.

PUT OUR UNPARALLELED EXPERIENCE TO WORK FOR YOU AT LIGHTSPEEDDMS.COM

LIGHTSPEED | BUILT TO LEAD

Golf Cart Industry Analysis in the UK

Value (USD Million) Analysis, 2025–2035



The demand for golf carts in the UK is projected to grow from USD 145 million in 2025 to approximately USD 198 million by 2035, the market will rise at a CAGR of 3.2% with recording an absolute increase of USD 53 million over the forecast period.

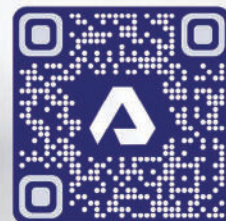
SOURCE: <https://www.factmr.com/report/united-kingdom-golf-cart-industry-analysis>



ALLIED BATTERY®
— THE POWER OF LITHIUM —



Become a
Dealer



SCAN HERE

- The Leading “Drop-in-Ready” Lithium Golf Cart Battery Solution
- Available in 36V, 48V and 72V
- Add batteries for additional run time - from stock carts up to high-performance LSVs



Allied's Bluetooth App
provides accurate
State of Charge,
Cycle Count,
Cell Status
and much more!



Get a full charge in
only 2 - 4 hours.



Comm Port / BMS Linked
Battery Monitor
shows accurate remaining charge.

**Allied Battery is a U.S. company
dedicated to providing fully supported lithium energy solutions**



Your Cargo, Our Commitment

Over 99 Years of Expertise in Efficient
Shipping & Logistics



At Up And Up Logistics LLC., we pride ourselves on our ability to move anything, from the smallest envelope to a full truckload of materials. With a strong focus on reliability, efficiency, and customer satisfaction, we offer comprehensive freight services within the lower 48 states and across Canada.

We offer:
LTL (Less Than Truckload)
PTL (Partial Truckload)
FTL (Full Truckload)



P.O. Box 514
Bristol, Indiana 46507
(574) 848-1188
upanduplogistics.com

*Michele, Golf Cart & Accessories
Sales Representative*

GET A QUOTE

GET IN TOUCH



Trojan Battery Debuts Next-Generation Lithium Solutions at the 2026 PGA Show

Golf Cart Battery Leader Showcases New OnePack™ Models as Part of Expanded Battery Family to Meet Market's Power Need

Trojan Battery Company, a global leader in battery innovation and technology for over 100 years, will showcase its newly expanded lithium-ion portfolio, as well as its flooded lead acid and AES AGM batteries in booth #3227 at the PGA show, January 20-23 in Orlando, FL. Trojan is addressing the market's increasing demand for customization, power, range, and safety with advances across all major battery technologies to provide dealers and end users with market-leading solutions for a variety of motive applications.

"Since introducing the first golf cart battery, the Trojan maroon has been synonymous with innovation. It has set the standard for advanced power solutions – from flooded lead-acid and AES AGM to lithium-ion," said Laurie Oswald, Chief Commercial Officer, Trojan Battery Company. "The unveiling of our growing lithium-ion portfolio at the 2026 PGA Show is

Trojan Battery

a clear example of that commitment and leadership.”

Expanded OnePack Family: New 36V and 72V Models

Trojan will debut a 36V OnePack and a 72V OnePack, as part of the expansion of the revolutionary lithium battery pack family. The two new voltage options complement the existing 48V battery pack lineup and allow Trojan lithium technology to address more golf, LSEV, commercial, niche, and legacy applications:

- 72V OnePack extends Trojan’s reach into higher-performance golf cart applications, as well as LSEVs, utility vehicles, and emerging international markets.
- 36V OnePack is engineered to expand OnePack so it is compatible with 36V golf cart platforms and commercial vehicles.

“With the addition of two new OnePack batteries to our lineup, Trojan is providing dealers with a complete solution that supports nearly every major voltage class. It allows end users to experience the performance, safety, and reliability of Trojan technology, regardless of their power requirements,” said Darren Brittain, VP, Motive Commercial Strategy – Lithium.

The new OnePack models maintain the inherent advantages of Trojan lithium-ion solutions. They are engineered with Lithium Iron Phosphate (LiFePO₄) and meet automotive durability and vibration testing standards. Advanced safety features, industrial-grade components, and sixth-generation advanced battery management systems (BMS) are also designed in the OnePack.

Broad Battery Portfolio

Trojan leadership in the golf cart market was established more than 70 years ago with its flooded lead acid batteries. These efficient solutions utilize Trojan’s advanced T2™ technology, and are rugged, durable, long-life batteries that deliver sustained performance for golf carts.

Trojan AES AGM batteries also provide multiple advantages in golf cart applications. AES AGM delivers up to 3x the cycle life compared to standard AGM and maintains high-capacity in extreme deep-cycling (up to 100% DoD) and partial charging.

For details on Trojan Battery Company and its products, visit <https://www.trojanbattery.com/>.

About Trojan Battery Company

For over a century, Trojan Battery Company has provided batteries to meet the needs of golf, personal transportation, and utility vehicles, as well as marine equipment, floor cleaning machines, aerial work platforms, and material handling equipment. Trojan Battery Company has revolutionized deep-cycle battery technology by introducing generations of deep-cycle flooded, lithium-ion, and AES AGM batteries.

Based in Santa Fe Springs, California, Trojan Battery operates manufacturing facilities in Sandersville and Lithonia, Georgia; Santa Fe Springs, California; Reynosa, Mexico; and Shanghai, China; as well as two advanced Research and Development Centers in the United States, offices in Europe and Asia, and a worldwide network of Trojan Master Distributors and Dealers.

Introducing the Brand New GCS™ Colorway lineup!

Order Here 



Now in multiple styles and sizes!
Starting at \$429.99.
Always **FREE** shipping!



golfcartstuff.com Call (574) 333-2494 or Text (574) 612-5195



Power Unleashed: How Vatrer's 48V 105Ah Lithium Battery is Revolutionizing the Golf Cart Experience

Vatrer Power, a leader in advanced lithium technology, has engineered a definitive solution: the 48V 105Ah Lithium Golf Cart Battery. This isn't just an upgrade; it's a complete reimagining of performance, intelligence, and reliability on the green.

The End of Compromise: Engineering a New Standard

Engineered to solve long-standing golf cart issues, this battery leverages the superior energy density of LiFePO4 chemistry. The result: a transformative performance leap that obsoletes lead-acid batteries.

Key Performance Breakthroughs:

50% Lighter: At 102.3 lbs, it enhances acceleration and reduces strain on cart systems.

10-Year Lifespan: 4,000+ deep cycles outlast 3-4 lead-acid batteries.

Rapid Recharge: Full power in 5 hours with the included 58.4V 20A charger.

Smart Management: 200A BMS with Bluetooth monitoring for voltage, temperature, and cycles.

Limited-Time Offer: Elevate Your Game:

Upgrade to Vatrer's 48V 105Ah Golf Cart Battery with exclusive benefits:

Up to 65% Off – Maximum discount on premium power

Fast US Shipping – Quick seasonal readiness

Free Delivery – Direct to your doorstep

30-Day Price Guarantee – Assured best value

7-Day Free Returns – Risk-free trial

vatrerpower.com | brand@vatrerpower.com





BIG POWER



SHOP NOW



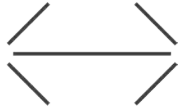
**BigBattery® means
BIG PERFORMANCE.**

**Here's why upgrading to
BigBattery pays off Big!**

- Hand-selected, Grade A battery cells mean superior quality
- + More power to drive your golf cart
 - + More mileage with every charge
 - + Better throttle response
 - + Reliability in cold weather with unique self-heating feature
 - + Less time charging to get you going sooner
 - + Longer lifespan than ordinary batteries
 - + Zero maintenance compared to lead-acid batteries
 - + ABS hardened case for extreme durability
 - + IP65 rating for dust and waterproof protection
- An unparalleled 12-year warranty



www.golfcart.com



Next Level Performance for Golf Carts and Low Speed Vehicles: Elevate Your Dashboard, Boost Your Efficiency

**Introducing the
BC301 Instrument Panel
and High-Efficiency
DC/DC Converters —
Purpose-Built for Golf
Carts and LSV (L5, L6, L7)
Manufacturers**



BC301 Instrument Panel

- Fully Programmable
- Rugged & Durable
- Easy Integration
- Enhanced User Experience
- Futuristic & Cost-Effective Multi-Color Display



DC/DC Converters

- High Efficiency
- Advanced “Battery Safe” Charging Algorithm
- Reliability You Can Count On
- Simplified Installation & Parallel Connectivity
- Cost-Effective

Ready to Future-Proof Your Fleet?

Request a custom quote or schedule a meeting below.



Check Our
Company
Presentation



Chat on
Teams



Book a Meeting
on Calendly

www.bestas.com.tr
+90 (216) 427 10 20
info@bestas.com.tr

Traction

*By Michael Alexander
Executive Director and
Founding Board Member, LSVDA*



How January Execution Sets the Pace for Local Market Growth

If December was about reflection, January was about proof.

Across the country, dealers participating in the TRACTION framework spent the first month of the year doing the essential work of local market building — the kind of work that defines long-term success but rarely makes headlines. There were no sweeping announcements or overnight wins. Instead, there were meetings held, conversations advanced, teams aligned, and trust built inside communities that are quietly deciding how neighborhood mobility will work going forward.

The first lesson from January was the power of consistency, particularly around safety. Dealers who standardized their safety story reduced friction everywhere it mattered. HOA boards, municipal staff, law enforcement officers, and insurance partners all responded more positively when they heard the same clear, repeatable message. Calm, factual safety communication builds confidence, and confidence opens doors. More

importantly, consistency at the dealer level is what allows safety standards and adoption patterns to travel across communities instead of remaining isolated successes.

Execution also required internal alignment. Dealers who equipped their teams to speak confidently about community mobility multiplied their influence. When salespeople understood why certain roads were appropriate, service teams reinforced safety equipment standards, and managers

spoke comfortably with HOA boards and city staff, dealerships stopped being viewed as vendors and started being seen as trusted local resources. That alignment is what turns individual dealerships into reliable channel partners rather than one-off points of sale.

January also reinforced an important mindset

shift: progress must be tracked early. Not every win is a signed ordinance or a ribbon cutting. Productive meetings, supportive emails, engaged partners, and thoughtful follow-up conversations are all indicators that a market is forming. Dealers who captured these early signals stayed motivated and communicated

***Perhaps most
importantly, January
demonstrated
that growth
favors leadership.
Communities rarely
ask for golf car or
LSV solutions on their
own.***

momentum to teams and partners alike. These early indicators are often the first signs of downstream demand beginning to take shape.

Perhaps most importantly, January demonstrated that growth favors leadership. Communities rarely ask for golf car or LSV solutions on their own. They respond when knowledgeable dealers initiate thoughtful, safety-focused conversations. Dealers who waited saw limited movement. Dealers who led by reaching out, educating, and listening, began shaping outcomes. Markets don't emerge because conditions are perfect; they emerge because someone decides to lead.

For OEMs and suppliers paying attention, this dealer-level execution is where durable demand begins. Local approvals, consistent safety narratives, and aligned dealer teams create predictable environments for vehicles, batteries, chargers, accessories, telematics, insurance products, and service support to scale responsibly. Supporting this work with training, co-branded safety materials, and community engagement tools isn't marketing. It's infrastructure.

Decades of industry experience have shown me that market growth never starts with a product. It starts with vision and leadership. It starts with community. And it starts with dealers who decide they

will be the catalyst for something larger than their showroom. Products follow that momentum. Volume follows.

January showed what disciplined execution looks like. February is where momentum accelerates. And 2026 is already shaping up to be one of the most consequential years this industry has ever seen.

If you want to help shape what comes next, whether as a dealer building local markets or a supplier supporting scalable, responsible growth, now is the time to engage.

Join LSVDA. Together, we're aligning dealers, partners, and communities to build safer, smarter, stronger neighborhood mobility, one local market at a time.

About the Author

Mike Alexander is the Executive Director and Secretary of the Low Speed Vehicle Dealer Association (LSVDA) and Founder of Sea Anchor Group. A veteran industry leader who has shaped the LSV and Light Duty Utility Vehicle categories, helps OEMs, suppliers, dealers, and private equity-backed companies grow through strategy, innovation, and leadership. ■

RHOX GARAGE

Each issue we will bring detailed golf car installation videos direct from the RHOX Garage YouTube Channel.



LGT-132
Turn Signal Assembly
w/ Flasher,
Horn Button



RHOX products are sold exclusively through golf car dealers.

www.rhox.com

DEALERS WANTED
→ SPECIAL DEALER CONTRACT PRICING AVAILABLE

SPECIALIZING IN USED CUSTOMIZED GOLF CARTS AND NEW GOLF CARTS

TOP BRANDS

YAMAHA
Recreational Vehicle
Authorized Dealer

EZGO
a Textron Company

Club Car
Authorized Dealer

39204 COUNTY RD 186 • SAUK CENTRE, MN 56378

OVER 250

GOLF CARTS INDOORS

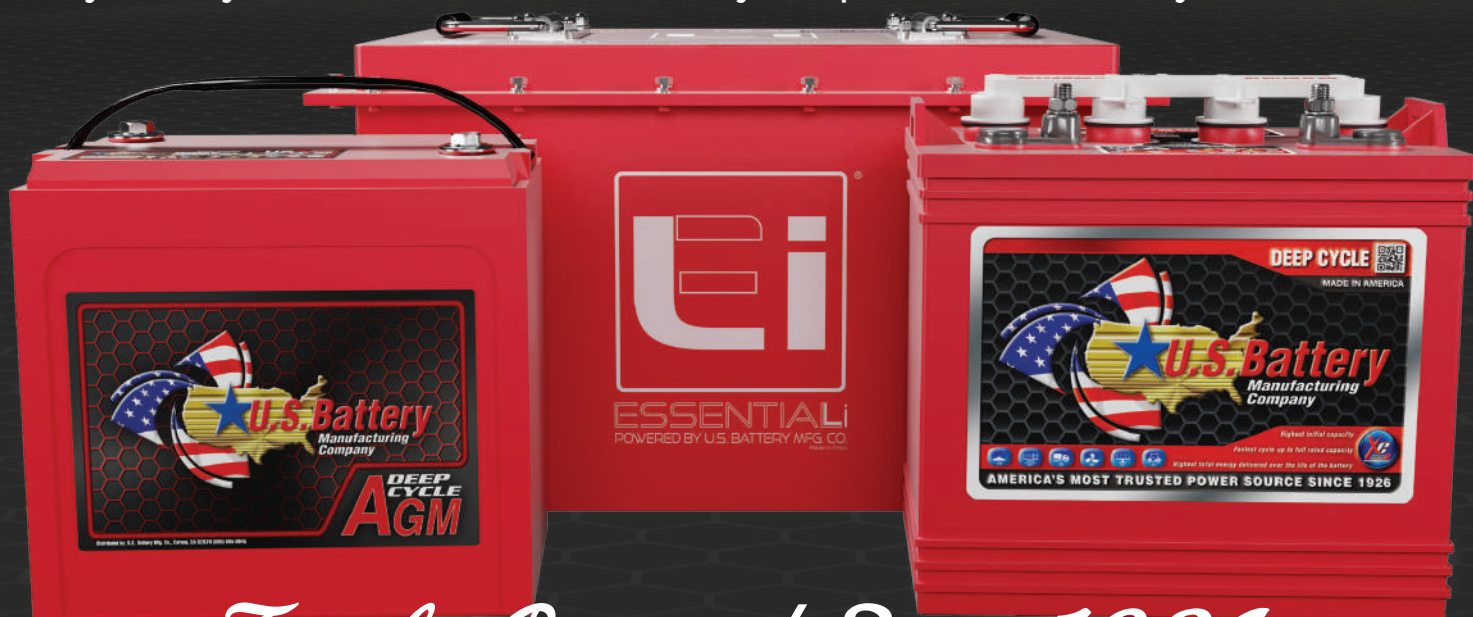
WINTERS
RECREATION

www.wintersrec.com
320 351 SLED



A CENTURY OF ENERGY, INNOVATION, & TRUST

Since 1926, U.S. Battery has been the world's most trusted manufacturer of deep-cycle batteries. For 100 years we have been the power behind your active lifestyle both on and off the golf course. Our commitment to quality and innovation ensures that every battery delivers unbeatable reliability and performance when you need it most.



Family Operated Since 1926

VISIT US AT THE PGA SHOW
BOOTH #2624



FIND THE
RIGHT BATTERY
FOR YOU



INNOXONE Revolutionizes the Golfing Experience with Cutting-Edge Cart Lineup at The 2025 PGA Show

INNOXONE is proud to invite PGA Show attendees to discover the future of golf transportation through its groundbreaking lineup of golf carts. These innovative solutions are designed to enhance the golfer's experience while offering golf courses exciting opportunities to boost revenue and improve player satisfaction.

The INNO-F1: Precision Meets Independence

Ideal for golfers who enjoy a solo journey, the INNO-F1 single-rider golf cart combines efficiency, comfort, and maneuverability. Its lightweight design enables players to navigate the course quickly, enhancing pace of play while delivering a personalized and enjoyable ride.

The INNO-F2: Tradition Reimagined

The INNO-F2 offers a modern take on the classic two-seater golf cart, catering to

INNOXONE

golfers who value shared experiences. With advanced engineering and sleek aesthetics, it delivers unmatched reliability, comfort, and storage, ensuring an exceptional round of golf every time.

The Robo Caddy: Technology and Tradition United

A game-changer in golf course innovation, the all-new Robo Caddy blends convenience with tradition. This autonomous cart offers golfers the freedom to choose between riding or walking, seamlessly following them to their ball. By eliminating the need to push or pull a cart or carry clubs, golfers can focus on the essence of the game—strategy, tradition, and camaraderie.

Solina Golf Club and INNOXONE: A Partnership for the Future

The Bryan Brothers, Wesley and George, along with investor Greg Middleton, recently acquired Indian River Golf Club in South Congaree, South Carolina, now rebranded as Solina Golf Club. In 2024, Solina received the first

batch of INNO-F1 single-rider carts, marking an exciting milestone for INNOXONE.

Mr. Young Kim, President and Designer of INNOXONE, expressed his pride: "Seeing my design come to life and delivering our first batch of INNO-F1 carts to Solina Golf Club was truly amazing."

Investor Greg Middleton from Solina Golf Club shared his enthusiasm:

"I was thrilled to receive the Single Rider Golf Carts. The first thing we did was jump in and play 18 holes. The convenience of driving straight to your ball was incredible—we completed the round in just three hours at a relaxed, enjoyable pace."

About INNOXONE

Founded in Silicon Valley by the award-winning INNODESIGN, INNOXONE has been a leader in innovative designs for over 37 years. Known for its groundbreaking approach to functionality and aesthetics, INNOXONE continues to redefine standards across industries.



The INNO-F2

In 2023, INNOXONE made waves at the Orlando PGA Show by unveiling the INNO-F1, the world's first-ever single-rider golf cart designed from the ground up. The INNO-F1 earned recognition as one of the top five golf carts at the show and was featured on CNBC/Golf Channel Live TV, captivating audiences worldwide.

For more information, visit inno-golfcarts.com.

Drive Growth with a smarter lineup

Powered by Bintelli™



GCR **GOLF CART RESOURCE**
TRUSTED AUTHORITY FOR GOLF CARTS



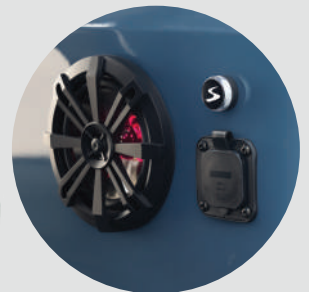
Sivo is designed to support dealers who want smart inventory, modern styling, and proven performance. With over 25 years of industry expertise behind it, this is a brand built for staying power. If you become a dealer, you get:

***STRONG MARGINS
+ REAL SUPPORT***

- Free showroom materials with your first order
- Proven Bintelli dealer support
- Eco lithium batteries

***INVENTORY
AVAILABLE FOR Q1***

- Marketing and lead support to help you grow
- Territories available in every state
- American-owned and supported



BECOME A DEALER

Scan now to get more info on maximizing your dealer profits with Sivo!



Visit sivogolfcarts.com



WiTricity AI Tech to Showcase MR/1 900W Wireless Charging and Unveil Exciting New Prod- uct at the 2026 PGA Show

Midway, GA – WiTricity AI Tech, LLC, the global leader in wireless electric vehicle (EV) charging, announced today that it will exhibit at the 73rd annual PGA Show, taking place January 20-23, 2026, in Orlando, Florida. Attendees are invited to visit Booth #2173 to experience WiTricity's latest advancements in wireless charging technology for golf carts, neighborhood electric vehicles (NEVs), personal transportation vehicles (PTVs), and more.

At the show, WiTricity will showcase its MR/1™ 900W Wireless Charging system, a revolutionary solution designed to make EV charging as simple as parking. Purpose-built for low-speed and specialty electric vehicles, the MR/1 enables fully automatic charging when a vehicle equipped with a WiTricity receiver is positioned over a Power Hub – eliminating plugs, cables, and manual handling.

In addition to live demonstrations of the

WiTricity

MR/1 system, WiTricity will unveil a brand-new wireless charging product at the PGA Show – one that promises to redefine expectations across the golf, resort, and commercial mobility industries. Details will be revealed exclusively at the event.

“Our survey of golf car and NEV owners showed overwhelming interest in wireless charging,” said Joe Benz, CEO of WiTricity. “Users consistently point to ease of use, safety, and convenience – and they preferred vehicles with wireless charging by more than 2-to-1. We’re excited to showcase the MR/1 900W system at the PGA Show and to debut a product that we believe will truly transform the industry.”

WiTricity’s booth will also feature Kinetic Green Tonino Lamborghini Luxury Electric Golf Carts, highlighting the seamless integration of wireless charging technology with premium vehicle design and performance.

Why wireless charging?

- Effortless operation – Simply park over the Power Hub and charging begins automatically
- Safe for all users – No exposed connectors; ideal for families, communities, resorts, golf courses, and commercial fleets
- Scalable and versatile – One Power Hub can serve multiple compatible vehicles
- Built to last – Engineered for reliability in harsh outdoor environments

Golf course operators, resort managers, fleet owners, and industry professionals attending the PGA Show are encouraged to visit Booth #2173 to learn how wireless EV charging can improve vehicle uptime, streamline operations, and enhance the overall ownership experience.

For more information about WiTricity’s wireless EV charging technology, visit WiTricity.com.

About WiTricity AI Tech, LLC



MR/1 900W Wireless Charging

WiTricity AI Tech, LLC is a pioneer in wireless electric vehicle charging, powering automotive, industrial, micromobility, and consumer electronics markets worldwide. The company continues to drive innovation and standardization in wireless EV charging for all types of vehicles.



Vatrer Presents Lithium Golf Cart Batteries at PGA Show 2026

Vatrer Power, a lithium battery solutions provider serving electric mobility and energy storage applications, announced its participation in the PGA Show 2026, taking place January 21–23 at the Orange County Convention Center in Orlando, Florida. The company will conduct an on-site display featuring lithium battery systems designed for golf carts and utility vehicles.

The PGA Show is widely recognized as a leading global trade event for the golf industry, bringing together manufacturers, course operators, technology providers, and service companies from across the United States and international markets. As electric golf carts continue to see expanded use beyond traditional golf courses, including resorts, residential communities, and commercial fleets, battery performance, efficiency, and lifecycle considerations have become an increasingly important focus within the industry.

Vatrer

During the event, Vatrer will showcase multiple lithium battery configurations developed to address different operational needs. These include compact mini lithium batteries intended for space-constrained golf carts and retrofit applications, lithium UTV battery solutions designed for mixed-use utility vehicles, and 48V 105Ah lithium golf cart battery, built to support longer daily operation and consistent power output in fleet and high-usage environments.

To view a brief overview of Vatrer's lithium golf cart battery solutions, visit: <https://youtu.be/CdQZdoiWR8E>

All showcased products are based on LiFe-PO4 battery chemistry, which is commonly adopted in electric mobility applications for its stability, extended cycle life, and reduced maintenance requirements compared with

conventional lead-acid battery systems. The Vatrer lithium golf cart battery lineup is designed to support a wide range of use scenarios, including golf courses, resorts, gated communities, and commercial operations seeking more reliable and lightweight energy solutions.

The Vatrer representative said. "Industry events like the PGA Show offer valuable insight into how golf carts are being used across different environments today. Engaging directly with operators and industry professionals helps highlight where lithium battery technology can improve reliability, efficiency, and long-term performance in real applications."

Vatrer's on-site display will be located in the West Building, Level 2, Booth #1113, where attendees can view golf cart and UTV lithium battery solutions and discuss application considerations during the three-day exhibition.



MR/1 900W Wireless Charging

About Vatrer Power

Vatrer is a lithium battery solutions provider focused on LiFePO4 battery systems for golf carts, utility vehicles, recreational vehicles, and energy storage applications. The company develops battery products designed to support efficiency, durability, and long-term performance across electric mobility and off-grid power use cases in the global market.

For more information, visit <https://www.vatrerpower.com>



Icon EV made their showcase world debut of new Epic FX & Icon X-Series at the 2026 PGA Show

ICON EV unveiled its most expansive and forward-looking product lineup to date. The event marked the world debut of the complete ICON X-Series, including the i20X, i40X, and i60LX, alongside the industry debut of the EPIC E20FX and EPIC E60FX.

The PGA Show officially began with Demo Day on Tuesday, January 20, at Orange County National Golf Center. Attendees had the opportunity to take complimentary shuttle rides throughout the day aboard ICON EV's all-new ICON X-Series and EPIC FX Series vehicles. This immersive, ride-ready experience marked the official industry debut of the new six-passenger models and offered a firsthand look at the future of ICON Golf Carts and EPIC Low-Speed Vehicles.

Exhibit activities continued Wednesday through Friday at the Orange County Con-

Icon EV

vention Center, where ICON EV showcased its latest innovations across multiple locations on the show floor.

Attendees were encouraged to begin their visit at ICON EV Booth #3157, where the full ICON X-Series and EPIC FX Series lineup was on display. From there, guests could experience custom brand collaborations at EcoX-Gear Booth #3451, featuring standout builds including The Captain, an EPIC E40FX, alongside an EPIC E60FX outfitted with immersive lighting and premium audio enhancements.

Returning for another year, EcoXGear & EPIC Carts also hosted a complimentary Happy Hour on Wednesday from 4:00–6:00 p.m. inside Booth #3451, offering attendees an opportunity to connect, network, and experience these custom EPIC builds in action.

In addition, the EPIC E20FX and ICON i20X competed in the PGA Show's New Product Zone for the title of Best New Product, further highlighting ICON EV's continued focus on innovation, design, and performance.

"The PGA Show is where ideas become direction and innovation meets real-world demand," said Roy Williams, Founder and CEO of ICON EV. "For 2026, we're bringing a lineup that reflects everything we believe in—bold design, smart engineering, and low-speed vehicles built for how people actually live, work, and play. If you want to see where this industry is headed next, it starts right here."

About ICON EV

ICON EV is one of the fastest-growing and highest-volume distributors of electric golf carts and Low-Speed Vehicles in the United States. The ICON Family of Brands spans golf

course transportation, neighborhood and lifestyle vehicles, luxury LSV design, and heavy-duty commercial utility solutions. Its portfolio includes ICON EV, ICON Gas, ICON HD, and EPIC Carts, including the award-winning EPIC FX Series.

ICON EV's continued growth is driven by a solutions-focused approach to innovation, thoughtful design, and an unwavering commitment to safety, performance, and customer satisfaction. Learn more at [ICONEV.com](https://www.ICONEV.com) and [EpicCarts.com](https://www.EpicCarts.com), and follow on LinkedIn, Instagram, Facebook, X & YouTube.



The Epic E60FX Golf Cart is the most incredible six-seater golf cart coming soon to an EPIC Carts dealer near you.

A bison is shown from the side, standing on a paved road. The background is a dramatic blue sky with bright, jagged lightning bolts. The text is overlaid on the left side of the image.

Built Strong - Unstoppable Power

- ***Bluetooth Monitoring***
- ***10 year full coverage warranty***
- ***300A Discharge Rate***
- ***Drop-In Ready***
- ***HD Power Terminals***

***The warranty on our sports series battery
shows that we know our product is reliable!***

1. If it stops working in the first 10 years, we repair or replace it.
2. We pay for the shipping to repair or replace
3. Exceptions: There are none.

We stand behind our Sports Series Millertech Batteries!

Millertech

millertechenergy.com



SINCE 2015

Scan to save
20% on your
**Energy
Upgrade**



Millertech

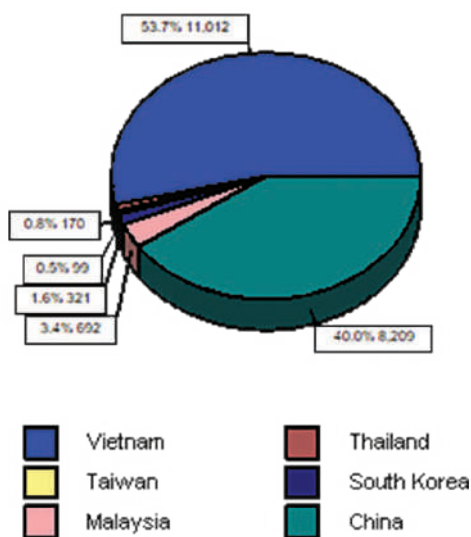
millertechenergy.com

855-629-5484

14632 Old State Road.
Middlefield, OH 44062
Monday - Thursday 8-4
Friday 8-3 EST



The Changing Pattern of Golf Car Imports and other Consequences of USITC and Department of Commerce Penalties



2025 Year-to-Date Imports from Asian Countries (Units) And Import Share

Vietnam	11,012	53.7%
Thailand	170	0.8%
Taiwan	99	0.5%
South Korea	321	1.6%
Malaysia	692	3.4%
China	8,209	40.0%
TOTAL	20,503	100.0%

Source: Department Commerce, YTD as of August 2025.

The imposition of anti-dumping penalties and countervailing duties on Chinese golf cart unites and partial assemblies thereof by the Department of Commerce and the U.S. International Trade Commission, have had their intended impact:

- The dramatic run-up in imports during 2023 and 2024 in anticipation of the above penalties and new overall tariffs on Chinese imports of all goods has been just as dramatically reversed;
- Imports from China have declined even from pre-COVID levels;
- The AD penalties and CV duties have also resulted in a changed pattern of imports, with Vietnam now surpassing China as the principal source of imports. (See data and chart to the left.)



Consequences of the import to run-up in 2024

The run-up of Chinese imports in 2024 in anticipation of the penalties scheduled for the beginning of 2025 has had two predictable consequences: First, an overstocking of inventories of 2024 and 2025 models; and second, following from the first, systemic price cutting to bring supply and demand into balance.

Dealers respond to tariffs and penalties

Here are the reactions from two prominent golf car dealers in South Florida and the Lake Livingston region in Texas upon the finalization of ITC and Department of Commerce affirming their preliminary findings of unfair trade:

- Sunshine Golf Cars, Delray Beach and Stuart, FL, an E-Z-GO dealer: "The preliminary ruling from the U.S. government [now a final ruling] is a major turning point. As a result, many

of these Chinese imports will become significantly more expensive to bring into the U.S. market. This is likely to lead to higher prices for these affected brands or adjustments in product components, features, or the country of origin. Some brands might even withdraw from the market or cease operations entirely"

- Lake Livingston Golf Cars Onalaska, TX, carrying the three major U.S. brands: "How the Tariffs Affect You as a Golf Cart Buyer? These tariffs don't just hit importers — they will directly affect consumers in several ways.

"1. Chinese-Made Golf Carts Will Get More Expensive Many affordable Chinese carts are seeing price hikes as sellers adjust to cover costs or exit the market altogether."

"2. Some Brands May Disappear. Smaller brands that relied on low pricing may exit the U.S. market. Even if they remain, parts and support could become scarce."

"3. Parts & Accessories Are Also Impacted."

Advice to consumers from both dealers? Stick with the established U.S. brands, E-Z-GO, Club Car, and Yamaha.

Excess inventory issues

It should be noted that 2025 inventory levels and those for 2026 can be estimated on an overall basis by comparing "normal" import levels with current levels, based on the import run-up of 2024. A detailed analysis of the inventory sell-off and its impact on the market appears in a major report from Small Vehicle Resource (SVR) LLC. (Contact the author at smetzger@smallreclerresource.com)

The inventory overhang is very likely to plague the market with lower prices and skimpier margins at retail. Because the run-up of imports was so great during the latter half of 2024, the impact of excess inventories will have a major impact on the market for at least a year of two, and perhaps longer.

New brands may be on the horizon

We are likely to see a continued reshuffling of supply chain away from China to other countries. Brands such as Whisper EV and Shining are in the market. Further, Star EV has introduced and registered a new brand, named LEO EV, which may signal a new supply source. Overall, there will be juggling of supply chain dynamics in an attempt to overcome the ITC/Department of Commerce penalties. In addition, we may see a movement of Chinese manufacturers to the U.S., a topic

we now address.

Movement of Chinese golf car manufacturers to the U.S.?

The following was posted on the Flanders-China Chamber of Commerce (part of the EU-China Business Association) in late 2025:

"The U.S.' strategy of ramping up tariffs on made-in-China electric vehicles to push manufacturers to shift production to the U.S. appears to be paying off – in the world of golf carts, at least... According to the manager of one leading manufacturer headquartered in Zhejiang province, some Chinese producers will have no choice but to offshore production to survive the tariff hike. 'Basically, we have to move our production lines overseas, otherwise we won't be able to do business in the United States,' said the manager, who spoke on condition of anonymity "

In reviewing the list of exhibitors are the 2026 PGA Show, you cannot help but notice the number of Chinese manufacturing companies that have booths. (This article is written just prior to the Show.) We will stop by these booths and try to get an idea of the possibility of moving to the U.S. with manufacturing facilities. Stay tuned for news in subsequent articles.

ADVANCED ™

ADVANCED
DESIGN

ADVANCED
CUSTOMIZATION

ADVANCED
QUALITY

ADVANCED
COMFORT



ADVANCED
TECHNOLOGY

ADVANCED
LUXURY

WHERE INNOVATION DRIVES EXCELLENCE

www.advancedev.com

GROW WITH ACTIV-EV

Powered by Bintelli™, Driven by Innovation

BECOME A DEALER



SCAN NOW
to get more info
on maximizing
your dealer profits
with ActivEV!



Showcase this premier golf cart brand in your dealership:

✓ HIGH DEALER PROFITS

- ✓ Low First-Time Order Requirement
- ✓ Standard Cutting Edge Lithium Battery
- ✓ 4-Year Warranty with Stress-Free Support
- ✓ Nationwide Advertising To Drive Traffic To Your Dealership

✓ INVENTORY IN STOCK

- ✓ Nationwide Dealership Support Network For Your Customers
- ✓ Showroom Materials Free with First Order + Premade Marketing Materials



For more information, visit activegolfcarts.com

ACTIVE-EV



Meet the Golf Cart That Changes Everything

The all-new E-Z-GO Liberty is a statement of style, craftsmanship, and performance. From its sleek silhouette to its intuitive features, every detail is engineered to make you the talk of the block.

Warning: May Cause Neighbors to Stare

From the exclusive IntelliScreen touchscreen to wireless charging and customizable multi-colored headlights, the Liberty delivers smart technology that makes every drive effortless and unforgettable.

Smart Control at Your Fingertips

Step into the future with Liberty's integrated touchscreen technology. The 10" IntelliScreen centralizes speed, music, and diagnostics, with security that ensures peace of mind with PIN-code access.

Premium Sound Anywhere You Go

E-Z-GO

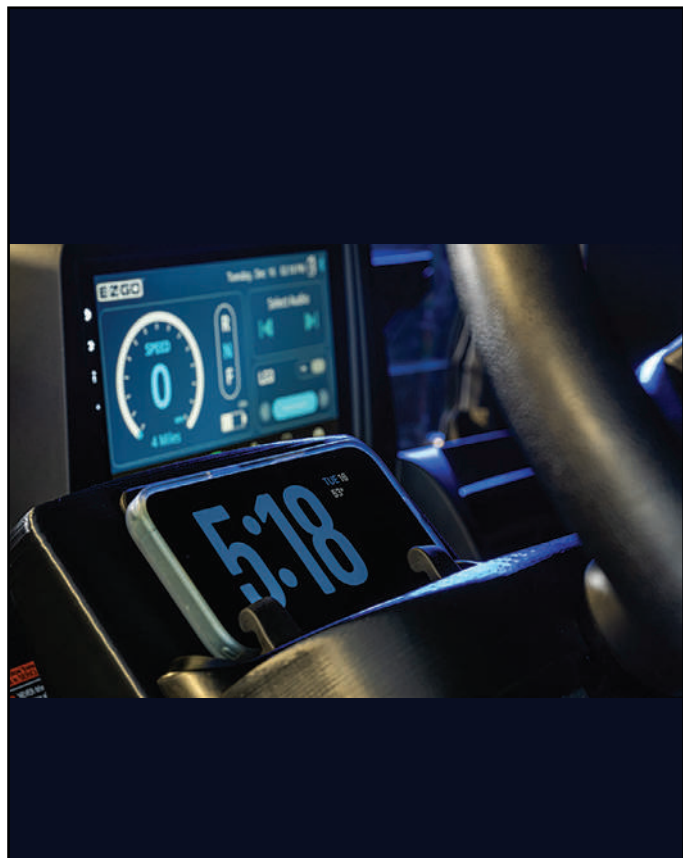
ECOXGEAR® Elite speakers bring high-quality, weatherproof audio to every ride. Whether it's cruising the neighborhood or hosting a party, the Liberty makes the soundtrack unforgettable.

Light Up & Power Up

Wireless charging keeps your devices powered without the hassle of cords, while multi-colored headlights let you customize your look like no other golf cart and light up the night in style.

The Power to Turn Heads

Setting the standard in lithium golf carts, the Liberty is powered by the industry-leading ELiTE® lithium technology with Samsung SDI, offering zero-maintenance batteries and an 8-year warranty.





Built for **Your Cart**

Custom bracketing systems designed
for **EZGO, Club Car & Yamaha.**

The perfect upgrade, tailored to your golf cart.



Veteran Owned

Phone: 1-888-501-1846



Engineered for Effortless Installation

Factory-specific bracketing for a true **drop-in fit**.
No modifications, no hassle — just plug & play power.

Competitive Pricing with free shipping

MODEL	PRICE
36V 105Ah - LiMax Series - Complete Kit	\$1,699
48V 105Ah - LiMax Series - Complete Kit	\$1,999
48V 105Ah MINI - LiMax Series - Complete Kit	\$1,999
48V 160Ah - LiMax Series - Complete Kit	\$2,499
48V 230Ah - LiMax Series - Complete Kit	\$2,999
70.4V (72V) 105Ah - LiMax Series - Complete Kit	\$2,499

MEMBER Spotlight

Platinum Sponsor — Trojan Battery: 100 Years of Power: Charging Into the Future with Innovation and Impact



For over 100 years, Trojan Battery Company has led the charge in the LSEV battery industry. From an unmatched history of reliability in lead-acid batteries to innovative, standard-setting lithium-ion products, Trojan is committed to making its next 100 years as impactful as its last.

Trojan was founded in 1925. A seminal moment in the company's history came 27 years later in 1952, when Trojan debuted the first ever electric golf cart battery for the Autoette. Famous for its maroon color and Pegasus insignia, Trojan has consistently driven innovation with its market-leading portfolio of technologies, including lead-acid, AGM and Lithium batteries.

"From pioneering the first lead-acid deep-cycle golf cart battery in the 1950s to launching the lithium-ion Trojan Lithium OnePack™ in 2024, we've always been at the forefront of innovation," said Laurie Oswald, Chief Commercial Officer of Trojan Battery Company.

Trojan's growing portfolio is built to enable golf cart customization and upgrades in addition

to supporting fleet managers and commercial applications. It recently launched the Trojan Lithium OnePack™ High Performance, which offers more continuous power than many lithium competitors in addition to the reliable efficiency and safety features of the entire OnePack™ family.

Renowned for its history, consistent quality, and next-level commitment to its dealers and partners, Trojan Battery continues its commitment to elevate the golf cart industry.

To learn more about Trojan Battery's full portfolio, visit trojanbattery.com.

If you interested in being a Platinum Sponsor, please visit; lsvda.com

MICHAEL ALEXANDER Appointed Executive Director and Secretary of LSVDA



Veteran industry leader to continue building momentum and advancing the Low Speed Vehicle dealer community

Sarasota, FL — January 15, 2026 — The Low-Speed Vehicle Dealer Association (LSVDA)

today announced that Michael Alexander has been appointed Executive Director and Secretary, effective January 15, 2026. Alexander has served in an interim leadership role since October 2025 and will now continue guiding the Association as it enters its next phase of growth and industry impact.

Since stepping into the role, Alexander has led a rapid transformation of LSVDA, expanding the Association from launch stage to more than 400 dealer members, securing 14 founding supplier sponsors, establishing a national presence at industry trade shows, and significantly increasing LSVDA's visibility through media, newsletters, webinars, and social channels. He will be meeting with industry professionals at the PGA Show in Orlando, January 21 – 23 at booth # 3697.

"Michael has delivered exactly what the Association needed at a critical moment," said Brian Rott, Chairman of the LSVDA Board of Directors. "He brought focus, credibility, and momentum. The response from dealers, sponsors, and industry partners has been overwhelmingly positive, and the Board is confident that formalizing his role positions LSVDA for sustained growth and long-term impact."

Alexander brings more than four decades of experience across the golf car, LSV, and light utility vehicle ecosystem, including executive and board roles with OEMs, suppliers, and industry organizations. He is also a trusted advisor to private equity firms and mid-market companies, with deep expertise in strategy, leadership development, innovation, and regulatory engagement. His work

has helped organizations create new product categories, strengthen dealer networks, and unlock new revenue opportunities.

"I'm incredibly grateful for the trust of the Board and the outpouring of support from dealers, sponsors, and industry partners," said Alexander. "What's been most energizing is seeing how quickly our community has rallied around a shared purpose; improving safety, elevating dealer performance, and responsibly growing the market. The opportunity ahead for our member dealers, OEMs and suppliers is significant, and I'm honored to help lead an organization that exists to serve the people building this industry every day."

As Executive Director and Secretary, Alexander will continue to focus on expanding dealer membership, growing sponsorship support, strengthening governance, advancing public policy and safety initiatives, and delivering practical tools and best practices that help members grow profitably.

About the Low Speed Vehicle Dealer Association (LSVDA)



The Low Speed Vehicle Dealer Association (LSVDA) is a national trade association dedicated to supporting and advancing the businesses that sell,

service, and support low-speed vehicles (LSVs), golf cars, cargo and personal transportation vehicles (PTVs), and neighborhood electric vehicles (NEVs).

LSVDA exists to strengthen the dealer ecosystem through education, best practices, market growth initiatives, and policy and safety leadership. The Association brings together dealers, suppliers, OEMs, and industry experts to promote responsible adoption, improve operating standards, and help members grow profitably in a rapidly evolving mobility landscape.

Through industry research, publications, events, webinars, and collaborative working groups, LSVDA

serves as a credible voice for the dealer community and a practical resource for navigating regulatory change, emerging technologies, and new market opportunities.

For more information about LSVDA membership, sponsorship opportunities, or upcoming programs, visit www.lsvda.com or contact michael@lsvda.com.

Kawasaki: Joins The Low Speed Vehicle Dealer Association (LSVDA)

Following the expansion of Kawasaki into the Personal Transportation Vehicle (PTV) category Kawasaki Motors Corp., U.S.A. is now a member and platinum sponsor of the Low Speed Vehicle Dealer Association ([LSVDA](http://www.lsvda.com).) Kawasaki's first-ever PTV, the Kawasaki NAV® is designed for cruising the good life. With premium, sporty design and comfort for the whole family, the NAV isn't just another ride. It is thoughtfully equipped with a category-first fold-flat seat, expandable front and rear storage, cupholders, USB ports, and all-LED lighting. The NAV is as functional as it is fun.

"We are excited to welcome Kawasaki to the Low Speed Vehicle Dealer Association," said Michael Alexander, Executive Director of the LSVDA. "Kawasaki's participation supports our mission to serve dealers and advance the personal transportation vehicle market through innovation, education, and industry collaboration."

Drawing on decades of experience in powersports and side x side vehicle development, Kawasaki designed the NAV as a dedicated personal transportation vehicle platform aligned with how customers use electric personal transportation vehicles today. The Kawasaki NAV is assembled in Lincoln, Nebraska with foreign and domestic parts and is purpose built to provide a premium neighborhood experience.

Dealers interested in becoming a Kawasaki NAV dealer can apply online at: <https://www.kawasaki.com/en-us/become-a-dealer>

About Kawasaki

Kawasaki started full-scale production of motorcycles over a half century ago. The first Kawasaki motorcycle engine was designed based on technical know-how garnered from the development and production of aircraft engines, and Kawasaki's entry into the motorcycle industry was driven by the company's constant effort to develop new technologies. Numerous new Kawasaki models introduced over the years have helped shape the market, and in the process have created enduring legends based on their unique engineering, power, design and riding pleasure. In the future, Kawasaki Motors, Ltd. is committed to maintaining and furthering these strengths which will surely give birth to new legends.

Kawasaki Motors Corp., U.S.A. markets and distributes Kawasaki motorcycles, ATVs, side x sides, and JET SKI® watercraft through a network of approximately 1,100 independent retailers, with close to an additional 7,700 retailers specializing in general purpose engines. Kawasaki and its affiliates employ nearly 3,100 people in the United States, with approximately 260 of them located at Kawasaki's Foothill Ranch, California headquarters.

Kawasaki's tagline, "Let the Good Times Roll.®", is recognized worldwide. The Kawasaki brand is synonymous with powerful, stylish and category-leading vehicles. Information about Kawasaki's complete line of powersports products and Kawasaki affiliates can be found on the Internet at www.kawasaki.com.

Overview

Activity remained steady in December, with limited year-end legislation but clear signals about where regulation and enforcement are headed in 2026. Across states and local communities, the focus continues to shift toward clearer rules, safer roadway interactions, and more consistent expectations for dealers and vehicle owners. LSVDA's role remains early visibility, engagement with policy makers, translating emerging policy and incident trends into practical guidance that supports compliance, safety, and sustainable growth.

Regulation & Policy Watch

At the state level, lawmakers continue shifting golf cart regulation from fragmented local rules to clear statewide frameworks, then refining them as real-world issues emerge. In South Carolina, a follow-on bill was prefiled to adjust the new seat belt law, focusing on passengers under age 12, an example of lawmakers responding to child-safety and enforcement realities after implementation.

In Florida, legislation addressing golf cart roadway crossings remains active. The proposal would allow carts to cross certain multi-lane highways at approved, signalized intersections, reflecting a push for safer, engineered solutions where informal crossings already exist.

Federal activity was limited but included a narrowly focused trade bill affecting golf cart tire imports, with potential downstream impacts on pricing and dealer margins.

For LSVDA members, the takeaway is clear: early visibility matters. LSVDA will continue monitoring legislation and translating it into practical guidance that supports safe, sustainable industry growth.

Local Ordinances

December brought a noticeable rise in local golf cart ordinance activity across several states. Communities are moving beyond simple approvals and now focusing on nighttime operation, permits and fees, inspections, zoning, parking, and right-

of-way rules.

What's driving it? Growing neighborhood use, safety concerns, and enforcement costs. While this adds complexity, it also creates opportunity. Clear ordinances often unlock demand for compliant vehicles, safety upgrades, inspections, and permit services—areas where dealers and suppliers can lead.

For LSVDA members, local ordinances are often the earliest signal of broader policy momentum. Tracking them early helps dealers stay compliant, educate customers, and shape outcomes before rules harden.

What You Should Do Now

- Dealers: Prepare a local compliance checklist and "street-ready" upgrade packages.
- Sponsors: Support dealers with safety, lighting, inspection, and permit-workflow solutions.
- LSVDA Members: Watch for the upcoming model ordinance toolkit and ongoing ordinance updates.

To read more of this monthly detailed report, or more insights like this as it pertains to you, the golf cart dealer join today at www.LSVDA.com



By Paul Vitrano
Policy & Safety
Committee, LSVDA

MEMBER Spotlight

Platinum Sponsor — Red Hawk: Built on Great Parts, Backed by Even Better People



Twenty-five years ago, Red Hawk was BUILT on one simple principle: great golf car parts, backed by good people, make all the difference. From the beginning, that principle applied not only to the products we sell, but to how we serve—being responsive, accessible, and committed to real relationships. We founded Red Hawk on the belief that this is a people business as much as it is a parts business. As we celebrate our 25th anniversary in 2026, that approach remains unchanged.

We began when we saw an opportunity to be a better supplier of repair and replacement parts for golf cars. By focusing on dependable fit, consistent performance, and reliable availability—supported by knowledgeable, responsive service—we built a strong foundation that continues to support dealers today. Our Red Hawk® line of repair and replacement parts remains central to what we do.

Over time, we expanded our product lineup to support a broader range of dealer and customer needs. This included RHOX® (Red Hawk Off-Road eXtreme), our proprietary line of rugged accessories designed for durability, function, and ease of installation across utility, recreational, and street-legal golf car applications.

We also offer DoubleTake® body sets and coordinating accessories, giving dealers premium styling and customization options. With automotive-inspired designs and color-coordinating components, DoubleTake enables high-impact visual upgrades that are practical to sell and install.

Today, we support dealers across North America through a centralized distribution system and a service-first, people-driven culture. As a founding member of the Low Speed Vehicle Dealers Association (LSVDA), we are actively involved in advancing standards that elevate safety, professionalism, and long-term growth within the low-speed vehicle space—helping shape expectations for what these vehicles can be today and into the future.

If you are interested in being a Platinum Sponsor, please visit; lsvda.com

DEALERS

Are you looking to grow your business?

Engage with other dealers?

Build a strong LSV/ golf cart community?

Take advantage of this special deal for Golf Car Options readers in conjunction with **LSVDA** Silver Level Dealer Membership for just \$99.

A collage of three images related to the LSVDA. The top image shows a group of men in a meeting, with a banner in the background that reads 'LSVDA LOW SPEED VEHICLE DEALER ASSOCIATION DEALERS & SUPPLIERS MEETING TODAY'. The middle image shows a man speaking at a podium to an audience, with a screen behind him displaying 'LSVDA DRIVING FORWARD.' and a list of bullet points. The bottom image shows a man sitting at a table with a laptop, with a banner in the background that reads 'LSVDA DRIVING FORWARD.'

Focused Conversations. Stronger Community.

LSVDA is growing fast and deliberately.

- New Members in Multiple Categories
- Engaging Meetings with Dealers and Sponsors

Silver Level Dealer Membership
\$99 for a Limited Time

LSVDA
DRIVING FORWARD.

Dealer Level Sponsor — Driving the Future of Our Industry Together



On behalf of the Board of Directors of the Low Speed Vehicle Dealer Association (LSVDA), it is my pleasure to officially welcome **M&M Golf Cars** as a Founding Platinum Dealer Member.

If you interested in joining the Founding Dealer Member Club, please visit; lsvda.com

Dealer Level Sponsor — Driving the Future of Our Industry Together



On behalf of the Board of Directors of the Low Speed Vehicle Dealer Association (LSVDA), it is my pleasure to officially welcome **Mikeys Motors** as a Founding Platinum Dealer Member.

If you interested in joining the Founding Dealer Member Club, please visit; lsvda.com



The Future is Written in the STARS: Leo and Gemini Make a Grand Entrance at the 2026 PGA Show

Following the highly anticipated reveal at the 2026 PGA Show, STAR EV is proud to announce the official launch of its two newest “stars” in the electric vehicle universe: the Leo and the Gemini. Together, these models push low-speed vehicle (LSV) technology forward, combining refined performance across everyday settings with the comfort, safety, and design expected in today’s connected communities.

Founded over 23 years ago and proudly family-owned and operated in Simpsonville, South Carolina, STAR EV designs and manufactures premium electric golf carts and low-speed vehicles (LSVs) for a new generation of local transportation. Built for communities, commercial spaces, and lifestyle destinations, STAR EV vehicles offer a refined alternative to traditional mobility solutions, supported by a growing network of 200+ dealerships nationwide.

Star EV

The Leo: Built for Adventure, Designed for Comfort.

The Leo model is STAR EV's answer to the growing demand for a four-forward, feature-rich cart that treats the driver like royalty. Named after the lion of the zodiac, the Leo is designed for those who want to navigate their community with a sense of comfort and confidence. Every detail of the Leo has been meticulously engineered with the passengers in mind. The driving experience is highly customizable, featuring adjustable armrests and an adjustable steering column, ensuring that every driver can find their perfect ergonomic fit. Safety and entertainment are seamlessly integrated, with three-point seatbelts providing peace of mind while integrated entertainment systems with wireless Carplay & Android Auto and convenient phone charging ports keep passengers connected on the go. Whether you are heading to the first tee or a neighbor's dinner party, the Leo ensures you arrive in style and total comfort.

Matt Rogers, President of RMI Golf Carts Dealership, commented "Leo checks so many boxes: comfort, design, and everyday usability. It appeals to customers who want a premium cart from a trusted brand that they can use around the community, packed with the features they want for their lifestyle."

STAR's Leo Model is available now for dealers, you can expect to see it at dealerships nationwide this Spring.

The Gemini: The Star on the Horizon

Arriving later this year, Gemini combines powerhouse performance with bold, automotive-inspired design. As STAR EV's premier new model, Gemini is built for drivers who demand more. Gemini delivers more capability, more style, and the most advanced features available.

At the heart of the Gemini is a high-output 8hp Permanent Magnetic Motor, an engineering marvel that allows for an industry-leading range of up to 90 miles on a single charge. This efficiency makes it the ideal choice for large-scale resorts, sprawling gated communities, and heavy-duty daily use. The styling of the Gemini takes direct cues from the automotive world, specifically the rugged yet refined silhouette of a modern ATV/UTV. One of its most innovative features is the removable body panels, allowing owners to easily maintain or customize their vehicle's appearance with additional easy access to vehicle internals. Alongside customization, its large storage trunk with removable tailgate, four-wheel independent suspension system, and LED screen rear-panel has the imagination going wild for the possibilities the vehicle has in store for communities, families, and commercial use alike.

Nadine Jacobs, Executive Director at STAR EV, commented: "The Gemini is our most ambitious design yet. It combines automotive-inspired styling, modular customization, and advanced system control & safety features to give owners more freedom:

Star EV



freedom to customize, maintain, and use their vehicle far beyond the golf course, across community, family, and commercial settings.”

Leading the Way into 2026

The reveal in Orlando was more than just a product launch; it was a demonstration of STAR EV's commitment to “shining bright” in an increasingly competitive market. By offering two distinct paths, the luxury and comfort of the Leo and the high-performance automotive styling of the Gemini, STAR EV is providing dealers and customers with a “fresh new ride” for the 2026 season.

STAR EV is ready to help customers reach for the stars.

For further information related to STAR EV's Products and Services, please contact sales@starev.com or visit them at starev.com as well as [Instagram](#), [Facebook](#), and [Linkedin](#).





Cartfinder

Looking for Your Next Golf Cart? Find it on CartFinder!



Browse a Huge Variety of Listings in One Place on CartFinder — The Golf Cart Marketplace!

Find the Perfect Ride

- ✓ Browse dozens of brands, from budget-friendly to luxury models
- ✓ Easy filtering by price, brand, condition, power source, seating, and more
- ✓ Expert tips and resources on our blog

Dealers: Get in Front of More Buyers!

- ✓ Showcase your inventory to a growing audience, locally and beyond
- ✓ Generate direct leads with listings linking to your site, financing page, and contact info
- ✓ Keep your dealership top of mind with buyers for when they're ready to purchase

Why Choose CartFinder?

Skip the hassle of searching multiple dealer websites or sifting through unreliable listings. CartFinder connects you with trusted dealers and private sellers, offering one of the largest selections of new and used golf carts available online. We currently have inventory in 11 states and are growing quickly.



SCAN QR CODE
TO VISIT WEBSITE

Visit TheCartFinder.com or email info@thecartfinder.com to get started!

THROUGH THE EYES OF SOCIAL MEDIA

[Team Golf Carts Modified™](#) introduced their new dealer platform that has been added to their consumer platform. They also released a brand new 24 cell 76V lithium battery with the highest specs in the industry and announced their new partnership with XComp tires. Team Golf Carts Modified also won the Nivel/Navitas poker run and got to take home an awesome cart.



[Matts Custom Golf Carts - Facebook](#)
Tara EV at the Orlando PGA show



Ride Modz. The response to their new lithium battery and custom cart was unreal. They introduced the all new MODZ lithium battery built in partnership with EKT. Designed for an easy install with a clean, straightforward setup. IP67 rated to handle golf cart life with ease. Patent pending built in charger mount keeps everything clean. Built in battery heater helps maintain performance when temps drop. An LCD rotary charge meter with a wake-up button makes checking the charge simple. And here's the best part. Their industry-first limited lifetime warranty on the battery.



Trojan Battery. Meet the 72-volt Trojan OnePack, new at the 2026 PGA Show as featured in this custom build powered by their OnePack™ and built by the guys at Boulevard Carts.

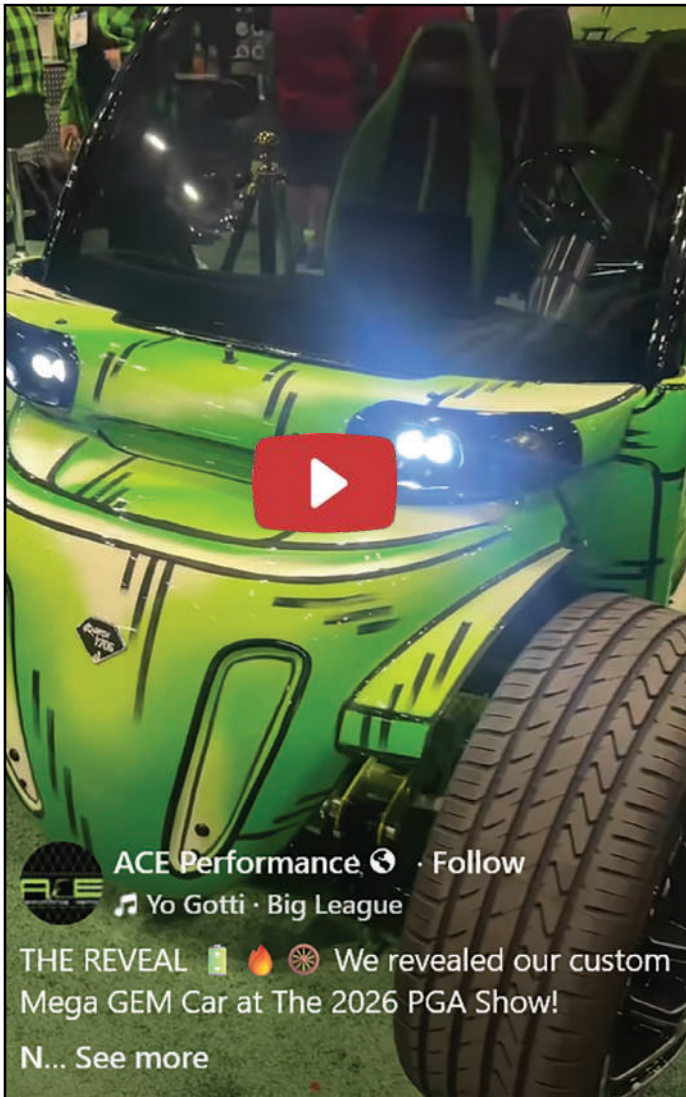


MadJax. Spotted at the Nivel/MadJax booth, Warren Sapp. Taking time to check out the new MadJax Ascent.



2026 PGA SHOW HIGHLIGHTS

Navitas - Unveiled the Manga Custom Gem E4 built by @gemcarsmodified for @navitasvehiclesystems. Navitas Vehicle Systems Ltd., Bolt Energy USA, SoundExtreme by Ecoxgear, TIS Offroad, HornBlasters.com, AccuAir Suspension, KBMER and J. Todd Dussault



Eco Battery

By combining our proven Eco Battery lithium batteries with the EB Power AC Powertrain, we have elevated the level of total integration, we call it the ECO SYSTEM, and it provides a platform that will enable us to continue to innovate in ways not possible before.

For our customers? It gives you amazing performance, unmatched features and worry-free use for both aftermarket upgraded carts or brand new factory direct options.



2026 PGA SHOW HIGHLIGHTS

[Rydz USA - Facebook](#). Our electric low speed vehicles are driven by a high horse-power electric motor powered by Navitas, giving RYDZ smooth acceleration, reliable performance, and confidence across life-style and destination environments.



[Elite Custom Golf Cars - Facebook](#). Evolution EV.



[Cart Life - Facebook](#). Marty McCart Airbag show cart



[Atlas Carts - Facebook](#). The all new Atlas ONE





BREEZYEV.COM



BREEZE 4L

QUICK DEALER SUPPORT



CARTS



BATTERY PARTS



BREEZYEV.COM
OP@BREEZYEV.COM



MR/1™ Wireless Charging System

Drive. Park. Charge.

EASY TO INSTALL. SAFE TO USE.
NEVER PLUG IN AGAIN!

- All-weather, durable construction
- Plugs into household outlet
- Meets rigorous safety standards
- Same charging speed as plug-in
- Little or no maintenance



MSRP
\$3,250.00!



witricity.com

Ant Cart



[NA](#)

Birdie Balou



[birdiebalou.com](#)

Brose



[brose.com](#)

Atlas Carts



[atlascarts.com](#)

BiT Golf Cart Software



[bitdms.com](#)

BSL New Energy



[lithiumforkliftbattery.com](#)

Axios EV



[axiosev.com](#)

BLP Moto



[blp-moto.com](#)

CaddyBar



[caddybar.com](#)

BC Companies LLC



[bccollc.com](#)

Breezy EV



[breezyev.com](#)

Cart IoT



[cartiot.com](#)

Cart Locker Group



thecartlocker.com

Curenta Battery



curentabattery.com

Eagle Parts & Products



eagleproducts.us

Club Car



clubcar.com

Denago EV



denagoev.com

Eco Battery



ecobattery.com

Club Pro Mfg



clubpro.com

Drydots



drydots.com

Eneroc



enerocbattery.com

Club Protector



clubprotector.com

Duracell



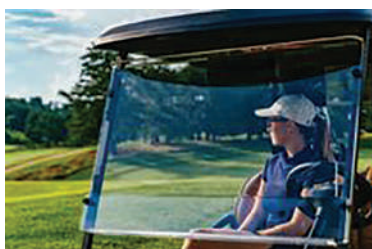
duracellion.com

Evolution



evolutionelectricvehicle.com

Evolution Windshields



evolutionwindshields.com

Freewind



freewind.com

Guangdong Kalaida Nokins



nokinsgolfcart.com

E-Z-Go



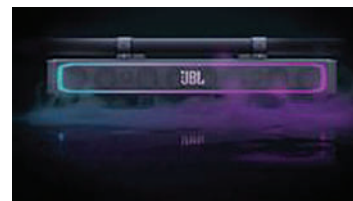
ezgo.txtsv.com

Flight Systems Ind Prod



fsp.biz

Harman International JBL



harmanaudio.com

FG Transmission Tech



fullgear.com.cn

Genek Parts



genekparts.com

Hebei Leicheng Mach



leicheng.com.cn

FJ Controlling USA



NA

Grove and Green



groveandgreen.com

Honor LSV



honorlsv.com

HuntVE



huntve.com

Innoxone



innogolfcarts.com

Jiangsu Shenghao



vtgbody.com

Iceco Portable Freezer

Truly Reversible Lid

Open directly from any direction, no need to reinstall



icecofreezer.com

irova Hello Caddy



irova.kr

Joycube Battery Co



phyloin.com

ICON EV



iconev.com

Jiangsu FMX Elec Veh



NA

Kandi America



kandiamerica.com

ilmeCar



us.imecar.com

Jiangsu Luobei

Lobo EV



loboevtech.com

KK Carts



en.sdqkcy.com

Lithium Rhino



lithiumrhino.com

Maverick Advantage



maverickadvantage.net

Novus Polishes



novuspolish.com

LSVDA



lsvda.com

Navitas Vehicle Sys



navitasvs.com

Olelon Energy Co Lts



olelonenergy.com

Massimo Motor Sports



massiimoelectric.com

New Use Energy



newuseenergy.com

Qingdao Florescence *New Energy*



golfs-cart.com

MATE Mobility



matemobility.co.kr

Nivel Parts & Mfg



nivelparts.com

RYDZ



rydzllc.com

SeaDek



seadek.com

Shenzhen Improve Battery Co



improvecn.com

Star EV



starev.com

SEG Automotive



seg-automotive.com

Shenzhen Lishen New Energy

Starline



[NA](#)

starlinepower.com

Shandong Kepler



kepler-cart.com

Shenzhen Shiwei New Energy



siswaybattery.com

StixClip



stixclip.com

Shandong Meeko New Energy



meekocars.com

SilverWolf Vehicles



silverwolf.com

Stripebird



stripebird.com

Suzhou Clouds Power



cloudspowerusa.com

The Cart Locker



thecartlocker.com

Turtle Box

Columbia Vehicle Group



turtleboxaudio.com

Tara Electric Vehicle



taraelectricvehicles.com

Tomberlin

Columbia Vehicle Group



tomberlinusa.com

U.S. Battery Mfg Co



usbattery.com

TEKO Inc



tekoev.com

Tophat Car Enclosures



tophatenclosures.com

Vatrer Power



vatrerpower.com

TG Caddies



tgcaddy.com

Trojan Battery Company



trojanbattery.com

Venom EV



venom-ev.com

Verdi Motor EV



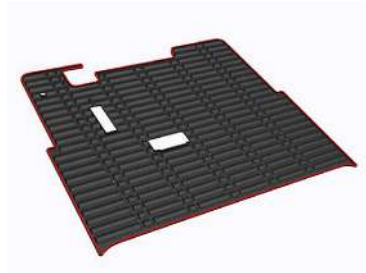
verdimotor.com

Whisper Carts



whisperev.com

Xiamen Aidezhou



xmadz.com

VertaCat



vertacat.com

Wind Genie



windgeniegolf.com

Yamaha Golf-Car Co



yamahagolfcar.com

Vimo Mobility



vimomobility.com

WiTricity AI Tech LLC



witricity.com

Yangzhou Boom New Energy



[NA](#)

Volvit



[NA](#)

XCom Tires



shopxcomp.com

Custom seat covers for forward-thinking vehicles
like the DENAGO ROVER XL....



Elevate your
seats with
LAZY LIFE's advanced
upholstery options: custom
embroidery, eye-catching
colors, aggressive
stitch patterns,
and our growing
line of Cool Touch
marine grade
vinyls.



No custom is complete without a **LAZYLIFE** seat.

... and the EVOLUTION D5



Proudly made in the USA, every cover is crafted with precision using the highest quality materials and workmanship.



LAZYLIFE
SEATS + COVERS

visit www.lazylifeseat.com or call 800-705-4359 today!

LSV/Golf Cart Community News

This section highlights golf cart news and stories from communities across the country. We feature local events, parades, shows, and the creative ways people use and celebrate their carts. From neighborhood updates to standout custom builds, it's a showcase of golf cart culture in action. Stay connected with the latest happenings and see how golf carts bring communities together.

'Rented' Golf Cart Turns Out Stolen: Indiana Teen Piles Up More Charges

An 18-year-old from Indiana is facing a mounting list of felonies in the Florida Keys after deputies say a botched attempt to steal a motorcycle led them to discover he was cruising around in a stolen golf cart.

Liam Ferris Engel, of Lebanon, Indiana, was arrested late Friday, Jan. 2, following reports of a prowler on Sugarloaf Key. While he was initially booked for trying to take a motorcycle, authorities added a grand theft charge after determining his getaway vehicle didn't belong to him either.

The incident began around 9:40 p.m. when Monroe County Sheriff's deputies responded to a home on North Johnson Drive. A witness reported seeing a stranger sitting inside a pickup truck on the property. When confronted, the young man—later identified as Engel—fled the scene.

Surveillance footage reviewed by investigators offered a clearer picture of his movements. The video allegedly showed Engel straddling a motorcycle parked at the residence, attempting to start it. Unable to get the bike moving, he apparently abandoned the effort.

Deputies caught up with Engel a short time later while he was driving a golf cart nearby. During questioning, Engel claimed he had rented the cart.

However, a check revealed it had been stolen from a different residence on Hawksbill Lane. The investigation took another turn when deputies found Engel in possession of the keys to the motorcycle he had tried to take earlier.

In an apparent attempt to discard the evidence while in custody, Engel reportedly dropped the keys and tried to kick them underneath a patrol car to hide them from sight.

Engel was booked into jail on charges of grand theft, burglary of an occupied dwelling, burglary of an unoccupied conveyance, theft, attempted grand theft, and tampering with evidence.

[SOURCE](#)

One person killed in golf cart crash after vehicle overturns, entrapping driver

CHARLESTON, S.C. (WCIV) — One person was killed in a overturned golf cart incident on Saturday, according to the Charleston County Sheriff's Office.

The incident report from police

states that at approximately 7 p.m. deputies responded to the 2800 block of South Palmer Drive in Charleston for reports of a golf cart that had overturned.

An investigation found that the driver was turning at a high rate of speed, causing the golf cart to overturn and eject the driver. As the driver was ejected, they became trapped under the golf cart and died as a result of their injuries, according to Charleston

County EMS.

The Charleston County Sheriff's Office's Traffic Services Unit is investigating the crash. Anyone that believes that they may have information that would assist in the investigation, is encouraged to contact the Sheriff's Office at 843-202- 1700.

[SOURCE](#)

Winter Garden expands Golf Cart District

The Winter Garden City Commission unanimously approved a resolution to increase the Golf Cart District to include multiple areas north of West Colonial Drive.

The new map was approved during the commission's meeting Thursday, Jan. 8. Commissioner Colin Sharman was absent.

Assistant City Manager Steve Pash said the city analyzed its maps of the Golf Cart District and looked at lowering speed limits. A survey was conducted from July 23 through Aug. 31, with a majority of people who responded supporting lowering the speed limits on roads.

The city lowered the speed limits on the roads in November, and staff came forward with the resolution at the meeting with a revised map.

"I've been in charge of the Golf Cart District for 14 years now, and we pretty much are always receiving requests to expand,

expand, expand, get my neighborhood," Pash said. "This (map) pretty much gets the majority of the streets north of (State Road) 50."

Pash said making the Golf Cart District encompass more streets will make it easier for local residents to access downtown Winter Garden and make their way around the areas north of West Colonial Drive.

The newly approved map can be found on the city's website, cwgd.com/480/golf-cart-information.

[SOURCE](#)

Constables recover stolen \$20,000 golf cart in swift investigation

HOUSTON, Texas — An adult male is in custody after Harris County Constable Precinct 4 deputies recovered a stolen 2021 EZ-GO golf cart valued at approximately \$20,000.

The arrest followed an investigation near 12000 Misty Willow Drive.

The suspect provided an oral confession and directed deputies to the stolen golf cart, according to a press release from the department. He faces charges of Felony Theft of Property and Driving While License Suspended.

The department praised the "excellent investigative work resulting in a quick recovery and arrest."

[SOURCE](#)



'Kept cruising': Florida man ditches pal with broken hip 'like nothing happened'

A Florida man is facing criminal charges after stealing a golf cart and then ditching a friend who broke his hip after being hurled off the back during an "abrupt u-turn," according to police. Cops say the man "went joyriding around the City of Key West" instead of stopping to help the pal.

Vincent Fortin, 51, of Winter Haven, was out "joyriding" with the friend when the incident occurred, according to his arrest report. "During that Joyride, he caused serious bodily injury to the victim ... which will require emergency surgery to repair," the report says.

Fortin and another pal had swiped the golf cart earlier in

the day using a "master key" that cops say can start multiple golf carts, per the report.

The injured friend said he was picked up by Fortin and riding in the rear of the golf cart when Fortin made the u-turn and threw him "from the rear seat onto the pavement," according to police. A witness who spoke to cops corroborated this and said he saw Fortin "slam on his brakes" before turning around and "throwing" the friend from the golf cart, the arrest report says.

"Fortin did not stop and render aid, but instead, left the scene and kept cruising around Duval Street, like nothing happened," the report states.

The pal was transported to Lower Keys Medical Center where he received a CT scan of his head, neck and hip. The hip scan showed "an obvious break in his

bone on his left hip" and emergency surgery was performed, according to cops.

Fortin, who does not have a driver's license, was taken into custody after an officer who was conducting a routine patrol in the area saw him "run a red light in front of him" while driving the golf cart, his arrest report says. The officer "realized that the driver of this golf cart was the same subject that was allegedly driving the golf cart earlier" and Fortin was promptly arrested.

Fortin is facing charges of grand theft, leaving the scene of a crash causing serious bodily injury, and operating a vehicle without a valid license. He's being held on a \$41,000 bond and is scheduled to be arraigned on Jan. 29.

[**SOURCE**](#)

Jojo Robinson splurges R200k on custom golf cart for Boo Bear

If there is one thing Jojo Robinson knows how to do, it's keep the "rich" in "The Real Housewives of Durban".

The tattoo-clad queen has just raised the bar for "Wife of the Year" honours, and let's just say the neighbourhood watch isn't the only thing keeping an eye on the Robinson estate this week.

She had turned fans' heads (and fueled some envy) by gifting her husband, Calven Robinson (affectionately called Boo Bear),

a custom, high-end golf cart.

Jojo dropped a cool R200,000+ on a state-of-the-art leisure vehicle that looks more like a mini-supercar than a golf cart.

"I parked a Golf Cart in the house !!! I surprised Boo bear with his new Denago Rover XI Golf cart that I bought him for Christmas (with his money), it just arrived this past weekend," wrote Jojo on Instagram.

"We saw it at a show recently, and Boo bear fell in love with it. They are brand new in the country, and honestly, the extras you get with this Golf cart and the price point, considering what the competition costs. It's liter-

ally his new favourite toy," she continued.

The luxury cart features custom leather upholstery and a high-end sound system, perfect for blasting Jojo's favourite tracks while cruising the estate. It also comes with a touch screen, auto backup camera, headlights, indicator, brake lights, NFC key start and more.

The new "mini-whip" joins an already crowded (and very expensive) garage as the couple owns a fleet including a McLaren and a Range Rover.

[**SOURCE**](#)



Attach the NORDIC PLOW to your Golf Cart this Winter!

- Fits most golf carts
- Made in the USA and affordable!
- Easy to install our customized hitch
- Available for both standard or lifted carts
- Patented lightweight, rounded edge plow blade

The rounded edge glides over gravel, pavers, sidewalk cracks, and even turf!

Attach in 3 easy steps:

1. Remove Front Shield
2. Attach Hitch
3. Insert Nordic Plow & Handle



nordicplow.com | 888-662-PLOW



Visit the National Museum of Golf Cars and discover the history of the golf car from the very start. The museum features micro cars and beautifully restored carts from the 50's, 60's and 70's. Free Admission



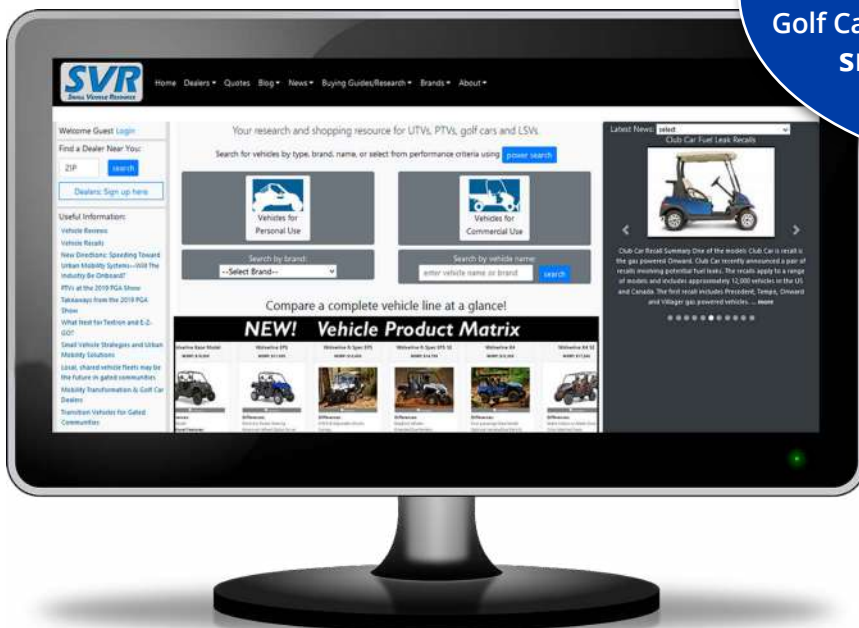
Located inside the CartMart showroom in La Quinta
78525 Ca Hwy111 Suite 200, La Quinta, CA 92253



SVR Small Vehicle Resource

Vehicles For Personal Use | Vehicles For Commercial Use

Small Vehicle Resource is your one-stop source for information on small task-oriented vehicles: Utility vehicles, LSVs/NEVs and Golf Cars for commercial or personal use. smallvehiclresource.com



Find A Dealer
Add Your Dealership
Buying Guides
Research Guides
Complete Brand Listing
Blog
News

BONUS EDITION!

BONUS EDITION!

Vegas Golf
On the Course Golf Game

Authentic Poker Chips!
12 CHIPS!

FREE! BONUS CHIPS
Eagle & Grave Digger*

FREE! Accessory Bag with Carabiner
(on back)

* Grave Digger takes more than one shot to get out of sandtrap.

Take Your Golf Game of Trash Talk to a New Level and Bet on Having Lots of Laughs

You will have a blast with your golf buddies. Simply agree on a value for each chip before teeing off. Golfers want the positives and avoid the negatives. New Grave Digger...takes you more than one shot to get out of the sand-trap. Your shot goes into the water - you get the water chip. Furthest from the pin on a Par 3...gets you the Beer Chip which puts you on the hook for a round when the Beer Cart comes by.

ONLY \$19.95
FREE TEE BAG
FREE SHIPPING
Order Now!



www.vegasgolfthegame.com





VIP GOLF CARS:



Family owned & operated for over 40 years!

Always designed, sourced & manufactured in the USA!

***Save up to 10% off standard dealer pricing when placing Advance orders in January, for Feb-March 2026 Delivery!

Body Kits Now Available in 7 Great Colors!

Including New Premium Edition Colors!
Honolulu Blue Pearl & Platinum White Pearl!

2026

ORDER NOW!



Our Products:

OEM Style Tempo &
Precedent Body Kits
84" Universal Tops with
optional Twin
Skylights/Moonroof
EZ-GO Dashes
Club Car Dashes
Cargo Tubs
Battery Trays
Other Accessories!



For more information, contact Gil Sadler at:



443-VIP-0511



gil@vaplastic.com



<https://vipgolfcars.com>

AROUND *the* MARKETPLACE



WIND GENIE



from ind Genie Golf | windgeniegolf.com

What is the Wind Genie?

The Wind Genie is an all new, revolutionary golf wind pointer tool, designed for all golf enthusiasts.

The Wind Genie answers the simple question every golfer asks before every shot... Which Way is the Wind Blowing?

By quickly attaching a Wind Genie to your golf cart, you will always know the exact answer to that question.

So next time you ask "Which Way is the Wind Blowing?" Remember... The Wind Genie Always has the Answer.

ENCLOSURE



from TopHat Cart Enclosures | tophatenclosures.com

Traditional golf cart enclosures are clumsy to setup, cumbersome to open, noisy to operate, made from flimsy materials, vulnerable to wind conditions, and unattractive.

TopHat Enclosures are made from premium materials, close with a one-handed operation and retracts automatically with the push of a button. The patented system is easy to install, use, and promotes a clean cart aesthetic, unlike traditional snap-and-zipper designs.

We have a functional, designed-for-manufacturing prototype, ready for demonstration.

Licensing opportunity for a patented, fully developed, retractable enclosure system that instantly transforms any cart from an open-air experience to a comfortable enclosed environment. Coming in 2027

AROUND *the* MARKETPLACE

CLUB PROTECTOR



from Club Protector | clubprotector.com

The Club Protector Retractable Enclosure(-
Shown Elite Version)

- No more rolling them up by hand.
- Adapts to any cart
- Lightweight - easy to store
- Made of Sunbrella canvas
- Excellent visibility
- Durable double stitch sewing
- Ease of operation
- Quick and easy access to clubs

ZEVO X



from BLP Moto | blp-moto.com

The ZEVO X is a premium 48V lithium golf cart built for comfort, style, and easy everyday use. The 4-passenger layout, durable seat material, and smooth 25 mph speed make it great for neighborhoods, properties, and resorts. The LED light group with DRL adds a clean look, and the touch screen display keeps controls simple. Alloy rims, hydraulic disc brakes, and adjustable steering give it a solid, confident feel on the road.

GRAND TOURING

GT280CCPR

!NEW PRODUCT ALERT!



"WONT RUST LIKE STEEL-
BREAK LIKE PLASTIC OR
GET SLIPPERY WHEN
WET"



AVAILABLE WITH:

- STANDARD SEATS
- CUSTOM SEATS
- NO SEATS TO INSTALL ON YOUR OWN

SHOWN WITH OPTIONAL
TRUNK



1-800-686-5978 or 573-581-4914 mmvehicles.com

Need Cocktails

A Must For The Diva Golfer



NEED COCKTAILS GOLF TOWEL

* Comes with a large easy to attach clip to fit any golf bag.



DUAL PURPOSE - Waffle style microfiber golf towel keeps your clubs clean while making sure you are never out of COCKTAILS!

Pink side with NEED COCKTAILS lets the beverage cart know you need a round. Green side with PAR TEE lets them know you are having fun and probably need more.

Simply drape your towel over the windshield to alert the Cocktail Cart you need a round.



www.VegasGolfDiva.com

NEED BEER

A MUST FOR ANY SERIOUS GOLFER



* Comes with a large easy to attach clip to fit any golf bag.



DUAL PURPOSE - Microfiber golf towel will keep your clubs clean and most importantly help make sure you are never out of BEER!

Green side lets the Beverage Cart know that you need a BEER! The red side lets them know you URGENTLY NEED MORE BEER!

Simply place your towel over the windshield to alert the cart girl that you guys need more BEER!

This automatically comes with a FREE BEER CHIP! See our website for Beer Chip Rules.

Vegas Golf the Game

www.VegasGolfTheGame.com

THE BEST LITHIUM GOLF CART BATTERIES

SIZES FOR EVERY GOLF CAR / LSV

36V ▷ 105Ah

▷ 65Ah

48V ▷ 105Ah

▷ 160Ah

▷ 210Ah

72V ▷ 105Ah



Allied Bluetooth app manages the health, history and current status of your lithium battery.



Become
a Dealer



- CAN bus and RS485
- Built-in Sleep Mode
- Solenoid for Long-term Storage
- 80X Faster Cell Balancing
- National Sales & Support Team
- Direct Dealer Purchasing

AUSTRALIA

Berckmans Acquires Augusta Golf Cars; Luke Roberts Named MD

In a significant move for the Australian golf and utility vehicle sector, Berckmans Pty Ltd has announced the acquisition of Augusta Golf Cars, a premier distributor of the E-Z-GO, Cushman, and Pace Technology brands.

The acquisition marks a new chapter for the company, which has built a nationwide reputation for serving golf clubs, resorts, and industrial operators. Berckmans, a consortium of investors with backgrounds in manufacturing and technology, cited a “shared love of golf” and a commitment to the industry’s long-term growth as the driving forces behind the deal.

Key Leadership & Strategy

- **New Managing Director:** Industry veteran Luke Roberts takes the helm, bringing over 15 years of experience in sales and operations within the leisure sector.
- **Strategic Focus:** The new ownership aims to preserve the company’s legacy of service while increasing investment in sustainability, fleet management technology, and system innovation.
- **Dealer Network:** The transition emphasizes a continued partnership with Augusta’s extensive national dealer network, which remains the cornerstone of its service delivery.

“Change in ownership often brings uncertainty. In this case, it brings confidence,” the company stated, noting that the transition is designed to ensure stability for long-term partners and commercial clients.

With a portfolio that spans from championship fairways to industrial campuses, Augusta Golf Cars is positioned to expand its footprint under Berckmans’ leadership, focusing on the evolving needs of the modern Australian golf market.

About Augusta Golf Cars

Augusta Golf Cars is the master distributor for E-Z-GO, Cushman, Textron Offroad and Textron Fleet Management in Australia and the Pacific Region.

Established in 2004, Augusta Golf Cars has grown throughout its tenure to become the number 1 supplier of golf and utility vehicles in Australia.

Augusta Golf Cars is located in Yatala, south of Brisbane, with branches in Melbourne and Sydney. With a well-established network of State and Sub Dealers located in all major centres and regional areas, Augusta Golf Cars are well positioned to supply and support vehicles anywhere in Australia.

“Change in ownership often brings uncer-

THAILAND

Fire hits golf cart repair garage in Nakhon Pathom

A fire broke out following an explosion involving a small battery at an electric golf cart repair garage in Kamphaeng Saen district of Nakhon Pathom on Saturday morning. No injuries or fatalities were reported.

The incident occurred at the business located in Moo 19 in Sa Simum subdistrict, said Pol Capt Traiphop Mongkhonsutjaritkul, a deputy investigation inspector at the Kamphaeng Saen police station, who was alerted at 6.20am.

Fire trucks and firefighters from Sa Phatthana and Sa Simum subdistricts and Kamphaeng Saen municipality were dispatched to the scene to contain the blaze.

Upon arrival, officers found the premises engulfed in intense flames, with explosions heard periodically.

The blaze was brought under control after an hour, and crews continued to spray water to cool down hotspots where smoke and flames were still flaring.

Phichawee Sirisantidamrong, the manager of the garage, said a cordless drill battery had

been left charging overnight. Shortly before the fire broke out, a loud sound resembling a battery explosion was heard.

When she rushed to check, flames were already emerging from the battery and rapidly spread to nearby vehicles, parts, tools, EV batteries and LCD screens.

Damage was estimated at about 600,000 baht.

[SOURCE](#)



A firefighter tries to contain a blaze that erupted following an explosion involving a cordless drill battery at a garage in Kamphaeng Saen district of Nakhon Pathom on Saturday morning. (Photo: rescuer Nonthawat Wisutthipat)

DOORWORKS®

— Golf Cart Enclosures —

PATENTS #6547304 & 6776445

HINGED DOOR ENCLOSURES



CLUB CAR



EVOLUTION

Including
2024+
RXVs



EZGO



ICON



YAMAHA



UTILITY CARTS



4 PASS CLUB CAR



4 PASS EZGO

Including
2024+
RXVs



4 PASS ICON



4 PASS EVOLUTION



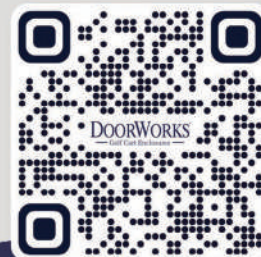
6 PASS EZGO



6 PASS ICON

DoorWorks Hinged Door solutions for over 60 vehicles!

- **Easy Install:** includes detailed instructions and hardware.
- **Versatile Hinged Doors:** The DoorWorks doors can be lock closed, locked open with the Over-the-Top standout latches, or removed all together.
- **Available 2, 4, 6 and 8 Passenger Vehicles.**
- **Made for popular models including Club Car, EZGO, Evolution, ICON, AdvancedEV, Yamaha and more.**



1-866-888-3667



Orders@DWParts.com

BECOME
A DEALER

Golf Bag Racks!



Round Tube

OWGOLFB -
Onward Golf Bag
Attachment



OWGOLFB6 - Onward Golf
Bag Attachment with 6" drop



RXVGOLFB - RXV
Golf Bag Attachment



1-800-686-5978 573-581-4914 Fax 573-581-2046

Manufacturers of Specialty Vehicles and Components

19873 HWY 22 West Mexico, Missouri www.mmvehicles.com





secure peace of mind

WITH GOLF CART INSURANCE

Are you a proud golf cart owner who loves to explore the neighborhood, cruise through parks, or run errands in your stylish ride? If so, it's time to consider a game-changing investment—golf cart insurance, tailored specifically to you. Here are a few reasons why golf cart insurance is a wise decision.

Peace of mind

Golf carts are not exclusively golf course companions but versatile vehicles for many occasions. Whether you're traveling within your community or navigating local paths, golf cart insurance provides coverage in case of unforeseen events, ensuring your peace of mind while you're on the go.

Protect your golf cart

Your golf cart is a valuable investment that deserves protection. With comprehensive and collision coverage, you can rest easy knowing that repair or replacement costs will be covered in the event of certain damage, theft, or accidents. Keep your ride in top condition without breaking the bank.

Be prepared for the unexpected

Accidents can happen anywhere, and being prepared is crucial. Golf cart insurance provides liability coverage, protecting you financially up to specified limits in case you accidentally cause property damage or injury to others while cruising around your community.

Homeowners insurance

Homeowners insurance may provide some coverage for your golf cart, but it often has limitations and can have a more costly deductible. A dedicated golf cart insurance policy ensures that you're adequately covered specific to your needs.

Family and friends

Policies can provide off-premises and permissive use, allowing you to confidently have friends and family drive your golf cart occasionally. You also have the option to add minor operators as drivers, so you can rest easy knowing that you have the right protection if something goes wrong.

Personalized protection

Your golf cart usage is unique to you. That's why specialized insurance is tailored to meet your specific needs, ensuring you can choose coverage options like accessory and custom parts/equipment coverage to provide protection if you've made enhancements or upgrades to your golf cart.

Legal compliance

Some areas mandate insurance coverage for golf carts. Stay on the right side of the law and avoid potential fines or penalties by securing the necessary insurance for your ride.

Investing in golf cart insurance is a smart decision that goes beyond mere protection; it's about enjoying your rides worry-free. Don't let unexpected events derail your joyrides—secure your golf cart insurance and roll into every adventure with confidence!

PROGRESSIVE

Progressive Casualty Ins. Co. and affiliates
Coverages are subject to policy terms and conditions.

Scan to get a quote

Go to progressive.com
to learn more.



Dealer Profile Of The Month

TIGON GOLF CARTS
tigongolfcarts.com
302-546-0010
Dover, Delaware



TIGON Golf Carts announces continued expansion as a full-service electric golf cart and low-speed vehicle dealership serving residential, commercial, and recreational communities throughout Delaware. Based in Dover, the dealership supports transportation needs across Kent County, Sussex County, and New Castle County through a growing portfolio of electric mobility solutions designed for local use.

The dealership provides a range of electric golf carts and street-legal low-speed vehicles suited for neighborhoods, coastal areas, campuses, resorts, and managed properties. Available vehicle categories include new and pre-owned golf carts, low-speed vehicles, neighborhood electric vehicles, mobility support vehicles, and utility models developed for daily transportation and short-distance travel.

In addition to vehicle availability, TIGON Golf Carts operates as a comprehensive service provider, offering professional sales guidance, technical repairs, maintenance support, rentals, and vehicle customization. Customization services are structured to address local driving conditions, safety considerations, and functional



requirements commonly associated with Delaware's residential and coastal environments.



A strong emphasis is placed on electric mobility standards, operational reliability, and vehicle performance. These priorities support the growing demand for efficient transportation solutions in expanding residential developments, planned communities, and mixed-use areas across the state. Service operations are supported by trained staff with experience in electric vehicle systems and long-term maintenance planning.

As part of its continued growth, TIGON Golf Carts maintains a focus on dependable customer support, compliance awareness, and practical vehicle solutions designed for everyday use. The dealership's expanding presence reflects increased interest in electric transportation options that align with community infrastructure and modern mobility expectations.

ABOUT:

At TIGON, we're passionate about crafting premium golf carts that redefine the experience of traversing the course. With a rich heritage rooted in a love for the game, we've honed our expertise over the years to engineer carts that seamlessly blend performance, style, and reliability.

Our commitment to quality is unwavering. Each TIGON Golf Cart is meticulously designed and built to exceed expectations, ensuring a smooth and enjoyable ride every time. From the cutting-edge technology powering our carts to the attention to detail in every stitch of upholstery, we prioritize excellence in every aspect of our craftsmanship.

But TIGON is more than just a manufacturer of golf carts; we're a community united by a shared passion for golf and a dedication to enhancing the game for players of all skill levels. Whether you're a seasoned pro or a weekend warrior, our carts are designed to elevate your experience on the course, providing unparalleled comfort, performance, and convenience.

With TIGON Golf Carts,

you're not just investing in a mode of transportation; you're investing in a legacy of innovation and a commitment to excellence. Join us as we continue to push the boundaries of what's possible in the world of golf carts, and experience the TIGON difference for yourself. Welcome to the future of golfing mobility. Welcome to TIGON.

Company Information

TIGON Golf Carts

5158 N Dupont Hwy

Dover, DE 19901

Phone: 302-546-0010

[https://tigongolfcarts.com/dover/
contact@tigongolfcarts.com](https://tigongolfcarts.com/dover/contact@tigongolfcarts.com)

[SOURCE](#)



EXPECT MORE FROM YOUR TIRES
EXPERIENCE NEXT LEVEL COMFORT AND PERFORMANCE



ROUTE 66® CRUISER
205/40R14

ROUTE 66® CRUISER
23x10R14

ROUTE 66® CRUISER
245/40R12

ROUTE 66® CRUISER
23x10R12

ROUTE 66® CRUISER
20x10R10



Driving the Future!

**SALES, SERVICE,
PARTS, RENTALS**

GOLFCARTPEOPLE.COM

780-430-0400

5525 92ST EDMONTON, AB



LSV/Golf Cart Meets Technology

This section explores the latest technological advancements shaping the golf cart industry. From smart connectivity and enhanced performance systems to innovative safety and energy solutions, we cover it all. Learn how new technology is transforming the way golf carts are built, driven, and maintained. Stay ahead of the curve with insights into the future of golf cart innovation.



Textron E-Z-GO LLC
Launches New Pace Technology Onyx™ In-Vehicle
Solution

Textron E-Z-GO LLC, a Textron Inc. (NYSE: TXT) company, announces Onyx™, the next generation in-vehicle solution for its Pace Technology® platform. Available on E-Z-GO® and Cushman® ELiTE series vehicles, Onyx provides an industry-leading ultrawide high-definition screen with pinpoint GPS positioning accuracy, further enhancing the on-course experience for golfers and providing course operators with additional capabilities to manage their facilities and engage their customers.

Onyx's widescreen UW1080 display, with significantly more screen area than Pace's 10EX screen, enables golfers to quickly scan and use multiple features and sources of information, including course layout, green views, pace-of-play information, music controls, and more. For facilities that require the best in precision vehicle tracking, Onyx™ features optional real-time kinematic positioning (RTK,) augmenting satellite data with a fixed base station to enhance the accuracy of its real-time GPS location-tracking down to centimeters. This provides golfers with incredibly accurate yardages to the hole, especially when paired with Pace Technology's integration with GolfLogix™, which provides real-time data for more than 35,000 courses.

Course operators also benefit from Onyx's incredible accuracy, with even better real-time location of every tracked vehicle and piece of equipment on their course, and enhanced geofencing capabilities to keep golfers out of restricted areas. New directional geofences help manage traffic patterns. And the precision of Onyx's RTK option helps to reduce instances of inadvertent "cart-locking" due to GPS signal drift in tightly geofenced areas, further improving the on-course experience for the golfer.

Operators can use Onyx's customizable on-screen widgets to build a unique experience tailored to their course, creating more engagement with golfers and keeping staff in control of pace-of-play and the on-course experience.



Designed and built to integrate with E-Z-GO and Cushman vehicles, Onyx fits neatly under the vehicle's top, providing for easy viewing without obstructing the driver's field of vision.

Onyx maintains all existing features and benefits of the Pace Technology software platform, which uses advanced GPS-based technology and is accessible to course operators through a multitude of devices, including desktop and laptop computers, tablets and smartphones. Operators can monitor vehicle usage on their property, track location and activity, and engage in two-way communication with drivers if needed through audible alerts and in-vehicle screens.

In addition to limiting vehicle speeds in high-traffic areas using enhanced Speed Control, operators also can restrict vehicle usage in and around sensitive areas, such as water features and ornamental beds. Managers can easily add or alter new geofenced zones as needed, and provide different levels of privileges for specific users and vehicles. Operators also can use the system to enhance the on-course experience for golfers through features such as food-and-beverage ordering, live weather alerts and radar, and digital scorecard functionality. Pace Technology integrates with several leading course-management platforms to give operators a seamless solution for managing their operations from the moment a tee time is booked through the completion of a golfer's round.

Onyx will be available in the second quarter of 2026. For more information about Onyx and the Pace Technology platform, visit pace.txtsv.com.

About Pace Technology

Pace Technology products provide innovative solutions to enhance how golfers and golf-course operators experience their courses. Pace streamlines golf course operations and elevates the golfer's experience through con-

nected software and hardware solutions. Pace Technology products and services are offered by Textron E-Z-GO LLC, part of the Textron Specialized Vehicles business of Textron Inc.

About E-Z-GO

Tracing its roots to the founding of the E-Z-GO Golf Car Company in Augusta, Ga. in 1954, Textron E-Z-GO LLC is a globally renowned leader in the design and manufacture of golf cars and personal transport vehicles, known for its use of innovative sustainable electric-vehicle and powertrain technology. E-Z-GO models include RXV® fleet and personal golf cars; E-Z-GO Express™ personal transportation vehicles, and the Liberty™, which offers four forward-facing seats in a compact, golf-car-sized footprint. E-Z-GO became part of Textron Inc. (NYSE: TXT) in 1960, and today operates as part of the Textron Specialized Vehicles business of Textron Inc. For more information, visit ezgo.com.

About Textron

Textron Inc. (NYSE:TXT) is a multi-industry company that leverages its global network of aircraft, defense, industrial and finance businesses to provide customers with innovative solutions and services. Textron is known around the world for its powerful brands such as Bell, Cessna, Beechcraft, Pipistrel, Jacobsen, Kautex, Lycoming, E-Z-GO and Textron Systems. For more information, visit: www.textron.com.

Motor RPM & Speed Calculator

SHELBY CONTROL SYSTEMS

<https://gaminde.net/speed-calculator.php>



This interactive Speed Calculator will allow you to check what the top speed of your cart should be with all the different speed codes.

In addition, it will allow you to input the max rpm's of any motor and you can determine what speed your cart will achieve.

Don't Forget To Check Out Our Controller Rebuild/Repair Page!

FANTASY CUSTOM GOLF CARTS

419-215-7417



**5559 W Alexis Rd
Sylvania, OH 43560**

SALES

SERVICE

PARTS

ACCESSORIES



We pride ourselves on creating high quality, truly unique custom golf carts and providing top notch customer service. Stop in and let us build you the cart of your dreams!



From Basic to Way Beyond We Build it All



Ask us about our bluetooth sound systems!



www.fantasycustomgolfcarts.com

facebook.com/fantasycustomgolfcarts



Planning to Buy a Used Golf Car? Read This First

I love participating in online golf car forums and golf car Facebook groups. Seeing photos of custom builds and keeping up to date about golf car products and issues is fun. Sometimes I can offer some helpful advice and sometimes I am the one learning from others.

But, every once in a while, I come across something in those groups that makes me cringe.

Last week I was participating in a conversation about the likelihood of restoring golf car batteries after they are already dead. The group discussed whether the battery cell was bad, how to trickle charge them individually and a number of other tricks that golf car owners resort to when trying not to fork over money for new batteries.

Here is where it gets cringe worthy. It was revealed that the person who started the group conversation is building this golf car in his home garage to sell on Craigslist. When I found that out, I asserted that he should definitely replace the batteries if he is building the golf car to resell. It is the right thing to do! It is terrible business to pass off a golf car that is shiny and new on the outside, but will not run for more than a few weeks. It is unethical to allow someone to pay top dollar for a custom golf car when the seller knows that the batteries are bad and will fail.

What was his response? He claims that since he is building this golf car (and others) in his home garage without a business license, he is not a business so he operates under "Buyer Beware." He continued to explain that if a buyer is ignorant about golf car batteries and does not know what to look for, it is their problem.

What is the Lesson?

Besides learning that this guy (and many others like him)

is a smudge on the reputation of the golf car industry, if you decide to purchase a golf car from a local seller and not an actual business, here is what to look for:

1. Rust

EZGO golf cars are notorious for rusting frames, especially in humid climates or areas close to sea water. Don't be afraid to get down under the golf car a bit and make sure that the frame is not badly rusted. If you do live in a humid area, Club Car golf cars may be the way to go.

2. Battery Condition

Never take the seller's word for the age or condition of the battery pack. Make sure that you put your own eyes on the battery date stamp. If the batteries look swollen, even a little bit, they will not last long. If the terminals are corroded, the batteries have not been properly maintained and you should not trust that they will last. If the batteries do not match (they are different brands or different ages), the battery pack is likely not operating at optimal performance and you should either pass on the golf car or plan to install new batteries.

3. Rubbing (of any kind)

If the body rubs, or the tires rub on the body or the rear seat kit rubs at all, you will have some issues. Rubbing can indi-

cate that the leaf springs are worn, that the tires are too big, that the lift kit was not installed correctly, or that the frame has been bent in an accident. Whatever the reason for the rubbing, you will likely need to repair something soon if you buy this golf car.

4. Age of the Golf Car

Check the serial and find out the age of the golf car. Even if it has been cleaning up nicely with a new body or brand new batteries, you may not want an older golf car. It may be difficult to find custom or replacement parts and accessories for golf cars that are older than 10 or 15 years. Some parts are simply not manufactured any longer or are so rare that they are expensive.

If you get a feeling that you are being ripped off, you probably are. Unless you know your stuff when it comes to golf cars, stick to buying from reputable dealers and custom golf car builders that are licensed and insured.



About the Author: The Founder/Former Owner of WHEELZ Custom Carts & Accessories, Julie Starr, was one of the industry's first online retailers of golf car products. The eCommerce store, www.WHEELZLLC.com, has served golf car owners since 2008 and remains a popular online shopping experience for golf car owners who want to take their golf cars to the next level.



ARE YOU LOOKING FOR?

WHOLESALE GOLF CARTS

- 10,000's of Carts Available
- 24/7 Password Protected Inventory
- Nationwide Shipping
- Text Alerts for Hot Deals

Contact Us
(904) 902 - 5039

Website
xitoutdoorsllc.com

Email Us
info@xitoutdoorsllc.com

 \$200 off freight when you mention this ad.



Scan for Dealer Access

C&S CUSTOM GOLF CARTS

Authorized Dealer For AllSportLiftKits.com

**Lift Kits • Tires & Wheels • Seat Covers
Motors • Electric & Gas**



**cscustomgolfcarts@hotmail.com
www.cscustomgolfcarts.jimdo.com
314.704.3655**

STYLE YOUR CART WITH GMT

E-Z-GO RXV (patented design) FULL Dashes & Trim Plate



EZ RXV DASH

EZ RXV DASH

EZ RXV Gauge TRIM plate

GMT dashboards for all major brands promote quick trouble-free installation. Available in all of GMT's popular colors. Club Car dashes available in two and four-cup holder models as above.

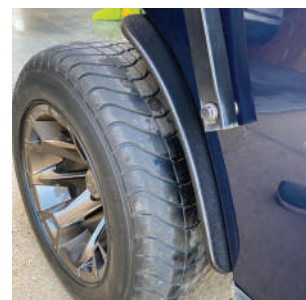
Yamaha Drive RADIO Adapter Series 200 Fit 2017 -up. Patent Pending

- Adds automotive styling and convenience
- Easy installation, just remove factory cup holder and replace with Series 200 dash radio adapter
- Precut opening for single din radio
- Includes 2 built-in coin holders
- Designed to fit with or without our Series 900 full dash
- Available in all colors (shown in dark wood grain)



AVAILABLE for E-Z-GO RXV, TXT, TXT 2015-up, Club Car Precedent, DS, Yamaha Drive, Star Car and equivalent

Protect lifted cart bodies and custom finishes from the hazards of rugged terrain with the original **GMT designed and manufactured FENDER FLARES.**

E-Z-GO TXT 2015-up
FRONT Flare

Club Car & Yamaha FULL Dashes



Club Car DASH

Yamaha Drive DASH

Yamaha '17 Drive DASH

Series 800 Club Car Precedent DOOR PANELS

Also Available for 2008-up

Series 800 Club Car Precedent **DOOR PANELS** saves on installation time over full dashes. Easily installed in the field - no need to remove factory key switch, oil/battery indicator light, cup holders, ball holder or steering wheel. Available in many color options.



Precision made GMT Locking **GLOVE BOX DOORS** cut installation time from as much as an hour to as little as a few minutes. Now available for Star Car and equivalent.

Another Great Idea From GMT.

Pictured right. Patent pending

Repairing a damaged Club Car Precedent rear body panel requires time consuming disassembly of the entire section of the cart. Installed on-site in minutes, automotive style GMT **BUMPER COVER** custom molded specifically for the Precedent model covers up frequently damaged rear body panels while providing added protection against future cracks, scratches and abrasions. Heavy duty plastic is substantially stronger, more durable than original equipment.

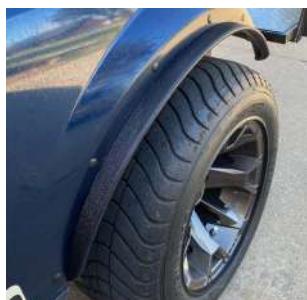


GMT
GOLF CART ACCESSORIES

THE VALUE LEADER IN CUSTOM ACCESSORIES. GMT delivers greater value through innovative design features. Automotive quality and precision, plus faster, easier installation. PROMPT delivery, most orders shipped SAME day from our large inventory.

All new patented design FENDER FLARES from GMT feature

- New underbody mount design
- Works well with standard or lift-ed car, approximately 2" wide
- Patented design maintains full wheel opening and factory body lines
- Installs in minutes with included hole templates and plastic push fasteners



**E-Z-GO TXT 2015-up
REAR Flare**

Check out GMT's New Patent Pending Design. Compact, Easy To Install Roof Mount Radio Consoles - Made In USA



E-Z-GO RXV G1



E-Z-GO RXV G1



Yamaha Drive

- Lower cost design compared to our full size radio console
- Compact, low profile unit is designed to fit tight against roof with less sight obstruction

Available for
E-Z-GO TXT, RXV (1st & 2nd Gen, roof)
Yamaha Drive, G22

All units available as a complete turnkey kit (radio, speakers and antenna) or speakers and radio may be purchased separately. Call for pricing.

Units available in all colors, Black, Dark Wood Grain, Carbon Fiber, Turned Titanium, Autumn Teak, Mahogany.

**Beware of cheap imitations
Accept only USA-made GMT products**

Select accessories now available in a variety of camouflage finishes.

CLUB CAR PRECEDENT BUMPER COVERS.



WOODY KIT. Series 1200

Available in Two-Tone finish only for Club Car, DS, Precedent, E-Z-GO, and Yamaha



OVERHEAD RADIO CONSOLES fit all major golf cars. Special features include: a unique underneath storage compartment, and a deeper configuration for simplified installation.



Series 1000



Series 400

Units now come with radio cutout and 5" speaker cutouts. Now available for Club Car Precedent, Yamaha 2003 and up and Yamaha Drive. Call about our new low cost, easy install radio consoles for E-Z-GO TXT, RXV, Yamaha Drive and G22.

**Custom Finishes
Including Camouflage
Now Available**

Dark wood grain

Carbon Fiber

Black

Camo

All GMT products are available in: Dark Wood Grain, Carbon Fiber, Woody, Autumn Teak, Mahogany, Turned Titanium, Black and Camouflage Finishes. Same day shipping on in-stock items.

**The world's finest
American made
custom golf car
accessory supplier.**

180 S Melrose Avenue Elgin, IL 60123

847-697-8161 • Fax 847-697-8176
www.gmtplastics.com

We accept:



Plugged In: LSV/Golf Cart Energy Trends

This section covers everything you need to know about golf cart batteries — from traditional lead-acid to cutting-edge lithium technology. We explore performance, maintenance, safety, and emerging innovations shaping the industry. Whether you're a dealer, technician, or golf cart owner, you'll find insights to keep your carts running at peak power.

What Are the Best Golf Cart Battery Chargers?

TABLE OF CONTENTS

- What Makes the Best Golf Cart Battery Charger
- Best Golf Cart Battery Chargers for Different Battery Types
- How to Choose the Right Golf Cart Battery Charger
- Common Mistakes to Avoid When Buying a Golf Cart Battery Charger
- Best Golf Cart Battery Chargers by Voltage System
- Best Lithium Golf Cart Battery Chargers

Best Lithium Golf Cart Battery

- Brand
- Conclusion

A golf cart battery charger is not a universal accessory. Using the wrong charger can shorten battery life, reduce driving range, or even trigger safety protections that shut the system down.

Many golf cart owners are gradually discovering that their carts are no longer charging properly. Some find that charging times have increased, while others find that the battery never fully charges. This is because one often overlooked fact is that the battery charger is just as important as the battery itself.

What Makes the Best Golf Cart Battery Charger

The best golf cart battery charger is defined by how accurately and safely it works with your specific battery system, not by brand name or charging speed alone. A high-quality charger should meet several core criteria:

- **Correct voltage matching:** The charger must match your cart's system voltage and reach the correct full-charge voltage.
- **Battery type compatibility:** Lead-acid and lithium batteries follow completely different charging profiles. Usually, chargers are designed specifically for one chemistry and never attempt to adapt between the two.
- **Smart charging logic:** High-quality chargers regulate current and voltage automatically, typically using a constant-current to constant-voltage (CC-CV) strategy, then stopping the charge completely once the battery is full.
- **Charging efficiency and current output:** Faster charging can be helpful, but excessive cur-

rent accelerates heat buildup and long-term cell wear. A well-designed charger balances charging speed with battery health.

- Connector and cart compatibility: The charger should physically and electrically match common golf cart platforms, including popular models from EZGO, Club Car, and Yamaha.
- Built-in safety protections: Over-voltage, over-temperature, short-circuit, and reverse-polarity protection are essential for daily and unattended charging.
- Long-term stability and reliability: The best battery chargers maintain consistent voltage accuracy across thousands of charge cycles without overheating or performance drift.

Best Golf Cart Battery Chargers for Different Battery Types

Golf cart batteries generally fall into two categories: traditional lead-acid batteries and lithium LiFePO4 batteries. Each requires a charger designed around its chemistry.

- Lead-acid batteries rely on multi-stage charging (bulk, absorption, float) to reach full capacity and maintain it safely.
- Lithium batteries, by contrast, require precise voltage cutoff and do not tolerate float or trickle charging.

Using a lead-acid charger on a lithium battery is one of the most common causes of premature battery wear and BMS shutdowns.

Charger Requirements by Battery Type

Battery Type	Charger Requirement	Float Charging	Risk If Mismatched
Lead-Acid	Multi-stage charging	Required	Sulfation, reduced capacity
Lithium (LiFePO4)	Precise voltage cutoff	Not allowed	BMS protection, shortened lifespan

Please note the charger logic to battery chemistry. Even when voltage appears correct, incompatible charging behavior can quietly reduce usable battery life.

How to Choose the Right Golf Cart Battery Charger

Once battery type and voltage are confirmed, the next step is selecting a charger that fits how and where the cart is used. Key decision factors include:

- Usage frequency: Occasional residential use may not require fast charging, while daily or commercial use benefits from higher-output, stable chargers that reduce downtime.
- Application scenario: Private carts, resort fleets, golf courses, and community vehicles all have different charging windows and operational demands.

Plugged In: LSV/Golf Cart Energy Trends

Dr. Emma Larson is a seasoned lithium battery expert with over 15 years of experience in energy storage solutions. Holding a Ph.D. in Materials Science from MIT, she specializes in optimizing battery performance for golf carts, RVs, solar systems, and marine trolling motors. Passionate about sustainable energy, Emma enjoys sharing practical insights and industry expertise.

- Operating environment: Cold climates require chargers that respect lithium low-temperature charging limits, while hot environments benefit from robust thermal management.
- Charging time expectations: Higher-amp chargers reduce charge time but should stay within safe current limits for the battery's capacity and design.
- Smart features and monitoring: LED indicators, display panels, or app-based monitoring make it easier to track charging status and detect issues early.

Golf Cart Battery Charger Selection Considerations

Selection Factor	Lead-Acid Batteries	Lithium LiFePO4 Batteries
Charging Voltage Tolerance	More forgiving; slight over/under voltage acceptable	Very strict; precise cutoff voltage required
Typical Full-Charge Voltage (48V system)	~59–60V (with float stage)	~58.4V (no float charging)
Charging Method	Multi-stage with float/maintenance charging	CC-CV with full termination
Recommended Charger Current	Lower current preferred for longevity	Moderate to higher current acceptable if controlled
Usage Frequency Suitability	Better for occasional or low-use carts	Well suited for daily or high-use carts
Temperature Sensitivity	Less sensitive to cold charging	Charging below 32°F requires protection
Smart Monitoring Value	Helpful but not essential	Strongly recommended for system visibility
Risk of Using Wrong Charger	Gradual capacity loss	Immediate BMS shutdown or long-term damage

Lithium golf cart batteries demand far greater charging precision than lead-acid batteries. While lead-acid systems can tolerate slower charging and broader voltage ranges, lithium batteries rely on accurate voltage control, clean charging termination, and well-matched current levels to operate safely.

Common Mistakes to Avoid When Buying a Golf Cart Battery Charger

Many charger problems come from simple but costly assumptions. Common mistakes include buying based solely on connector appearance, reusing an old charger after upgrading to lithium batteries, or assuming higher amperage always means better performance.

Another frequent error is using automotive or generic power chargers not designed for golf carts. These often lack the voltage stability and safety protections required for deep-cycle battery systems, increasing the risk of long-term damage.

Best Golf Cart Battery Chargers by Voltage System

Voltage defines the entire charging process. As system voltage increases, charging accuracy becomes more critical, and tolerance for error decreases.

- 36V systems: Typically found in older or light-duty carts. These systems are more forgiving but still require chargers that reach the correct full-charge voltage of about 43.8V for lithium batteries.
- 48V systems: The most common modern configuration, balancing efficiency, range, and power. Chargers must maintain tight voltage control around 58.4V to avoid under- or overcharging.
- 72V systems: Used in high-performance carts. These systems demand the highest charging precision, as errors are magnified at higher voltage levels.

Golf Cart Voltage Systems and Charger Applications
As voltage increases, charger accuracy and build quality become more important. High-voltage systems benefit the most from purpose-built, high-quality chargers.

Best Lithium Golf Cart Battery Chargers

For lithium golf cart batteries, below are three lithium-specific chargers from Vatrer, each designed for a specific voltage system and real-world usage needs.

System Voltage	Full Charge Voltage (Lithium)	Typical Charger Current	Common Use Cases
36V	~43.8V	20-25A	Older carts, light-duty use
48V	~58.4V	18-22A	Most modern golf carts
72V	~79.2V	15-18A	High-performance carts

36V LiFePO4 Charger

- Stable Voltage: Delivers a stable output of 8V / 25A, precisely matching the full-charge voltage required by 36V lithium systems to ensure complete charging without voltage deviation.
- Wide AC input voltage range (90-260V AC): Allows the charger to operate reliably under different regional grid conditions, even where the power supply may be unstable or fluctuate.
- Intelligent charging control: Uses a smart charging

process (typically multi-stage control), starting with constant current and transitioning to constant voltage before stopping automatically.

- BMS-coordinated charge termination: Charging stops based on battery status, improving overall charging safety and helping maintain long-term battery health.
- Compatible mainstream 36V golf cart: Works with most 36V lithium golf cart batteries on the market, offering flexible installation and broad compatibility.

For users with higher daily usage frequency, it reduces charging time without increasing the risk of overcharging or premature battery aging, making it a practical standard charger for 36V lithium batteries.

48V LiFePO4 Charger

- Stable Voltage: Provides 58.4V / 20A output, fully aligned with the charging requirements of 48V LiFePO4 battery systems.
- AC-DC intelligent charging: Employs a refined charging process, constant current,

Plugged In: LSV/Golf Cart Energy Trends

Dr. Emma Larson is a seasoned lithium battery expert with over 15 years of experience in energy storage solutions. Holding a Ph.D. in Materials Science from MIT, she specializes in optimizing battery performance for golf carts, RVs, solar systems, and marine trolling motors. Passionate about sustainable energy, Emma enjoys sharing practical insights and industry expertise.

constant voltage, then automatic termination to reduce electrical stress on the battery.

- Wide voltage range (90-260V AC): Ensures consistent charging performance even when operating in regions with variable or lower-quality power supply.
- Multiple built-in protection mechanisms: Includes typical safety protections such as over-voltage, over-temperature, short-circuit, and reverse-polarity protection.

It is well suited for carts that undergo frequent charge and discharge cycles or operate in environments where consistent charging performance is critical.

72V LiFePO4 Charger

- High-voltage output: Delivers 79.2V / 18A, with a maximum output power of approximately 1400W, ensuring accurate and stable charging for 72V golf cart batteries.
- Three-stage intelligent charging: Uses a controlled charging sequence (constant current - constant voltage - termination), helping the battery transition safely from a low state of charge to full capacity.
- Comprehensive safety protection: Built-in safeguards against overload, overheating, short circuits, and

reverse connection reduce the risk of charging-related failures.

- Wide AC input compatibility (90-260V AC): Allows stable operation across different regions and power conditions without the need for additional voltage regulation.
- Active cooling and durable enclosure design: Equipped with active cooling and a rugged housing with IP66-rated protection, improving durability in outdoor or demanding operating environments.

It supports faster charging for high-capacity 72V lithium batteries while reducing the risks associated with high-voltage operation, making it an excellent choice for high-performance or long-range lithium golf carts. Best Lithium Golf Cart Battery Charger Brand

When selecting a golf cart battery charger brand, the key consideration is whether the charger is designed specifically for lithium battery systems rather than as a generic power device. Vatrer Power develops lithium golf cart chargers with a system-matching approach, aligning output voltage and current precisely with the requirements of LiFePO4 batteries and their corresponding voltage platforms. This reduces the risks associated with universal chargers, such as improper charging

behavior and gradual battery degradation.

Vatrer chargers also apply an intelligent charging strategy tailored to lithium battery characteristics. Instead of simple time-based charging, they follow a controlled charging curve that transitions from regulated current to stable voltage and then stops automatically at full charge. This method minimizes charging stress, helps preserve usable capacity, and supports longer battery service life.

In addition, Vatrer emphasizes safety and durability for real-world use. Our chargers integrate multiple protection mechanisms, wide AC input compatibility, and effective thermal management, allowing stable operation across different environments and power conditions.

Conclusion

The best golf cart battery chargers are defined by compatibility, precision, and reliability, not by charging speed alone. Choosing a charger that matches your battery type, voltage system, and usage environment directly affects battery lifespan, safety, and daily performance.

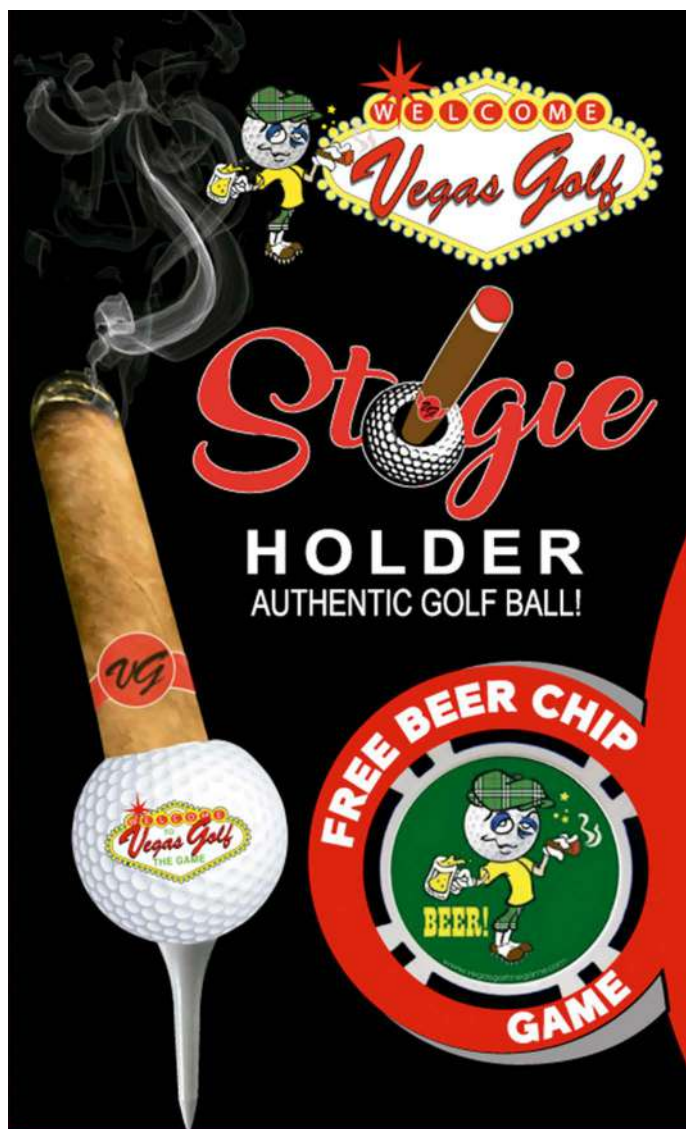
OEM **YAMAHA** **PARTS & ACCESSORIES**



Full details of free shipping offer on website



yamahagolfcarparts.com



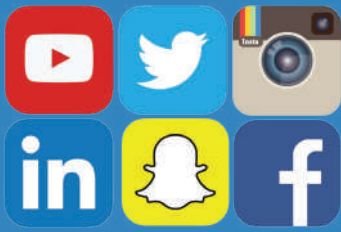
**Fits in any Golf Cart
Tee Holder**

www.VegasGolfGame.com

THE SOCIAL

tagus!

#GOLFCAROPTIONS on Instagram
and you just may see
yourself featured here



SCENE

INSTAGRAM FIND

[eastvalleygolfcarts_florence](#)

[East Valley Golf Carts](#)

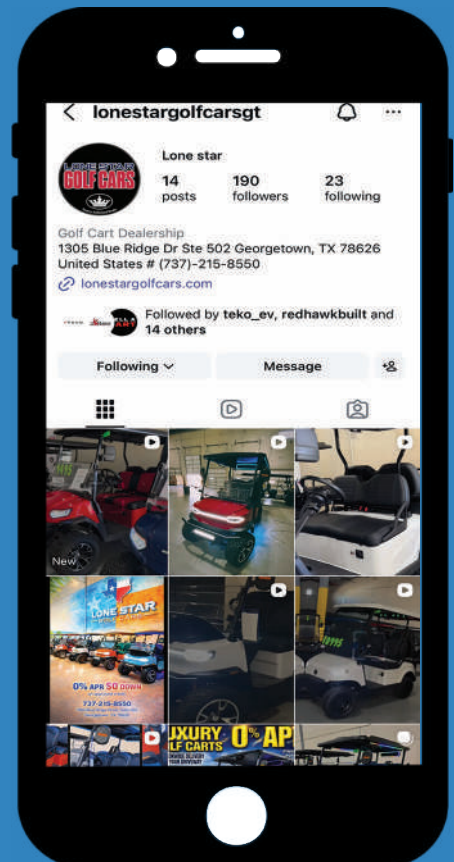
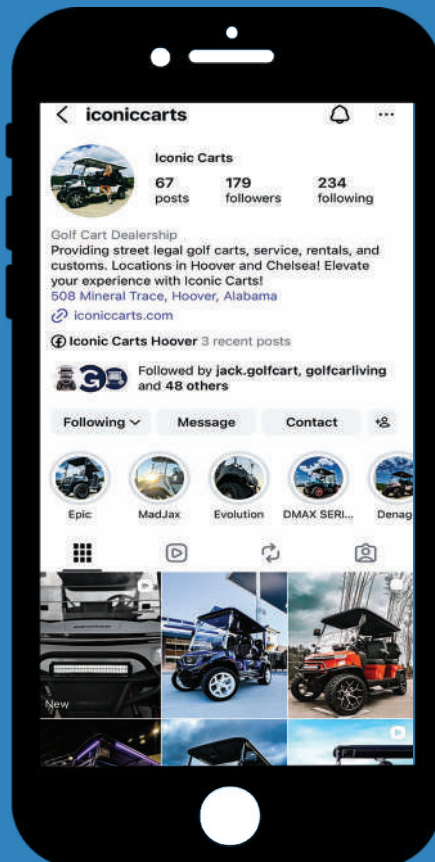
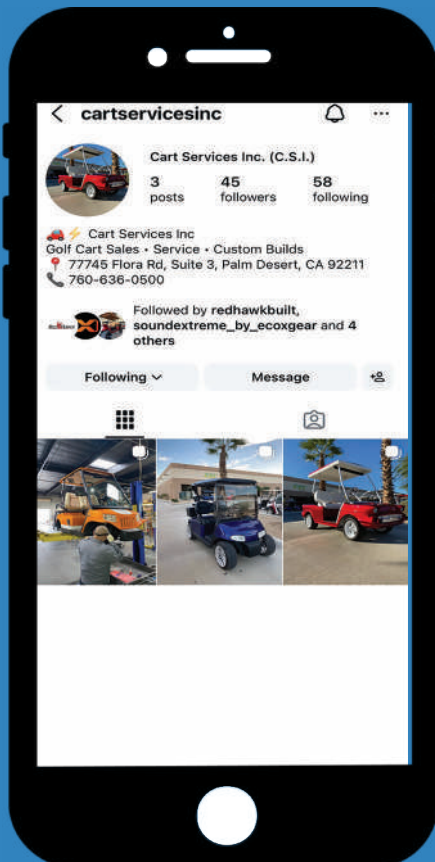
We're honored and beyond excited to announce that we've taken home Best in Class – Large Display award here @barrett_jackson. This win is a direct reflection of the incredible team behind it. We're truly grateful for every single one of you. Kicking off 2026 the right way—let's keep raising the bar.



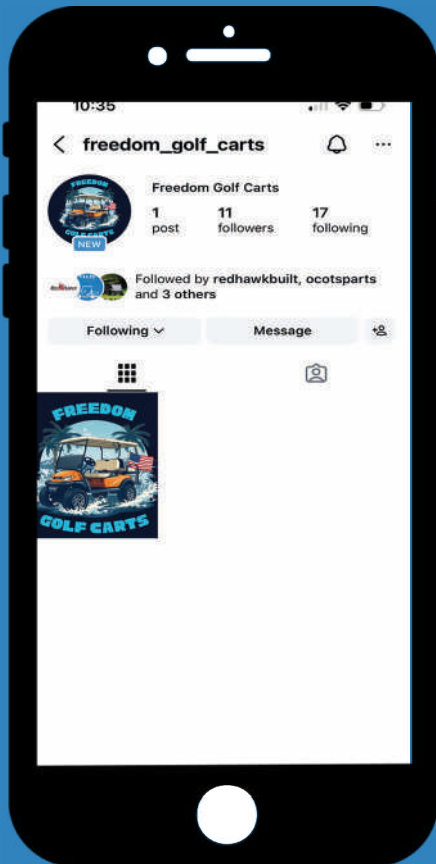
@cartservicesinc

@iconiccarts

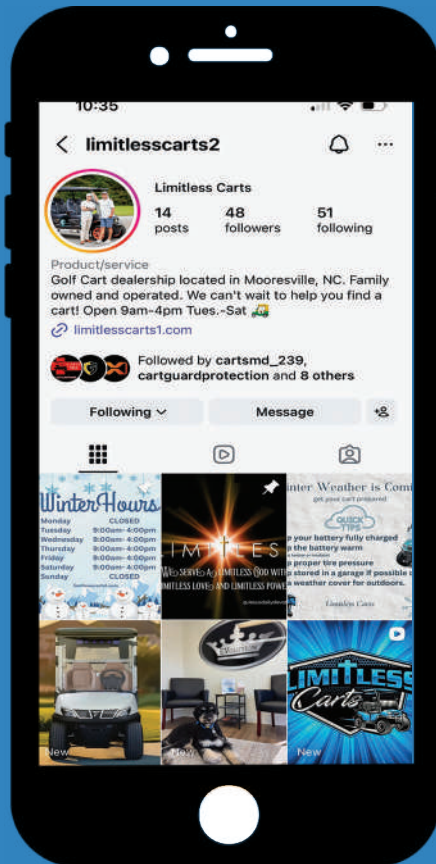
@lonestargolfcarts



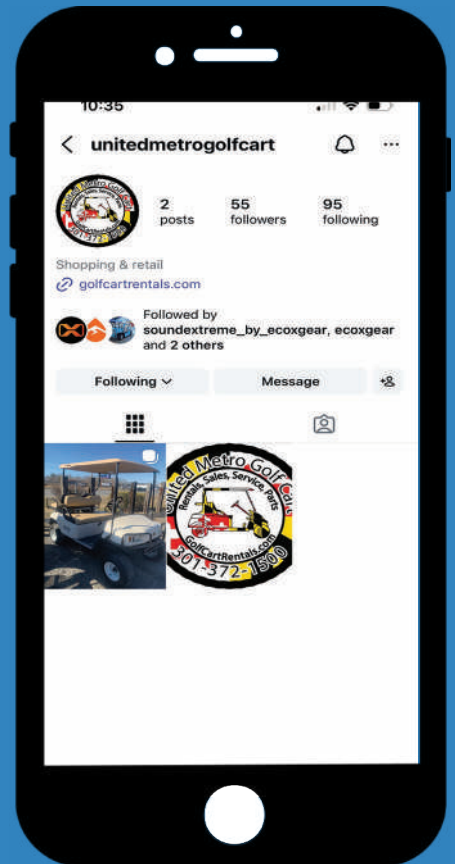
@freedom_golf_carts



@limitlesscarts2



@unitedmetroglfcart



You Tube

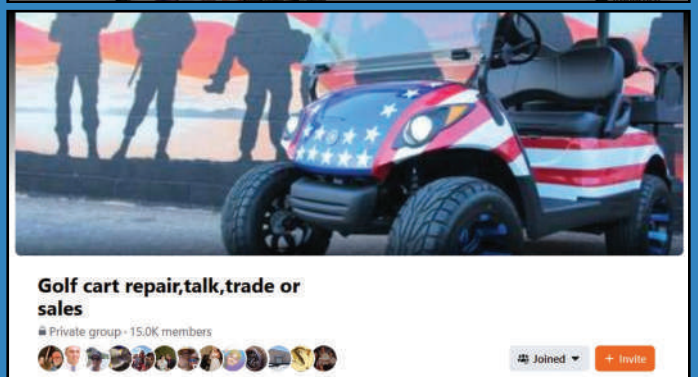
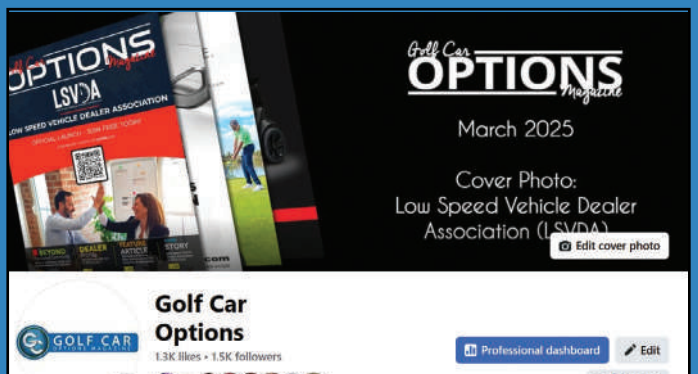
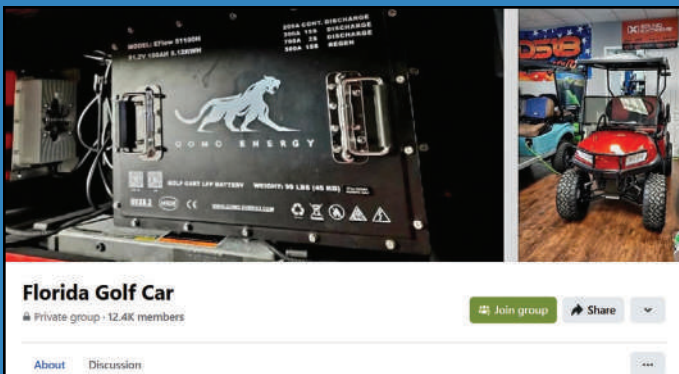
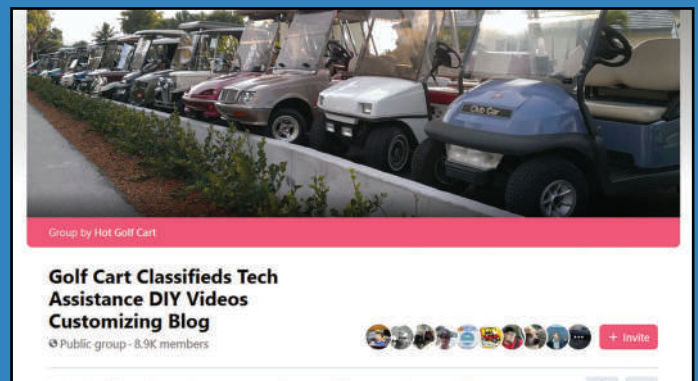
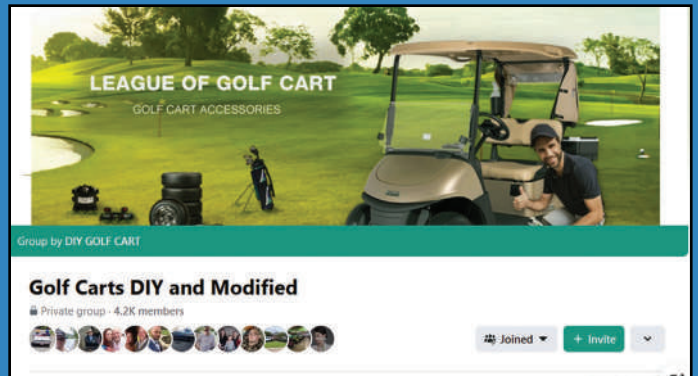
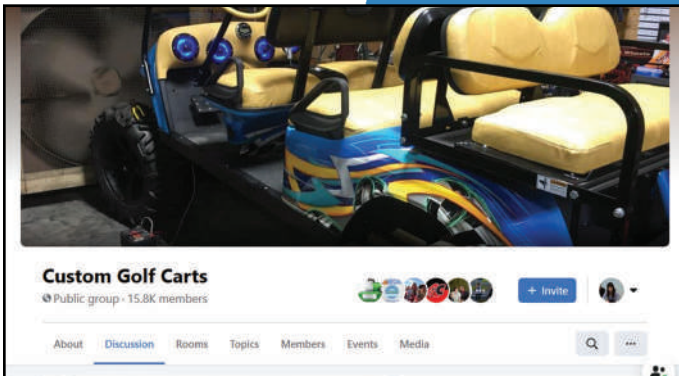
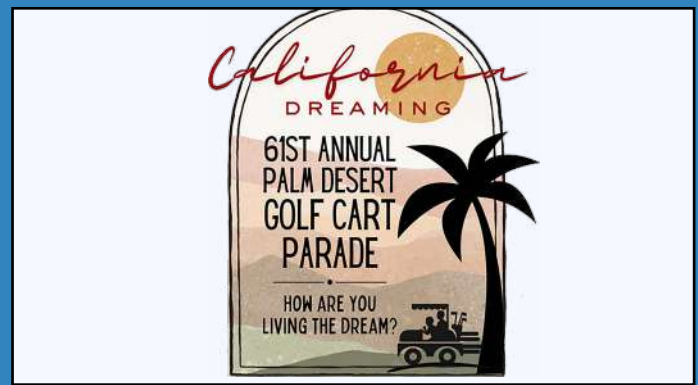


TRACTOR SUPPLY Golf Cart is Actually A MONSTER! It's HUGE!

We were approached by a BRAND NEW golf cart brand RACKA that offered to send us one of their RGC1 carts to share what we think. This cart is PACKED with features and has an impressive amount of power and features for the money. At under \$10,000 this cart will be offered at Tractor Supply only. [Give us your views](#)

▶ WATCH NOW

Golf Cart Groups You SHOULD Be FOLLOWING ON FACEBOOK



Eagle Liberty

Need more seating than a standard golf car?

Proudly built in Augusta, GA, the Eagle Liberty has you covered! Whether you need an oversized bar car for a golf course, a utility bed with storage for resorts and hotels, or simply a high-capacity personnel transport vehicle, this semi-custom PTV can be built to your exact specifications.

Call us today to explore available options and pricing!



General

- **Color:** Any color available!
- **Seats:** Custom seat pattern and colors available
- **Seating Capacity:** 12
- **Speed:** 19 MPH

Dimensions

- **Overall:** (L) 166"x (W) 67"x (H) 80"
- **Wheelbase:** 87"

Electrical

- **Battery:** (2) Navitas 105Ah 76.8V Lithium
- **Motor:** Navitas 5KW AC
- **Controller:** Navitas 600Amp

Helpful Tips

Golf Cart Safety: Essential Practices and Innovations for Owners

Golf cart safety determines whether your daily rides end with smiles or emergency room visits.

Owners across neighborhoods, campgrounds, and private properties rely on their carts for transportation, hauling, and everyday convenience.

A single brake failure at the wrong moment changes everything.

- Worn components go unnoticed until a passenger falls from a moving cart.
- Electrical problems turn a routine trip into a roadside breakdown.



Three situations put golf cart owners at serious risk:

- Brake systems that haven't been inspected in years create stopping distances that exceed safe limits.
- Missing or broken lights leave carts invisible to other vehicles during dawn, dusk, and evening hours.
- Loose steering components cause unpredictable handling on turns and uneven terrain.

This article covers the equipment, maintenance, and practices that keep your golf cart safe.

Understanding golf cart safety fundamentals helps you make informed decisions about upgrades, repairs, and daily operation.

Why Does Golf Cart Safety Matter More Than Ever?

Golf cart injuries send approximately 15,000 people to emergency rooms across the United States every year, according to data tracked by the Consumer Product Safety Commission (CPSC).

The number continues rising as more owners use carts for neighborhood transportation, property maintenance, and commercial applications beyond

traditional recreational use.

Children under 16 account for roughly 31% of all golf cart injuries.

Falls from moving carts and rollovers represent the leading causes of serious harm.

Head and neck injuries occur most frequently, followed by fractures to arms and legs.

How to Improve Golf Cart Safety Today Without Major Upgrades

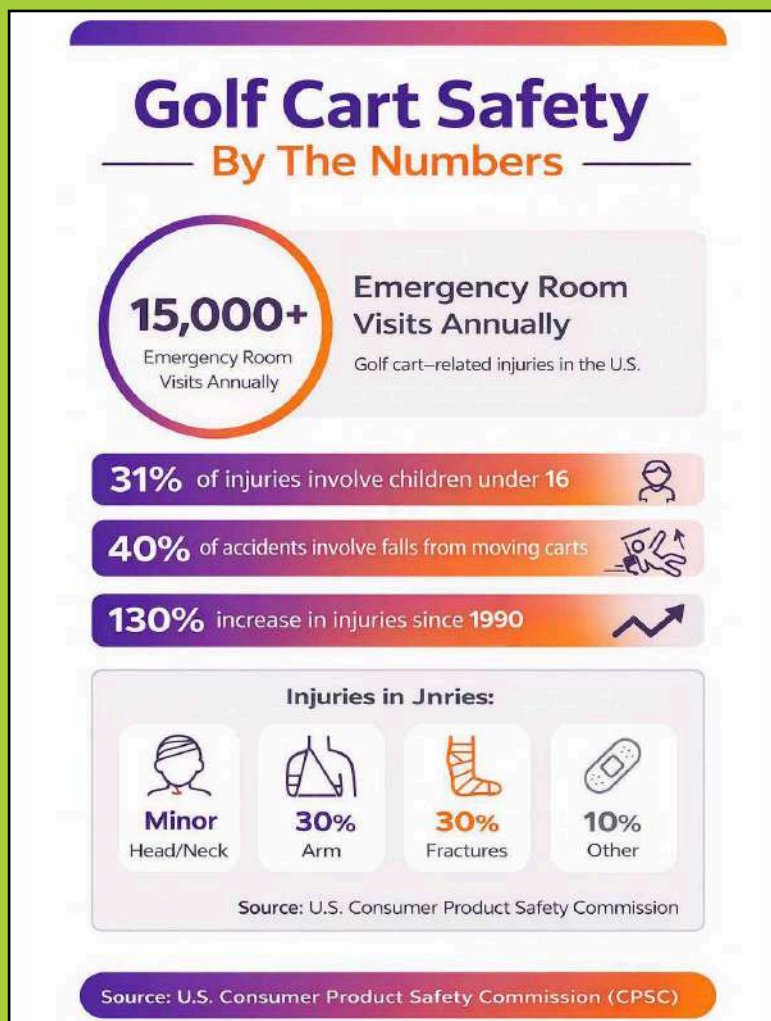
Taking action on safety does not require major investments or complete overhauls.

Simple steps create immediate improvements in how your cart performs and protects passengers.

- Check your brakes this week. Press the brake pedal firmly and note how much travel occurs before resistance builds. Soft or spongy pedals indicate air in the brake lines or worn components that need to be replaced.
- Test all lights before your next ride. Turn on the headlights, activate the turn signals, and have someone confirm brake lights illuminate when you press the pedal. Replace any bulbs that flicker or fail to light.
- Inspect tire condition and pressure. Look for cracks, bulges, or uneven wear patterns that



service, repair & maintenance **TIPS**



How Many Golf Cart Accidents Happen Each Year?

Emergency departments across the United States treat approximately 15,000 golf cart-related injuries annually, according to CPSC surveillance data.

The actual number of incidents runs higher because minor injuries often go unreported or receive treatment outside hospital settings.

Injury rates increased by more than 130% between 1990 and 2006 as golf cart usage expanded beyond traditional recreational settings.

A study published in the American Journal of Preventive Medicine documented nearly 147,000 emergency department visits for injuries sustained during law enforcement encounters over a 16-year period.

Recent data show continued growth in senior injuries, with nonfatal cases among adults aged 65 and older rising substantially from 2004–2017.

Retirement communities, where golf carts serve as the primary mode of



signal alignment problems. Maintain pressure at the PSI rating stamped on tire sidewalls.

- Schedule a professional safety inspection. Annual checkups catch developing problems and verify that all systems meet manufacturer specifications for safe operation.

transportation, account for a disproportionate share of accidents involving older adults.

Children experience traumatic brain injuries at rates more than three times higher than adults in golf cart accidents.

The combination of smaller body size, less developed motor skills, and frequent passenger ejections creates elevated risks for young riders.

Understanding accident frequency and patterns motivates safety investments.

Every improvement to your cart's brakes, lights, and stability features reduces the likelihood of becoming part of these statistics.

What Does Safe Golf Cart Ownership Look Like?

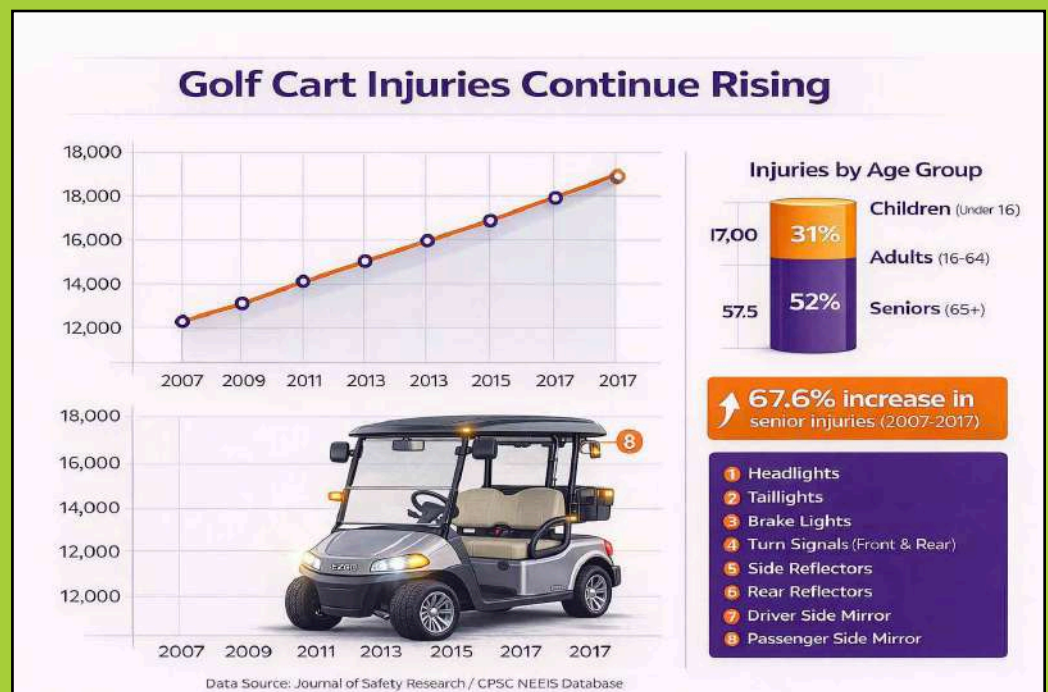
Owners who prioritize safety enjoy their carts without worrying about unexpected failures or preventable accidents.

Regular maintenance, proper equipment, and responsible operation create peace of mind alongside reliable transportation.

Safe ownership means:

- The brakes stop confidently every time you press the pedal.
- Lights illuminate your path and make your cart visible to others.
- Steering responds predictably to your inputs without play or wandering.
- Passengers ride securely in seats designed for their safety.

SOURCE



Around The Industry

Keep up to date with the latest developments in the LSV/ cart world. From new product launches and business expansions to regulatory updates and market trends, we cover it all. Stay informed on the innovations and insights shaping the future of the LSV/golf cart industry.



HAK GOLF

HAK GOLF'S INAUGURAL INNOVATION, DRYDOTS®, FEATURED IN PGA SHOW'S PRESTIGIOUS INVENTORS SPOTLIGHT

ST LOUIS, MO., — Drydots®, the new magnet-based golf accessory that helps keep gloves dry while on the course, will compete for several honors during the 2026 PGA Show's Inventors Spotlight, announced HAK Golf President Joel Andersen.

Drydots will be showcased alongside some of the most innovative golf products at the PGA Show, January 20-23, 2026, in Orlando, FL and will be considered for the coveted "Best-in-Show" and other awards presented by the United Inventors Association.

Inside each Drydot is a powerful rare-earth magnet that sticks firmly to the metal bars of any golf cart. The face of each Drydot features a custom Velcro® surface that holds the

tongue of any golf glove firmly in place at high speed, yet remains easy to pull or peel off. Using Drydots enhances air flow through the glove, speeding up the drying process in between shots. This extends the life of gloves by preventing the hardening that often occurs when gloves are allowed to dry after getting too saturated with sweat.

"Sweaty gloves are a common frustration for golfers, and traditional fixes—stuffing them in a back pocket or wrapping them around cart posts or handles—simply don't work," said Andersen. "Drydots are much more efficient and effective at keeping gloves dry, and we believe they will quickly become a staple accessory in many golfers' bags."

Innovation Meets Customization

Drydots are available in a wide variety of colors and designs, including state, city, and

HAK GOLF

country flags; college and professional team colors; humorous limited-editions celebrating golf culture; and other unique collections.

Drydots can also be customized with a golf course, tournament, or company logo and make for a unique and useful giveaway at scramble tournaments, corporate outings, or any special event. "There's a sea of sameness when it comes to golf-related giveaways and promotional items," said Andersen. "We are establishing a much needed new category with Drydots and believe the level of logo visibility and en-

gagement they offer along with their novelty and usefulness will make them a popular golf giveaway."

PGA Show attendees can find Drydots in the Innovator Showcase and in Booth 3919. For more information about Drydots, please visit www.drydots.com.

About Drydots®:

The concept of Drydots popped into our founder's head on a particularly hot and humid day in the Midwest while fumbling for the "least crusty" glove in his bag on the first

tee. That evening, on the drive home from his local public course, while trying to block out a triple on 16, the idea for Drydots was born.

Inside each Drydot is a powerful rare-earth magnet that sticks firmly to the metal bars of any golf cart. The face of each Drydot features a custom velcro surface that holds the tongue of any golf glove firmly in place at high speed yet remains easy to pull or peel off. Using Drydots enhances air flow through the glove as you drive, speeding up the drying process in between shots or holes. Drydots also helps extend the life of gloves by preventing the hardening or "crusting" that occurs when gloves are allowed to dry after getting too saturated with sweat.

About HAK Golf

HAK Golf is committed to developing practical, innovative golf accessories that enhance the player experience. From magnetic glove holders to other novel solutions, HAK Golf products blend functionality with thoughtful design to support golfers at every level. The company's inaugural product, Drydots, will be followed by a slate of additional products to be launched later in 2026 and beyond.

SOURCE

BIRDIE BALOU

BIRDIE BALOU PARTNERS WITH REPSARK TO SCALE WHOLESALE GROWTH AND REACH NEW RETAILERS NATIONWIDE

(Keller, TX & Anaheim, CA) – Birdie Balou, a lifestyle accessories brand creating fun and functional pieces designed for life in motion, has officially partnered with RepSpark to accelerate its wholesale expansion and streamline operations.

Through this collaboration, Birdie Balou will leverage RepSpark's B2B eCommerce plat-

form to connect with a broader network of golf shops, resorts, and specialty retailers.

The partnership allows the brand to transition from manual processes to a digital-first wholesale strategy, ensuring its fun and functional designs reach active women wherever they shop.

"As our business grew, we found it increasingly difficult to find sales representatives in certain regions within the U.S.," said Sheilagh Wilson, Founder of Birdie Balou. "After con-

BIRDIE BALOU - CONTINUED

sidering RepSpark in the past, we decided this year was the right time to come on board and the impact was immediate! Within the first week of our soft launch, we began receiving access requests from buyers, quickly and seamlessly creating valuable new leads and connections. The platform is easy to navigate, and RepSpark has quickly become a tool we see as a meaningful asset to our continued growth."

Birdie Balou offers a thoughtfully curated collection of accessories designed to balance style, organization, and everyday practicality.

Known for its best-selling Golf Cart Seat Covers, Sporty Totes, and Insulated Bags, the brand creates pieces that move seamlessly from the course to the office to a weekend getaway.

Proudly women-owned and based in Texas, Birdie Balou's design philosophy starts with function and finishes with personality. Each piece features bold colors, playful prints, and durable, easy-care materials that fit seamlessly into real-life moments.

Whether heading to the golf course, tennis court, the pickleball court, or a beach resort, Birdie Balou delivers versatile gear designed for a life well played.

Why RepSpark?

Birdie Balou selected RepSpark for its reputation as the leading wholesale platform in the golf industry. By integrating RepSpark's robust tools, the brand strengthens its ability to self-serve orders and manage retailer relationships 24/7. Through RepSpark, Birdie Balou gains:

- Real-time inventory visibility to ensure accurate stock levels for buyers.
- Streamlined wholesale ordering through digital catalogs and line sheets.

- Custom product assortments tailored to specific retail locations.
- Advanced sales insights to monitor performance and identify growth opportunities.
- RepSpark Community access to get discovered by new retailers and build brand awareness.

"What excites us about Birdie Balou is how they've successfully injected personality into functional sport and resort accessories," said Meghann Butcher, CEO of RepSpark. "Sheilah and her team have built a brand that truly understands the 'on-the-go' lifestyle of the modern woman. RepSpark's platform is designed to amplify that story, making it easier for their vibrant collections to reach the right retailers and players globally".

About Birdie Balou

Birdie Balou designs fun, functional accessories created to move seamlessly through an active, everyday lifestyle. Blending performance with personality, the brand is known for vibrant designs, smart details, and high-quality, easy-care materials. From Sporty Totes to Golf Cart Seat Covers, Birdie Balou supports life in motion without sacrificing style. Learn more at birdiebalou.com.

About RepSpark Systems

RepSpark is the leading provider of digital solutions for B2B wholesale commerce. Designed to be personalized, intuitive, and powerfully intelligent, RepSpark's platform drives brands to connect and collaborate with their buyers to place orders, create digital line sheets, and analyze key data 24/7. RepSpark brands leverage technology to drive sales growth and better serve their retailers. Founded in 2007, RepSpark is headquartered in Anaheim, CA. To join the RepSpark Community, create an account at app.repspark.com, and for more information, visit www.repspark.com.

SOURCE

VIPBOSS LITHIUM BATTERY SYSTEMS

VIPBOSS LITHIUM BATTERY SYSTEMS POWER GOLF CARTS AS ESSENTIAL COMMUNITY MOBILITY DURING HOLIDAY PEAK PERIODS

NEW YORK, Jan. 6, 2026 /PRNews-wire/ -- No longer confined to leisure, these vehicles now underpin daily operations. At the core of their reliability lies a stable power source. Vipboss' lithium battery solutions deliver consistent, dependable energy to keep services running smoothly, whether during peak holiday activity or everyday routines, ensuring communities remain connected and efficient.

To address diverse operational needs, the Vipboss Lithium Golf Cart Battery Conversion Kit is offered in four configurations: 48V 150Ah, 48V 105Ah, 36V 150Ah, and 36V 105Ah. This lineup allows fleet operators and individual users to match battery voltage, range expectations, and installation requirements to their specific cart platforms.

The 150Ah models are engineered for extended performance, delivering up to 70 miles per charge and reducing the need for frequent recharging—an advantage for carts in continuous or high-demand use. The 105Ah models provide up to 50 miles per charge in a more compact and cost-efficient form, comfortably supporting a full day of operation or a complete 18-hole round. While the 48V versions are optimized for higher-voltage systems commonly found in modern golf carts, the 36V options are tailored for carts built on 36V architectures, with dimensions adapted for easier integration within each voltage class.

Across all four configurations, Vipboss applies a unified performance and design standard. Each battery is approximately one-third the weight of comparable lead-acid alternatives, significantly reducing vehicle load to improve energy efficiency, handling, and responsive-

ness. All models support 200A continuous discharge and high peak current output, ensuring stable and reliable power during start-up, uphill driving, or heavy-duty operation. An external LED display, combined with built-in Bluetooth monitoring, provides real-time visibility into battery status, charge and discharge activity, and overall health through a mobile application. The system also supports parallel expansion of up to four batteries, enabling scalable capacity and extended range as operational needs evolve.

Durability is a core consideration in design. Each battery is enclosed in a full metal, impact- and wear-resistant housing, engineered to perform reliably in demanding environments. Compatibility extends beyond major golf cart brands such as Club Car, E-Z-GO, and Yamaha, with applications that also include home energy storage, off-grid and solar systems, and marine use.

As golf carts continue to expand their role in community and public-service settings, the battery systems that power them are increasingly recognized as an "invisible infrastructure" supporting daily life. By offering stable, durable, and cold-resistant lithium battery solutions, Vipboss supports communities to sustain mobility and essential services when reliability matters most.

About Vipboss

Vipboss is a specialist in the lithium battery industry, focusing on the research, production, and manufacturing of lithium iron phosphate (LiFePO₄) batteries. The company is committed to advancing battery technology with an emphasis on reliable performance, safety, and extended service life. Its mission is to deliver safe, efficient, and environmentally responsible energy solutions that contribute to a cleaner, more sustainable future.

For more information, please visit: <https://vipbosspower.com/>.

MID-ATLANTIC GOLF CARS

MID-ATLANTIC GOLF CARS ACQUISITION ANNOUNCEMENT

On January 5, 2026, Vic Gerard Golf Cars, a leading distributor of Club Car fleet golf cars and utility vehicles in Farmingdale, New Jersey, announced the acquisition of Golf Cars, Inc. of Doylestown, PA. This acquisition will combine the long history of Vic Gerard Golf Cars established in 1956 and Golf Cars, Inc. founded in 1972. The two companies will operate as Mid-Atlantic Golf Cars, LLC. The transaction is effective January 1, 2026, and financial terms were not disclosed.

their existing locations in Doylestown, PA and Farmingdale, NJ. All customers can expect excellent sales and service to continue.

Since 1956, Vic Gerard Golf Cars has been a Club Car Distributor, providing golf fleet, turf utility vehicle, commercial utility vehicle, and consumer/low speed vehicle sales in New Jersey. In addition to sales, the company provides a large selection of OEM and non-OEM parts, full-service department, and a large fleet of rental cars for golf and non-golf rental events.

Golf Cars, Inc. has been a Club Car Distributor since 1972, providing golf fleet, turf utility vehicle, commercial utility vehicle, and consumer vehicle sales in Pennsylvania, New Jersey, and Delaware. The company also has a parts department, full-service team, and rental cars for a variety of golf and non-golf related occasions.

"This is an exciting time for both companies as we combine years of quality service, support, and sales experience for the Tri-State area" said Chief Executive Officer, Bill Miller. The new Mid-Atlantic Golf Cars will operate at

BINTELLI

BINTELLI™ ANNOUNCES THE LAUNCH OF SIVO AND THE NEW SIVO EDGE ELECTRIC GOLF CART LINE-UP

CHARLESTON, SC — Bintelli, a long-standing leader in the electric golf cart industry, is proud to introduce Sivo, Powered by Bintelli, the newest brand in its expanding lineup. The launch of Sivo begins with the debut of the Sivo Edge, a modern and design-forward electric street-legal golf cart that brings a fresh look, smooth performance, and a range of new enhancements created for today's drivers. With this addition, Bintelli now offers one of the most complete

and wide-ranging selections of street-legal golf carts in the industry.

For more than twenty-five years, Bintelli has focused on building premium electric golf carts known for quality, reliability, and long-lasting value. Supported by proven customer service, the company's six-time Inc. 5000 recognition, two years running voted Best Golf Cart Brand and Best LSV by consumers, Sivo continues this tradition while introducing an even more innovative and modern identity shaped around the needs of current EV customers.

The Sivo Edge features clean

styling, easy drivability, and thoughtful engineering throughout. It also incorporates several new improvements that elevate comfort, convenience, and everyday usability, such as in-dash-board cooling vents, full vehicle LED color-changing lights, front trunk storage and adjustable steering. From upgraded technology to refined driving characteristics, the Edge brings a more advanced and modern experience to the electric golf cart category without losing the simplicity and support that customers appreciate.

"Class leading functionality, thoughtful design and a

BINTELLI - CONTINUED

premium feel were keystones on the Sivo Edge project from day one. We knew we wanted to push ourselves from a feature standpoint, whether it be the premium seating, adjustable tilt steering wheel or the first of its kind dashboard fan system with automotive style vents. Driving innovation as the industry leader is engrained in all we do at Bintelli and it's

evident throughout the all-new Sivo Edge."- Jason Perske VP Bintelli

The addition of Sivo now gives Bintelli a three-brand structure that allows the company to support a wide range of customers and dealer partners.

- Bintelli remains the flag-

ship brand with well-known neighborhood models including the Beyond and Nexus.

- ActivEV, Powered by Bintelli, offers a modern, lifestyle-centered lineup designed for families, outdoor explorers, and everyday neighborhood use at a slightly lower starting MSRP.
- Sivo, Powered by Bintelli, introduces a fresh, design-centered collection for customers who want updated styling, new innovations, and a stand-out automotive-inspired dashboard.

Together, these three brands give Bintelli a versatile and well-rounded family of products that reaches lifestyle buyers, families, and customers looking for easy and enjoyable ways to get around. This structure offers dealers a wider range of options and

reinforces Bintelli's continued growth across the country. The Sivo Edge marks the start of this new chapter. The vehicle's blend of style, comfort, and features gives customers more of what they want in a modern golf cart.

The launch of Sivo reflects the company's ongoing commitment to offering more choices and more ways for customers to move with comfort and confidence. With three distinct brands working together, Bintelli is prepared to meet the needs of an expanding market and continue its long record of dependable growth.

The Sivo Edge is now available to new dealers, with open territories in every state. Additional images, specifications, and dealer information can be found at sivogolfcarts.com.

GOLF CARTING EXPO

GOLFCARTING EXPO 2026 ANNOUNCED FOR OCTOBER 1-3 IN CHARLESTON, SC

CHARLESTON, SC / ACCESS Newswire / January 13, 2026 / Organizers of the GolfCarting Expo today announced the dates for the second annual GolfCarting Expo & Dealer Summit, the industry's first dedicated annual event showcasing innovative products, services, and companies while providing education for

golf cart dealers. The three-day event will take place October 1-3, 2026, in Charleston, South Carolina.

The event represents a significant milestone for the golf cart industry, bringing together manufacturers, dealers, distributors, and consumers. Attendees will have the opportunity to explore the latest innovations in golf cart technology, accessories, and services, while participating

in educational and hands-on technical sessions designed to enhance industry knowledge and best practices.

"This expo fills a critical gap in the golf carting industry," said Christian Amico, CEO and Co-Founder of GCMedia Group & GCEvents. "It provides a platform where innovation meets education for manufacturers, dealers, and enthusiasts alike."

GOLF CARTING EXPO = CONTINUED

Event Highlights

The GolfCarting Expo & Dealer Summit will feature:

- Over 75,000 square feet of exhibit space showcasing the latest golf cart models, accessories, and technology
- Educational and hands-on technical seminars led by industry experts
- Networking opportunities for dealers, distributors, and manufacturers
- Interactive product demonstrations and test drives

Charleston was selected as the host city again for its strong tourism infrastructure, central East Coast location, and growing reputation as a destination for trade shows and conventions.

Registration, exhibitor opportunities, and event updates are available at www.GolfCartingExpo.com.

About GolfCarting Expo

The GolfCarting Expo & Dealer Summit is the industry's first dedicated annual event focused exclusively on the golf cart industry. The Expo brings together manufacturers, dealers, distributors, and consumers to showcase innovation, share knowledge, and advance the industry.

KANDI TECHNOLOGIES

KANDI TECHNOLOGIES SHOWCASES AT AIMEXPO 2026, DEEPENING NORTH AMERICAN CHANNEL STRATEGY AND BUSINESS EXPANSION

Jinhua, China , Jan. 13, 2026 (GLOBE NEWSWIRE) -- Kandi Technologies Group, Inc. ("Kandi", "Kandi Technologies", or the "Company") (NASDAQ GS: KNDI), a long renowned leader in all-electric personal transportation and utility vehicles, today announced its participation in American International Motorcycle Expo ("AIMExpo") for the year 2026, held from January 7 to 9, 2026 at the Anaheim Convention Center in California. During the event, Kandi showcased its core lineup of electric off-road

vehicle products tailored for the North American market and engaged in strategic discussions with existing dealers and prospective channel partners. Through on-site product demonstrations and targeted business meetings, the Company further strengthened its channel network and explored new collaboration opportunities to drive continued market expansion.

As one of the most influential trade shows in the North American powersports industry, AIMExpo brings together global leading manufacturers, distributors, and industry professionals. Kandi highlighted several flagship products at the event, including crossover electric golf carts such as the Element 2+2, 4Pro F, and 6Pro 4+2, as well as

electric UTV models from the Cowboy and Innovator series. Designed to address diverse applications — from community mobility and agricultural operations to outdoor recreation — these vehicles demonstrate Kandi's market readiness, engineering expertise, and deep understanding of end-user needs in North America.

Mr. Feng Chen, CEO of Kandi, commented: "North America remains one of the core strategic markets for our electric off-road vehicle business. By consistently participating in leading industry events like AIMExpo, we are able to strengthen collaboration with channel partners, sharpen our market insights, and ensure our products optimally align with our distribution

KANDI TECHNOLOGIES - CONTINUED

network. This event not only reinforced our existing partnerships but also created new avenues for future growth. Looking ahead, we remain focused on the North American market, steadily advancing product evolution, channel development, and localized operations to support sustainable long-term growth.”

Over the years, Kandi has invested continuously to establish a comprehensive localized operational ecosystem in North America, spanning product development, manufacturing, supply chain

management, and channel operations. The Company maintains a production facility and multiple distribution centers in the United States, allowing it to optimize its product mix and channel strategy based on local market needs. The successful participation in AIMExpo 2026 is expected to further enhance Kandi’s industry visibility within the North American powersports and off-road vehicle sectors, supporting the Company’s long-term business development.

About Kandi Technologies Group, Inc.

Kandi Technologies Group, Inc. (NASDAQ GS: KNDI) is a leader in the research, de-

velopment, and manufacturing of all-electric personal transportation and utility vehicles. Headquartered in Jinhua, China, the Company’s primary focus is on off-road mobility solutions, with a strategic emphasis for the North American market, while actively pursuing opportunities in other related emerging high-tech areas. Through its subsidiaries, Kandi Technologies leverages its robust manufacturing capabilities and technological expertise to deliver innovative products for a wide range of commercial and consumer applications.

For more information, please visit ir.kandigroup.com

SIMOLO CUSTOMS LTD.

WINTER 2025-2026 UPDATE

The SC1 skateboard chassis is the foundation of our next-generation Lifestyle Vehicles. Designed as a true LSV platform—not an adapted cart frame—it integrates the core systems that matter most: battery, drivetrain, suspension, and structure, all engineered to deliver consistency, durability, and scalability

as we grow.

As development progresses, we’ve made a deliberate decision to eliminate as much traditional welding as possible. This is not only critical for manufacturing scalability, but also a superior engineering solution. By adopting riveting and structural bonding, we’re leveraging processes proven for decades in the

aerospace sector and now widely used in the supercar industry. The result is tighter tolerances, improved load distribution, reduced heat distortion, and a more repeatable, high-quality build.

We are currently hard at work on our first SC1 prototype, validating structure, processes, and assembly methods that will carry through to production.



AN UPDATE ON
**THE SC1
SKATEBOARD CHASSIS**

WINTERS RECREATION

WINTERS RECREATION ANNOUNCED AS NEW AUTHORIZED YAMAHA GOLF-CAR DEALER

Winters Recreation is proud to announce its official designation as an Authorized Yamaha Golf-Car Dealer, expanding its lineup to include Yamaha's industry-leading golf, utility, and specialty vehicles. This partnership enhances Winters Recreation's longstanding commitment to providing highquality vehicles, parts availability and toptier customer service.

About Yamaha GolfCar Company

The Yamaha Golf-Car Company builds from the 60plusyear legacy of the Yamaha brand to manufacture the most innovatively engineered and highestquality golf, utility, and specialty vehicles in the golf industry.

Yamaha has led the industry with several major firsts, including:

- The first golf car with Electronic Fuel Injection (EFI), delivering the best gas mileage and smallest carbon footprint.
- The first golf car with fully independent fourwheel suspension, producing the smoothest ride in the game.
- The first gas-powered golf car engineered to be nearly as quiet as an electric model.

About Winters Recreation

Winters Recreation, located in Sauk Centre, Minnesota, is one of the Midwest's largest and most respected golf cart dealerships and customization specialists. Established in 2000, the company has grown into a premier destination for new and used golf carts, utility

vehicles parts and service, while still offering outdoor power equipment and snowmobiles.

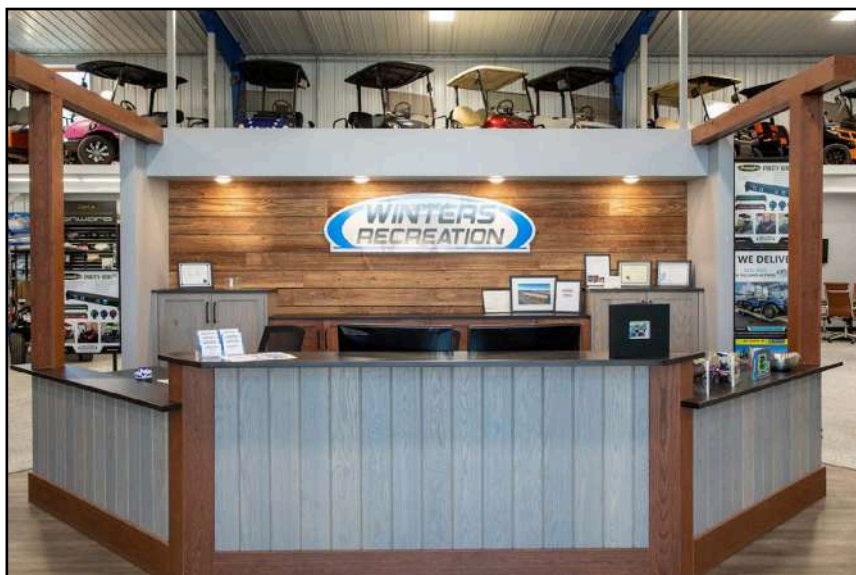
Winters Recreation will lead a team of certified technicians delivering highquality service, repair, and customer-first craftsmanship. With over 25 years of customer satisfaction and industry expertise, Winters Recreation has earned a reputation for golf cart selection, product knowledge, friendly service, and a passion for helping customers find their perfect machine.

A Powerful New Partnership

As an Authorized Yamaha Golf-Car Dealer, Winters Recreation will now offer:

- The full lineup of Yamaha Drive2 gas and electric models
- Yamaha's industry-leading EFI technology
- Yamaha's powerful utility vehicle line up
- Genuine parts, certified service, and factory-backed warranties

Winters Recreation
39204 County Road 186
Sauk Centre, MN 56378
www.wintersrec.com
320.351.7533



MAGAZINE advertising WORKS



- Magazines rank 31 out of all 16 media in terms of giving consumers a positive impression of advertising.
- The degree to which readers recall ads in magazines has increased by 6 percent in the last five years.
- The number of readers who took action after viewing a specific ad has increased by 10 percent in the five years.
- Fifty-six percent of readers took action as a result of viewing a magazine ad.

*Sources: Yankelovich; Affinity's VISTA Print Effectiveness Rating Service (2 and 3); VISTA Norms and Starch Adnorms

Magazines create relationships, which in turn increase sales. Shouldn't you be part of this equation?

Golf Car Options • www.golfcaroptions.com • info@golfcaroptions.com

GolfCartDog.com



K9 CoPilot & "K9Caddy"

Safety Leash Systems
for Golf Carts & ATVs

\$10 OFF! USE CODE: K9C

the "Complete" Golf Cart Dog K9Caddy Assembly"



www.VegasGolfTheGame.com



Discover Your EV Charging Profit



More Electric Golf Cars/LSV/EVs mean more customers and more revenue for your business. With Energy5's turnkey solutions, we take care of installation, operation, and maintenance, so you can focus on your business.

Wondering about EV Charging revenue for your business?
With Energy5, from setup to software, we've got you covered in the #EV journey.

Try our EV Charging Earnings Calculator now
<https://energy5.com/evcharging/ev-calculator>

MANUFACTURERS

Are you a golf cart manufacturer and would like to be listed? Contact us at info@golfcaroptions.com

Manufacturer	Website
American Custom Golf Cars	acgcars.us
Advanced EV	advancedevusa.com
Aetric NEV	hahmev.com
AGT Electric Cars	agtecars.com
Alset EV	alset-ev.com
American Landmaster	americanlandmaster.com
Arcimoto Electric Vehicles	arcimoto.com
Atlas Carts	atlas carts.com
Atomic Electric Vehicles	atomicelectricvehicles.com
Ayro	ayro.com
Beast 48	beast48.com
Bremark EV	bremarkev.com
Bintelli Electric Vehicles	bintellielectricvehicles.com
Breezy EV	breezyev.com
Caddyshack Golf Carts	caddyshack1.com
Cazador Motorsports	cazadormotorsports.com
Club Car	clubcar.com
Conquest Carts	conquestcarts.com
Cricket Mini Golf Carts	cricketminigolfcarts.com
Cruise Car	cruisecarinc.com
Denago EV	denagoev.com
Drake Golf	drakegolfcarts.co.za
Dr Golf Carts	drgolfcarts.com
Dynamic Carts	dynamiccarts.com
Eagle Products	eagleproducts.us
Ellwee	ellwee.com
eNVy	envygolfcart.com
Epic Carts	epiccarts.com
EV Titan	evtitan.com
Evolution Electric Vehicles	evolutionelectricvehicle.com
E-Z-GO Textron	ezgo.txtsv.com
Garia	garia.com
GEM by Waev	gemcar.com
Getgo	getgo.net.ph
Goggo USA	goggocar.com
Green Machine Carts	greenmachinecarts.com
Honor LSV	honorlsv.com

Manufacturer	Website
HuntVE	huntve.com
Icon Electric Vehicles	iconev.com
Inno Golf Carts	innogolfcarts.com
Iron Bull Carts	ironbullcart.com
Italcar Electric Vehicles	italcar.com
Kandi America	kandipowersports.com
Kodiak EV	drivekodiak.com
Legion EV	legionev.com
MadJax	madjax.com
MammothEV	mammothev.com
MaxxIt Motors	maxxitmotors.com
MD Carts	md-carts.com
Mobi G	mobigolfcart.com
Moke	mokeamerica.com
Momentum Motorwerks	momentummotorwerks.com
My Electric Vehicle	myelectricvehicle.org
Neo EV	neoev.com
Olympus LSV	olympuslsv.com
PilotCar EV	pilotcarev.com
Quickie Carts	quickiecart.com
Roxie Carts	roxiecarts.com
Royal EV	royal-ev.com
Sierra LSV	sierralsv.com
Simolo Customs Ltd.	simolocustoms.com
Spartan EV	spartanev.com
Spree Golf Car	spreegc.com
Star EV	starev.com
Streetrod Golf Cars	streetrodgolfcars.com
Sunday Carts	sundaycarts.com
Sune Carts	sunecarts.com
Titan EV	titanevusa.com
Tomberlin USA	tomberlinusa.com
Trojan EV	trojanev.com
United Smart EV	unitedsmarteve.com
Vantage Tag	vantage-tag.com/products
V Carts	vcarts.com
Venom EV	venom-ev.com
Viking EV	viking-ev.com
Viper Cart USA	vipercartusa.com
Vivid Ev	vivid-ev.com
Voyager Electric Vehicles	voyagerelectricvehicles.com
Yamaha Golf Car	yamahagolfcar.com
Ziggy Wheels	ziggywheels.com

classified/ads

JasonsGolfCarts.com
Best Selection/Best Prices

SHOP NOW ►



Daren Anderson
FOUNDER

910-724-3412
Daren@andersongolideas.com
PO Box 4586
800 St. Andrews Dr. Suite 221
Pinehurst, NC 28374



GREAT DAY, INC
MAKING IT BETTER™

Ilar Paul Meeks
President

ipmeeks@greatdayinc.com
(318) 574-5003 ext131
Toll Free: 1-866-649-1918
Cell: (601) 630-7792
www.GreatDayInc.com
604 Kimbrough Dr. Tallulah, LA 71282

CONVERTED CARS
You Deserve to Look Good in Your Golf Cart!
www.ConvertedCarts.com

BUILD YOUR GOLF CART SOFTWARE

Mark Haugstad
owner

612-584-0233
mark@buildyourgolfcart.com
www.buildyourgolfcart.com



BYCC Software Web App - Lead Generating Tool
Website Development | Web Maintenance
Web Hosting & SSL | Website Health Reports
Search Engine Optimization

GolfCartDog.com

"K9Caddy"
Safety Leash System
&
K9 CoPilot
Seat Restraint System

Pet Safety Options for Golf Carts & ATVs




by M3b-LLC

Golf Cart Chronicles - Books 1, 2 & 3 Available on Amazon



GOLF CAR GRAPHICS .COM

THE LEADER IN GOLF CAR RESTYLING PRODUCTS



To place a \$25/month ad contact info@golfcaroptions.com

FROM CONCEPT TO COMPLETION, *Suite Seats* HAVE THE
Fastest **DELIVERY TIMES**




IN THE INDUSTRY

MOST CUSTOM ORDERS SHIP IN **10 DAYS OR LESS!**
TIME IS MONEY, HOW MUCH ARE YOU SPENDING ON YOUR CUSTOM SEATS?




Suite Seats[®]
CUSTOM GOLF CAR SEATS

SCAN HERE 



2009 N BROADWAY, NEW ULM MN 56073 • 507.359.2277 • UCUINC.COM

TOGETHER, WE'RE DRIVING THE FUTURE OF LOW-SPEED MOBILITY

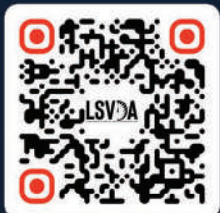
UNITING DEALERS, MANUFACTURERS, AND INNOVATORS THROUGH
EDUCATION, PUBLIC POLICY & MARKET GROWTH

EMPOWERING DEALERS

- PUBLIC POLICY REPRESENTATION
- SAFETY AND TRAINING STANDARDS
- "DRIVING FORWARD" NEWSLETTER
- EXPERT MARKET GROWTH GUIDANCE
- RECOGNITION: LSVDA LOGO USE
- WEBINARS AND LUNCH & LEARNS
- SPONSOR PROMOTIONS
- NETWORKING OPPORTUNITIES
- SURVEYS AND BENCHMARKS

ELEVATING SPONSORS

- VISIBILITY & BRAND CREDIBILITY
- POLICY & ADVOCACY ALIGNMENT
- LEAD GENERATION & ACCESS
- THOUGHT LEADERSHIP & EDUCATION
- MARKET INTELLIGENCE
- CROSS-CHANNEL INTEGRATION
- COMMUNITY & DEALER ENGAGEMENT
- INFLUENCE THROUGH ALIGNMENT
- MEASUREMENT & ROI REPORTING



SCAN TO JOIN

OR VISIT WWW.LSVDA.COM

LOW SPEED VEHICLE DEALER ASSOCIATION

